

# DeHart Community Park

## WHAT WE HEARD CONSULTATION REPORT

January 2023



**BENCH**

Document prepared by EcoPlan



## Contents

<i>About This Report .....</i>	<i>3</i>
<i>Overarching Themes .....</i>	<i>3</i>
<i>Consultation Process .....</i>	<i>4</i>
Approach .....	4
Advertising.....	4
<i>Who Participated? .....</i>	<i>6</i>
Onsite Walkshops .....	6
Online Workshops.....	6
Online Survey .....	7
<i>Onsite Walkshop Summary .....</i>	<i>8</i>
<i>Online Workshop Summary .....</i>	<i>10</i>
<i>Online Survey Summary.....</i>	<i>11</i>
<i>Appendices .....</i>	<i>14</i>
Appendix A: Onsite Walkshop Detailed Responses.....	15
Appendix B: Online Workshop Detailed Responses .....	23
Appendix C: Online Workshop Locational Responses .....	27
Appendix D: Online Survey Detailed Responses.....	28

## About This Report

The City of Kelowna is updating the schematic design for DeHart Community Park and has engaged with community members during the planning process to gather resident feedback on priorities for amenities and features in order to update the park schematic design. The City has funding to develop the park and wishes to ensure the plan fits the needs of residents in the Mission neighbourhood and the City of Kelowna, before proceeding with construction in 2023/2024.

The following report summarizes the DeHart Community Park community consultation which took place in Fall 2022. During this engagement process, the City heard from 477 residents through an online survey, three in-person walking workshops, and an online workshop.

## Overarching Themes

Based on analysis of comments received through community consultation, the following noteworthy themes emerged. These general findings are followed by more detailed results in the report.

- **Preservation of natural elements:** There is a strong desire to maintain the features of the park and preserve as much of the existing tree coverage as possible. Participants shared their appreciation for the shade and canopy cover provided by the mature vegetation and a desire to retain as much of the existing vegetation as possible when developing park amenities.
- **Diversity of uses:** Residents use DeHart Community Park for a variety of activities, including walking, dog walking, gardening, and cycling. In addition to maintaining existing park activities, many residents expressed a desire to include more recreational amenities (e.g., multi-purpose courts, play structure, skateboard park, water park) that reflect the diversity of ages and abilities in the Lower Mission neighbourhood: families, children, teens, and seniors.
- **Community space:** Many residents currently use DeHart Park as a community space. Participants shared their appreciation for the community garden and opportunities to connect with neighbours in the park. There is a desire to maintain the existing community connectivity and provide amenities to support gathering (e.g., covered space and seating, picnic area, resting benches).
- **Access and safety:** Community members shared a desire to improve access and safety to and in the park. In order to ensure DeHart Park is safe and accessible, participants expressed support for amenities including, lighting, safe pedestrian sidewalks, road



crossings and pathway connections on all sides. Participants also requested bike racks and safe vehicle parking spaces on DeHart Road.

- **Noise:** Resident feedback highlighted the need to consider noise impacts in the placement of amenities. As DeHart Community Park is located at the intersection of major roads, participants shared a desire to ensure that amenities are positioned to minimize the effects of traffic noise (e.g., picnic benches and covered space in less noisy areas). Community members also expressed a desire to have future amenities consider noise and interface of uses with the surrounding residential neighbours (e.g., less noisy activities close to neighbouring homes).

## Consultation Process

### Approach

The consultation approach used in-person onsite park walking workshops (walkshops), an online workshop, and an online survey to gather community input on park programming priorities that will help inform updating the schematic design.

Participants met the project team at the park and joined a 90-minute site walk that stopped at eight locations in the park to discuss development considerations and opportunities. The walkshops were led by the Project Manager, City of Kelowna Parks and Buildings Planning, and design consultants, BENCH Site Design and Matthew Thomson Design. After the walk around the park, participants were asked to fill in a paper survey form and add to an aerial map of the park, indicating features and amenities they wished to see in future development.

The online workshop was offered on Zoom and included a project summary presentation, orientation to the park context, considerations, and opportunities. Online engagement used Mentimeter for polling and Mural for map-oriented input. The online workshop was hosted by EcoPlan with City of Kelowna Parks and Buildings Planning and BENCH Site Design.

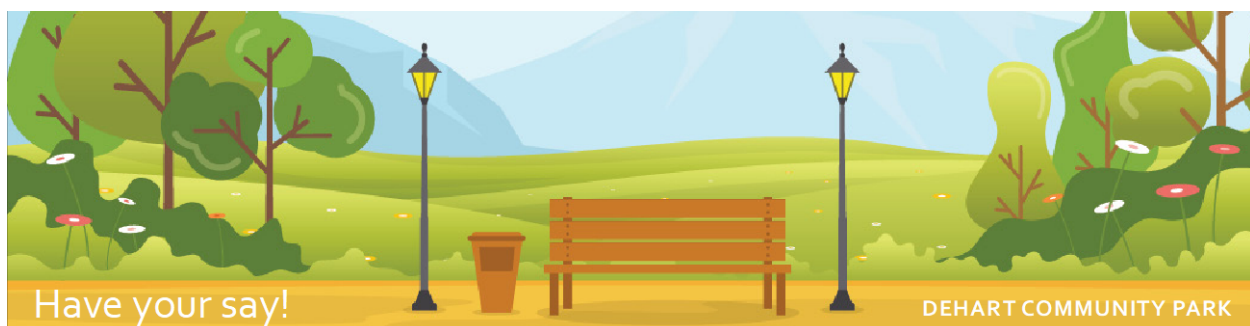
The online survey was hosted on the Get Involved Kelowna project page from October 18 to November 20, 2022, and had 400 responses.

### Advertising

Public consultation advertising included:

- **Get Involved Kelowna** is the City's public engagement platform for a wide range of projects. DeHart Community Park project page was launched on October 18, 2022. Background information on the park, project timeline, relevant documents, online survey, and engagement opportunities were posted on this page: [getinvolved.kelowna.ca/dehartpark](https://getinvolved.kelowna.ca/dehartpark).

- **Get Involved Project page** provided registration information and links for three in-person park workshops and an online workshop. This project page also hosted an online survey and map tool to receive input.
- **Mailer notices** were sent to residents within a one-kilometer radius of the park property (see below).
- **Three coroplast and two vinyl signs** with the webpage URL were posted on the site perimeter fence, around existing park entrances. The vinyl posters will remain into 2023.
- **City of Kelowna Communications** staff advertised the project and events using existing media channels, including a variety of City social media and newsletter. The City's Facebook and Instagram provided two targeted campaigns that reached ~10,000 viewers. A week-long digital ad on Castanet.net was aired and received 378 clicks.
- **Project Manager sent personal email and letters** to known DeHart Community Park stakeholder groups including Okanagan Mission Tennis Club; Okanagan Mission Community Hall Association; Central Okanagan Community Gardens Society; Lower Mission neighbouring schools (Anne McClymont Elementary, Bellevue Creek Elementary, Okanagan Mission Secondary, Dorothea Walker Elementary); Okanagan Mission Lions Club.



DeHart Community Park is envisioned as a vibrant focal point in the Lower Mission neighbourhood, and preliminary planning and public consultation is currently underway. An online survey, in-person workshops, and online workshops are being offered for residents to contribute in updating the schematic design.

Share your park priorities by participating in the opportunities below. Thank you!

Park Walkshops			Online Workshops			Online Survey
Tuesday	Nov. 1	4:30 - 6 pm	Tuesday	Nov. 8	12 - 1:30 pm	October 17 - November 20 <a href="https://getinvolved.kelowna.ca">getinvolved.kelowna.ca</a> 
Wednesday	Nov. 2	9 - 10:30 am	Thursday	Nov. 10	6 - 7:30 pm	
Wednesday	Nov. 2	12 - 1:30 pm	Tuesday	Nov. 15	9 - 10:30 am	
						*Registration required for all opportunities

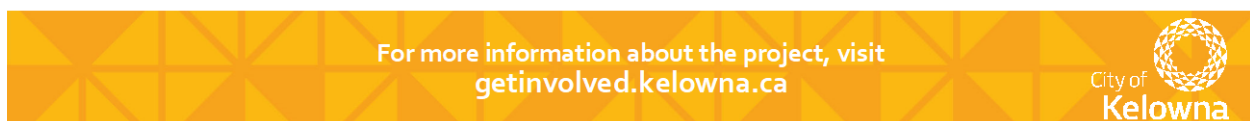


Image: Side one of notice sent by mail to residents within one kilometer of the park.

## Who Participated?

Overall, 477 people participated in the consultation to share what they currently appreciate about the park and features/amenities they wish to see in future.

### Onsite Walkshops

**Over 67 participants joined in three walkshops**, which were held on November 1 and 2, 2022. The following is a summary of the number of participants that joined the walkshops:

26 Participants	Tuesday November 1 <sup>st</sup> , 4:30 to 6:00pm
17 Participants	Wednesday November 2 <sup>nd</sup> , 9 to 10:30am
24 Participants	Wednesday November 2 <sup>nd</sup> , 12:00 to 1:30pm

In addition to the 67 participants, several curious neighbours and dog walkers spontaneously spoke with the project team members before and after the walkshops. In total, 41 workshop survey forms were submitted to the project team.



Image: Onsite Walkshop at DeHart Community park on November 2, 2022.

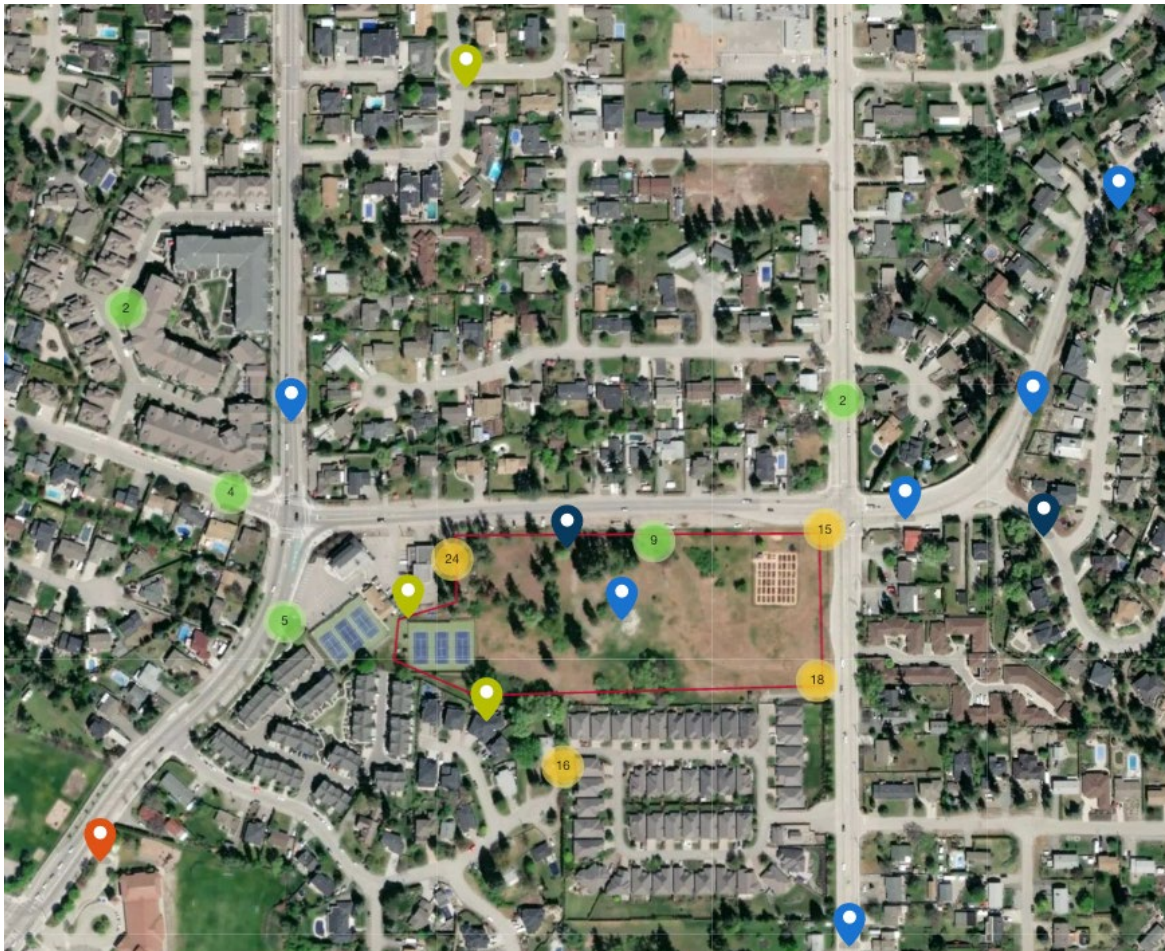
### Online Workshops

Three online workshops were offered for registration. Due to low interest, only one was held on **November 8th with 10 participants**. All 10 participants responded to polling questions and added feedback to a park map during the workshop.



## Online Survey

**400 community members participated** in the online survey, which was accessed through the Get Involved DeHart Community Park project page and was open from October 18 to November 20, 2022. An online map also invited participants to drop a pin on the park map to indicate where they travel from and by what mode of transportation (walk, bike, car, transit, other). **117 pins** were dropped on the map.



*Image: Get Involved project page interactive map of DeHart Community Park showing participant pins.*

## Onsite Walkshop Summary

Over 67 participants joined in three walkshops, held November 1 and 2, 2022.

Attendees were invited to fill in a paper survey throughout the walkshop. In addition, a large-scale aerial map of DeHart Community Park was posted, and participants were invited to add sticky notes directly to the map, indicating priority topics for them. While at the map, participants were also asked to indicate which direction they arrive to the park from and by what mode of transportation (walking, biking, car, transit, other), so that related infrastructure could also be considered in future park planning.

The following is a summary of feedback received from 41 survey forms and notes on the large-scale map. Please see Appendix A for detailed Walkshop feedback.

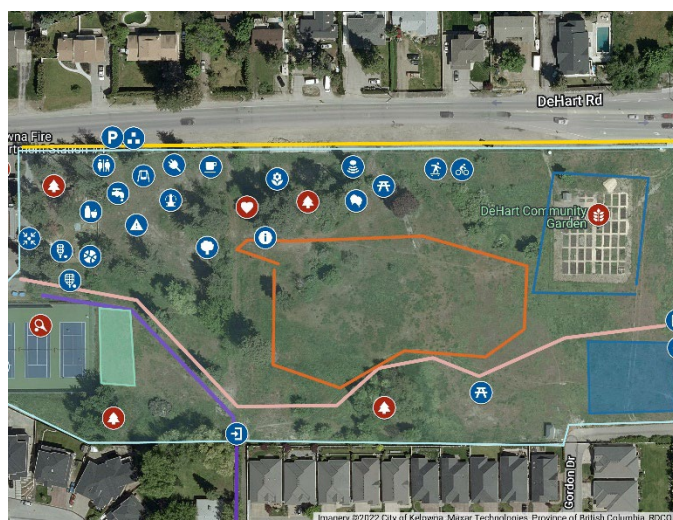
The survey asked participants to indicate top priorities for park planning objectives on a scale of 1 to 5, where 1 is the lowest level of support and 5 is the highest. The following table summarizes the order of the top ranked priorities:

Average Rank	Objective
5	To provide a community-level park in the Lower Mission neighbourhood
4	To ensure both the existing mature trees and natural vegetated areas are maintained wherever possible
3	To provide improved pedestrian and cycling access from the adjacent transportation corridors into the park site
2	To help the City of Kelowna achieve its goals for a carbon-neutral and sustainable site
1	To build upon the park's location adjacent to the existing Okanagan Mission Community Hall

On the walkshop survey map, participants were asked to indicate the features they currently most appreciate about DeHart Community Park ("things you love"). An interactive map of features and amenities people love and hope to see in the future can be found [here](#).

The features that received the most mentions were:

- Trees (23)
- Community Garden (16)





- Tennis Court (5)
- Shade (3)
- Open spaces (3)

*Image: Interactive map of Walkshop participant feedback*

The following table shows the top future amenities as indicated by Walkshop attendees on the survey forms, in order of greatest frequency. A complete list is shown in Appendix A. The desired amenities for the future of the park with the most mentions include:

Amenities	# of mentions
Fenced Off-Leash Dog Park	18
Paved paths for biking and walking	17
Playground	16
Water Park	13
Sidewalk & Bike Lane along DeHart Rd	10
Pickleball Courts	10
Skateboard Park	10
Picnic Area	7
Washrooms	7

## Online Workshop Summary

A total of 10 people participated in an online workshop on November 8, 2022. Please see Appendix B and C for detailed workshop feedback. The following is a summary of perspectives participants shared during the online workshop.

- DeHart Community Park is used throughout all seasons, with half of users visiting weekly or daily.
- The majority of workshop participants currently access the park by walking and are residents who live in the neighbourhood.
- The top activity participants currently use the park for is walking, followed by dog walking, and gardening. This reflects the current context of this undeveloped park.

Participants were asked to rank desired future park amenities on a scale from 1 (*Not Important*) to 10 (*Very Important*). The following table shows the top ranked amenities. A complete list is shown in Appendix B.

Amenity	Average Rank
Tree preservation/succession & habitat enhancements	8.9
Site furnishings (lighting, trash/recycling bins)	8.4
Improved pedestrian & bike access from neighbourhood	8.0
Community garden	7.8
Gardens (heritage, naturescape and sensory)	7.5
Covered gathering areas (providing shade and weather protection)	6.9
Opportunities to showcase and celebrate local indigenous culture	6.3
Interpretive signage (opportunities to share history, environmental information)	6.1
Large open space meadow	5.5
Quiet area for reflection and learning	5.5

In addition to ranking desired future amenities, attendees also provided feedback on an online Mural map of DeHart Community Park. The following is a list of themes received from the map comments and notes. See Appendix C for map and detailed responses.

- Include bike racks along DeHart Rd
- Public use of tennis courts
- Maintain beautiful trees
- Better parking
- Ensure good lighting
- Include a dog run
- Permanent community gardens

## Online Survey Summary

400 community members participated in the online survey from October 18 to November 20, 2022. Please see Appendix D for complete survey results. The following is a summary of perspectives shared by online survey respondents.

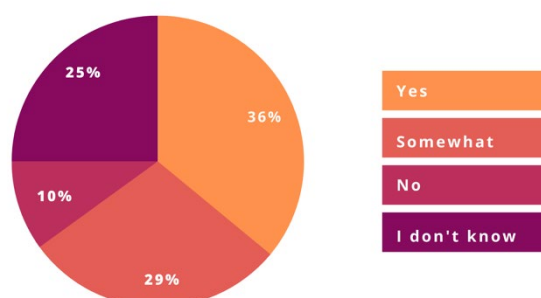
- Most respondents visit DeHart Community Park less than 10 times per year. Many use the park monthly or weekly, with few using the park daily.
- The park is used all year, with most visiting in the summer, spring, and fall.
- The majority of visitors typically access the park by walking. Some primarily arrive by driving or cycling, and very few currently access the park using public transportation.

Survey respondents were asked to indicate their top priorities for park planning objectives on a scale of 1 to 5, where 1 is the lowest level of support and 5 is the highest. The following table summarizes the top ranked priorities, in order of importance:

Average Rank	Objective
5	To provide a community-level park in the Lower Mission neighbourhood
4	To ensure both the existing mature trees and natural vegetated areas are maintained wherever possible
3	To provide improved pedestrian and cycling access from the adjacent transportation corridors into the park site
2	To build upon the park's location adjacent to the existing Okanagan Mission Community Hall
1	To help the City of Kelowna achieve its goals for a carbon-neutral and sustainable site

Survey participants were asked "Is what you consider important for DeHart Community Park reflected in Park Objectives? (listed in the table above)"

The majority of respondents felt what they considered to be important was reflected in the park objectives (36%). However, many felt that park objectives could be expanded on (29%).





Survey respondents were invited to further explain their priority objectives for the park. The following summarizes key ideas we heard from respondents in the open-ended question.

- Amenities that reflect diversity of ages, stages of life and neighbouring community - variety of activities for young children, teens, adults, seniors (play structures, active play, multi-purpose courts/recreation, bikes, walking, dogs, resting benches, community gathering space).
- Safety — lighting, dense shrubbery, access, Gordon and DeHart are busy roads, safe pedestrian sidewalks, road crossings and pathway connections on all sides, parking space that is safe along DeHart Road.
- Climate change/summer heat — shade trees, canopy, water cooling off areas, drinking water fountain, increasing summer heat, plant survival.
- Multi season use — all season considerations with some covered space for gathering.
- Acknowledgement of land, history of property, environmental information –signage to connect with Syilx Nation, Myrtie/Wilber Reid and Horak farm families. Explain why the park is named DeHart Community Park.

Note: this survey question referenced current City park objectives listed in the previous question. The majority of respondents provided explanations, which focussed on desired programming activities they wish to see in the park (not objectives).

Survey respondents were asked to rank the importance of future park amenities. The following table shows the top ranked amenities.

Amenities	Very Important	Slightly important	Not important
Site furnishings (lighting, trash/recycling bins)	83%	13%	2%
Tree preservation/succession & habitat enhancements	71%	23%	5%
Improved pedestrian & bike access from neighbourhood	62%	29%	8%
Youth activity area	62%	28%	9%
Trails	58%	34%	8%
Children's play area	60%	28%	10%
Washrooms	55%	33%	12%
Gardens (heritage, naturescape and sensory)	48%	40%	11%
Flexible space	40%	48%	9%
Covered gathering areas (providing shade and weather protection)	44%	43%	13%
Multi-use court(s)	47%	34%	18%
Diverse seating	36%	45%	16%
Community garden	43%	33%	22%
Picnic shelter	29%	51%	19%

Respondents were asked what else would be important for the project team to consider in planning the future of DeHart Community Park. The following is a summary of participant responses.

- There is a desire to ensure future planning acknowledges existing users/uses that have evolved over time. Dogs were the most frequently mentioned topic, the park has become a well-used dog walking and play area in the Mission neighbourhood. Many considerations for dogs were expressed including, having leashed and unleashed areas, and separating sizes of dogs in unleashed areas.
- Participants expressed a need to ensure the planning process addresses gaps in services by while acknowledging what facilities are currently available in the Mission Neighbourhood. In particular, nearby children's playgrounds and field space were noted while public access to tennis courts, teen spaces, skateboard parks, and community gathering spaces were expressed as missing in the neighbourhood.
- There are concerns with potential future homeless encampments and criminal activities in park.
- Participants shared concerns for the current safety and accessibility of the Park. In particular, safety feedback included traffic and vehicle speed, a lack of safe parking, and a need for safe sidewalks. Suggestions for accessibility included more accessible pathways (paved for all wheels) and inclusive play structures (for all ages/abilities).
- There is a desire to see DeHart Park used as a community gathering space, with suggestions from participants including programming for outdoor events such as, music and theatre in the park, community picnic space/events, yoga in park, hosting a weekly farmer's market).

# Appendices



## Appendix A: Onsite Walkshop Detailed Responses

### Who attended

Over 67 participants joined in three walkshops, held November 1 and 2, 2022.

The following is the feedback received from 41 survey forms and sticky notes from the map completed during the walkshops.

### Interactive Map

Participants were asked to draw a heart show what they love about the park today and to draw a triangle to show what they'd like to see in the future.

The following tables show the elements participants love and would like to see in the future. An interactive map showing features and amenities by location can be found [here](http://bitly.ws/ynQ8) (<http://bitly.ws/ynQ8>).

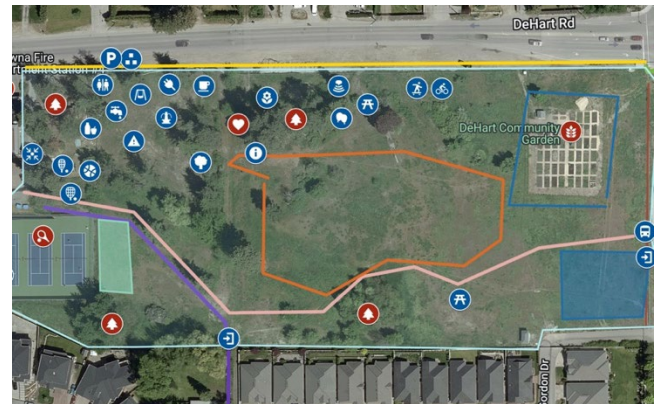


Image: Map of DeHart Park showing Walkshop feedback.

Elements participants love	# of mentions
Trees (retention)	23
Community garden	16
Tennis court	5
Shade	3
Open spaces	3
Access	2
Natural landscape	2
Multi age use park	2
Location	2
Green space	1
Dog friendly	1
Dip in ground on south side	1
Firehall	1
Fence along Gordon Drive	1

Elements participants would like to see in the future	# of mentions
Fenced off-leash dog park	18
Paved bike/walking path	17
Playground	16

Water park	13
Sidewalk & Bike Lane (along Dehart Rd)	10
Pickleball courts	10
Skateboard park	10
Picnic area	7
Washrooms	7
Environmental restoration	6
Seating & covered areas	6
Landscaping	6
Bike/pump track	6
Space for community events	5
Parking	5
Lighting	5
Public access to tennis courts	5
Clustering loud activities	4
Connectors to ATC Bus	4
Bike racks	3
Basketball courts	3
Additional tennis courts	3
Ping pong courts	3
Path to hall	3
Multi-use sports court	3
Dead vegetation removal (fire safety)	3
Amphitheatre	3
Interpretive signage	2
Water fountain	2
Wider walkway entrance from Sherwood Dr	2
Entrance to Park from Gordon Dr	2
Safety	2
Indoor tennis courts	2
No fencing	2
Running track	2
Green space	2
Food trucks	2
Seating	2
Quiet area	2
Visible line of site	2
Outdoor fitness equipment	2
Multi age use park	1
Music spaces	1
Nature	1
Get Okanagan Mission Community Hall involved as Partners in Parks	1
Rubber walkways	1
Public art	1
Accessibility	1
Dogs off-leash hours	1

Memorial plaques	1
Garbage and recycling bins	1
Shade	1
Adult swings	1
Climbing trees	1
No skateboards	1
No activities too close to homes	1
Farmers market	1
Concession stand	1
Path from Sherwood Rd	1
Bike Access from Westpoint Dr	1
Rotary Capri Peace Pole	1
Destination for local school classes	1



## Future Amenities

---

Participants were asked to circle their top five priorities from a list of future amenities. The table below shows a list of amenities in order of priority indicated by participants.

The “% of Participants” column shows the total percentage of participants that include the amenity in their top five list. For example, 73% of walkshop participants include washrooms as part of their list of five amenities they would like to see in the future.

Amenities	% of Participants
Washrooms	73%
Covered gathering areas	59%
Site furnishings	59%
Children's play area	56%
Tree preservation	51%
Trails	49%
Gardens	46%
Community garden	44%
Youth activity area	44%
Picnic shelter	41%
Large open space meadow	34%
Bookable areas for picnicking and BBQ	34%
Interpretive signage (opportunities to share history, environmental information)	32%
Quiet area for reflection and learning	32%
Dog run	32%
Multi-use court	32%
On-site parking	32%
Novice mountain bike course (ages 8-12)	29%
Diverse seating	27%
Plaza/courtyard/public event space	27%
Fitness loop equipment	24%
Performance and event space	24%
Green amphitheater	20%
Public art	15%
Flexible space	15%
Sports field/courts	15%
Public art	12%
Refreshment kiosks or concessions	12%

Participants were invited to add their desired future park amenities to a map. The following table shows a list of the desired amenities and the number of times they were mentioned.

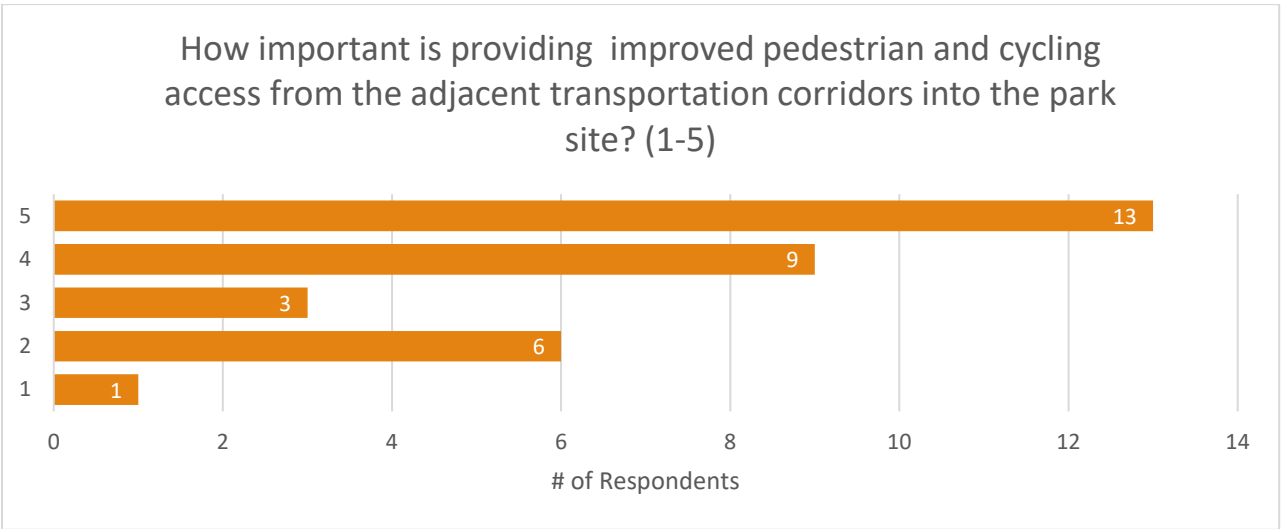
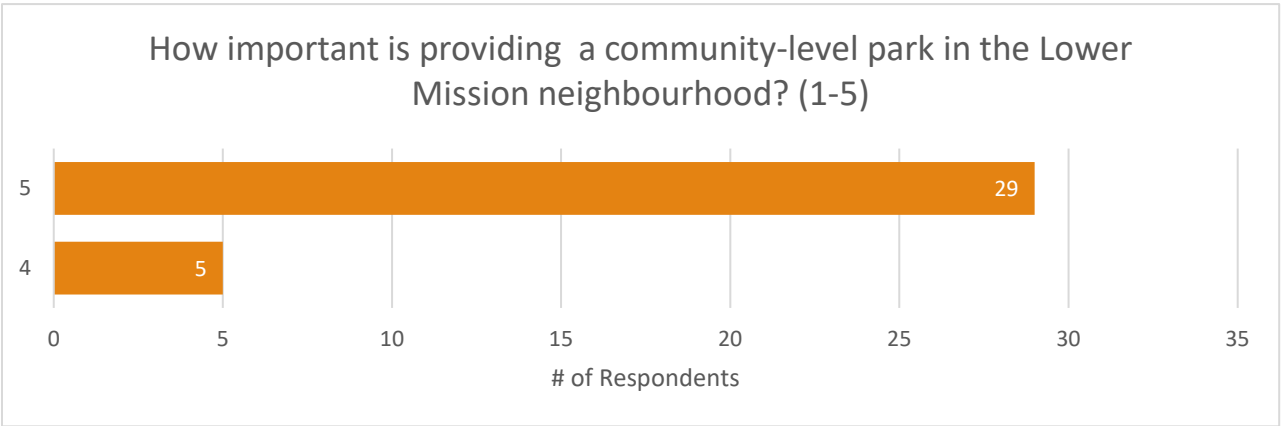
Desired future amenity	# of mentions
Bike/walking trails	4
Community garden	3
Dog park	2
Water park	2
Paved walkways	1
Rubber walkways	1
Washroom	1
Group exercise	1
Multi-generational facilities	1
Drinking water fountain	1
Natural playground	1
Ecological restoration	1
Bike rack	1
Skateboard park	1
Concession	1
Food truck	1
Landscaping	1
Pickleball courts	1
Public art	1
Winter use	1
Parking	1

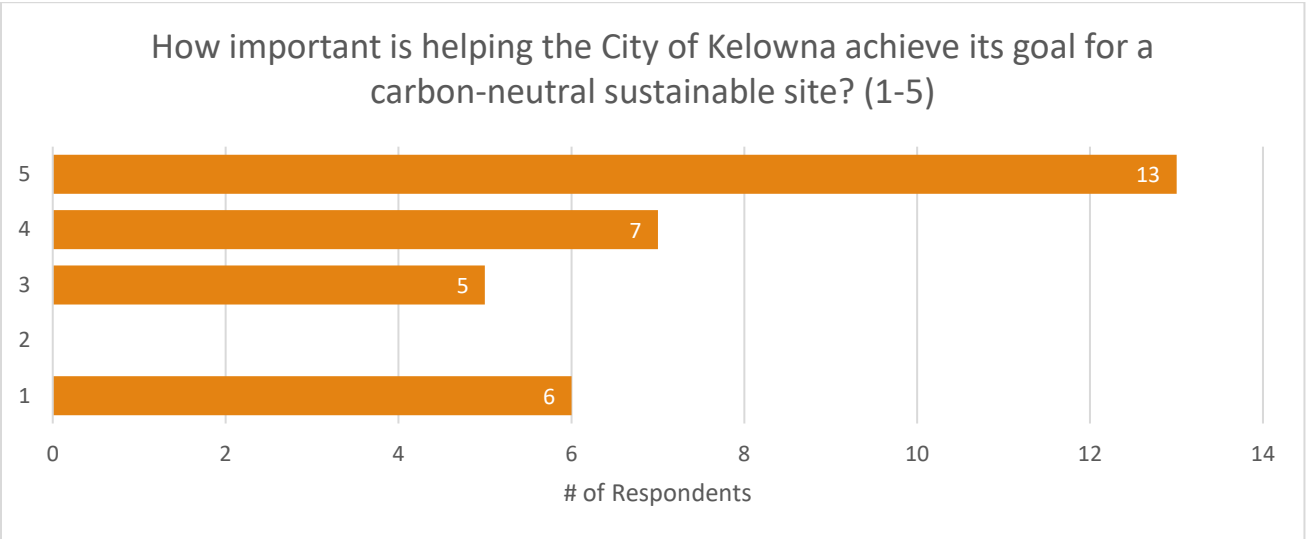
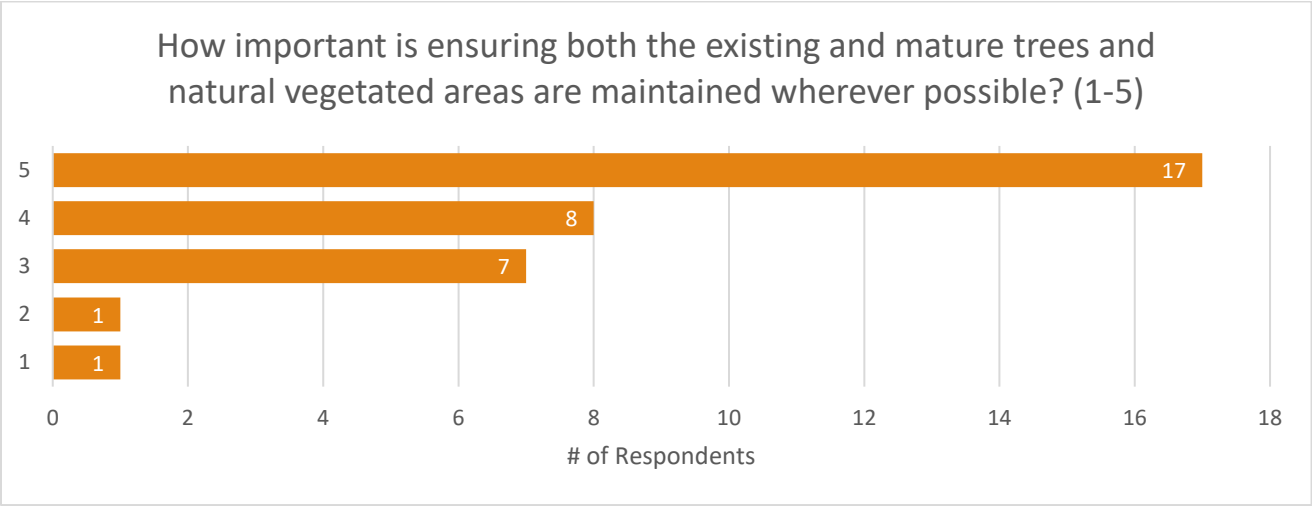
# Park Planning Objectives

Participants were asked to indicate their top priorities for the park planning objectives on a scale of 1 to 5, where 1 is the lowest level of support and 5 is the highest. The following five objectives are listed in order of their importance to participants:

- 1. To provide a community-level park in the Lower Mission neighbourhood
- 2. To ensure both the existing mature trees and natural vegetated areas are maintained wherever possible
- 3. To provide improved pedestrian and cycling access from the adjacent transportation corridors into the park site
- 4. To help the City of Kelowna achieve its goals for a carbon-neutral and sustainable site
- 5. To build upon the park’s location adjacent to the existing Okanagan Mission Community Hall

The following graphs show how participants ranked each objective.





Participants were asked to indicate if there were any priority objectives missing from the above list. The following table shows additional priorities and the number of mentions they received.

Priority Objective	# of mentions
Interpretive signs	1
Community connections	1
Shade	1
Indoor tennis courts	1
Tree retention	1
Natural playground	1
Irrigation	1
Pickleball courts	1
Safety	1
Ecological restoration	1
Winter use	1

Participants were asked if there was anything else they would like to let the project team know about their desired for the future of DeHart Park. The following table shows additional feedback and the number of mentions they received.

Theme	Times Mentioned
Walk/bike trails	3
Clustering loud activities	2
Skate park	2
Accessibility	2
EV charging station	1
Public wi-fi	1
Wetland/pond	1
Fence on Gordon side	1
Natural space	1
Pickleball courts	1
Removing dangerous trees	1
Free access to tennis courts	1
Running track	1
Shade	1
Water park	1
Summer use	1
Winter use	1
Active transportation	1
Parking	1



## Appendix B: Online Workshop Detailed Responses

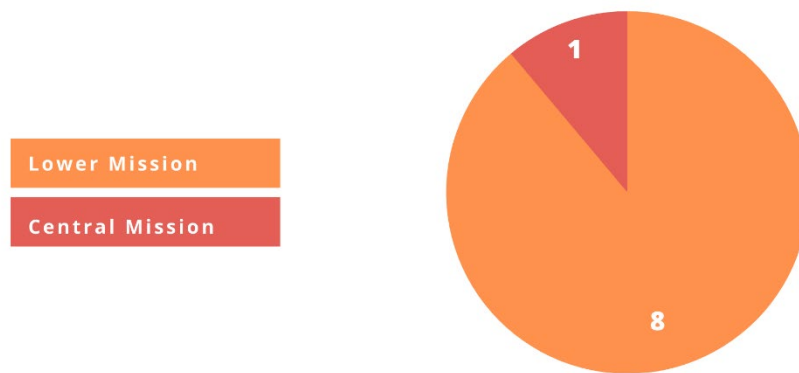
### Who attended

---

There were 400 total responses to the online survey, and 10 participants in the online workshop. This section shows only the responses from the **10 people** that participated in the online workshop on November 8, 2022.

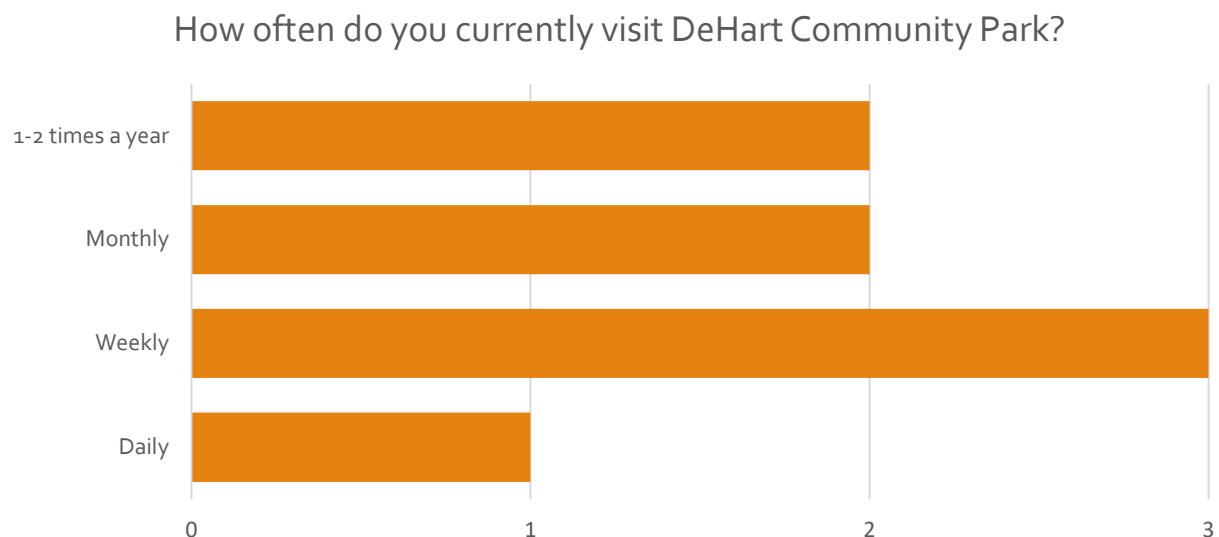
### From where

---

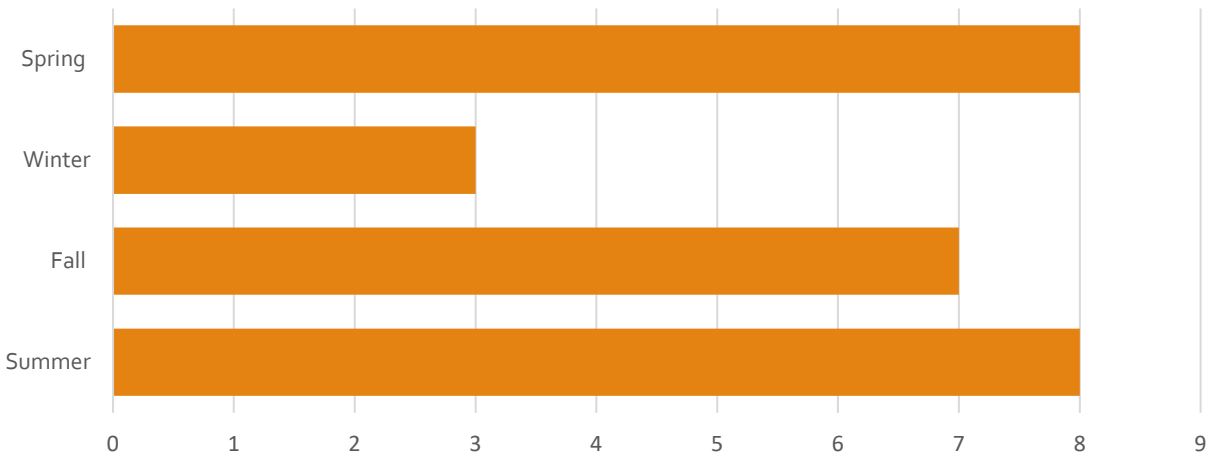


### Park Use

---



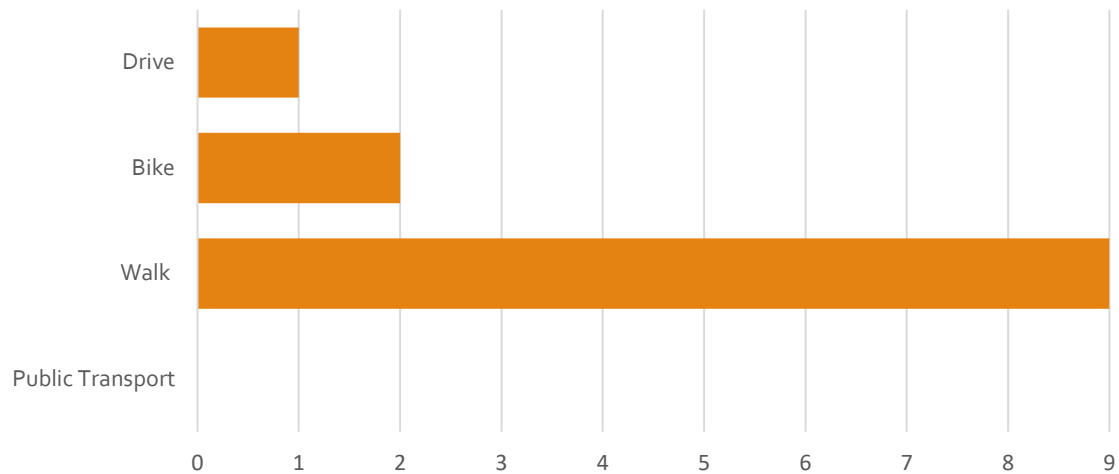
Which seasons do you currently visit the park? (more than one response permitted)



## Park Access

---

How do you currently access the park? (more than one response permitted)





## Future Amenities

What words would you use to describe your desired future DeHart Community Park?

- Sport court
- Nature, accessible
- Natural, open, multi-generational
- Garden
- Walking
- Community hub that allows you to meet other neighbours. We have met many neighbours while tending to the garden.
- Nature trails
- Benches
- Washroom
- Garbage cans
- Interpretive signs
- Being close to nature
- Dogs allowed
- Dog friendly, kid friendly
- Running
- Place to throw the ball for the dog
- Community Garden

Please rank the following possible future park amenities, many of which were identified in 2010 engagement.

Amenity	Average Rank (Score out of 10)
Tree preservation/succession & habitat enhancements	8.9
Site furnishings (lighting, trash/recycling bins)	8.4
Improved pedestrian & bike access from neighbourhood	8.0
Community garden	7.8
Gardens (heritage, naturescape and sensory)	7.5
Covered gathering areas (providing shade and weather protection)	6.9
Opportunities to showcase and celebrate local indigenous culture	6.3
Interpretive signage (opportunities to share history, environmental information)	6.1
Large open space meadow	5.5
Quiet area for reflection and learning	5.5
Washrooms	5.3
Dog run	5.3
Sports field/courts	5.1
Children's play area	4.9
Multi-use court(s)	4.9
Picnic shelter	4.6
Bookable areas for picnicking and BBQ	4.4
Fitness loop equipment	4.1
Plaza/courtyard/public event space	3.3
Novice mountain bike course (ages 8-12)	3.1
Performance and event space	2.8
Public Art	2.5
Refreshment kiosks or concessions	0.8

## Appendix C: Online Workshop Locational Responses

### DeHart Community Park Online Interactive Mapping Exercise

During the online workshop, participants were invited to add sticky notes and icons to a map of the Park. The map shown below includes input received from 10 online workshop participants.





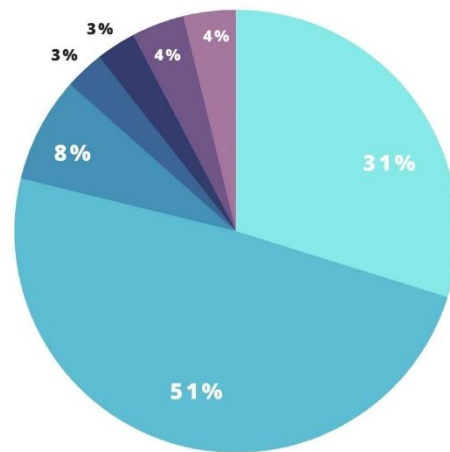
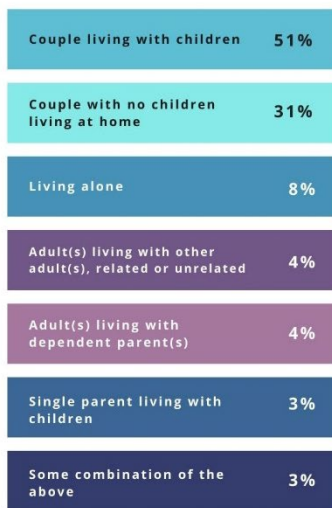
## Appendix D: Online Survey Detailed Responses

### Who participated

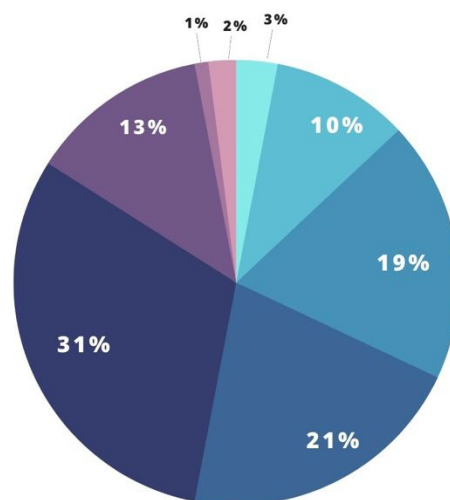
400 people participated in the online survey from October 18 to November 20, 2022. The total number of responses for each question ranges from 314 to 400.

### Demographics

What best describes your household composition?



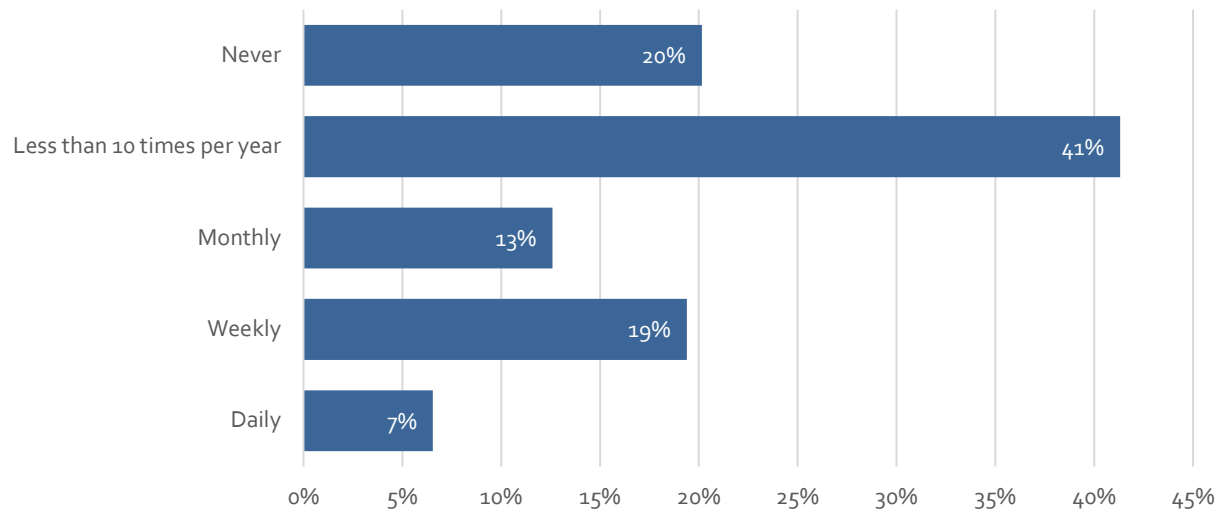
How old are you?



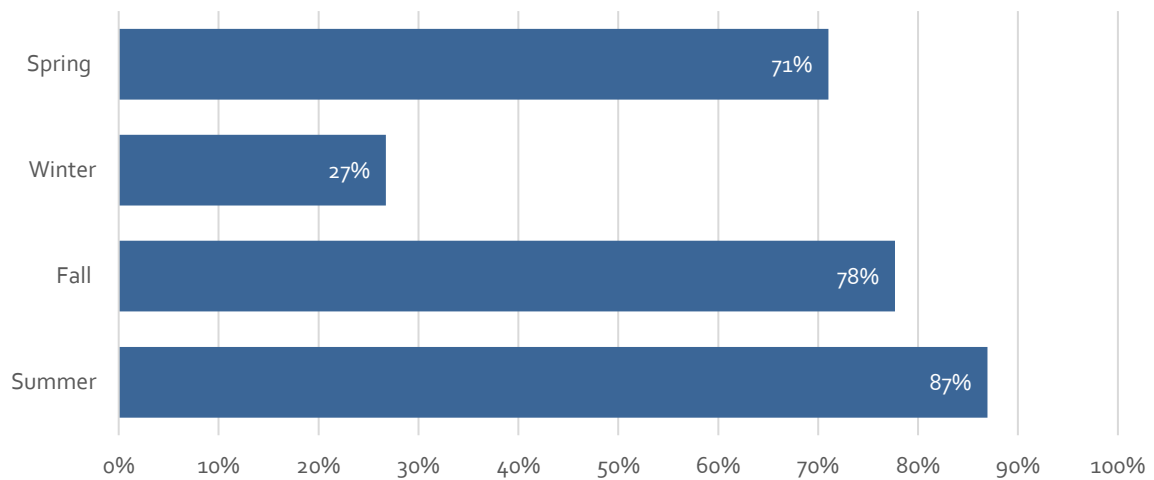
## Park Use

---

How often do you currently visit DeHart Community Park?



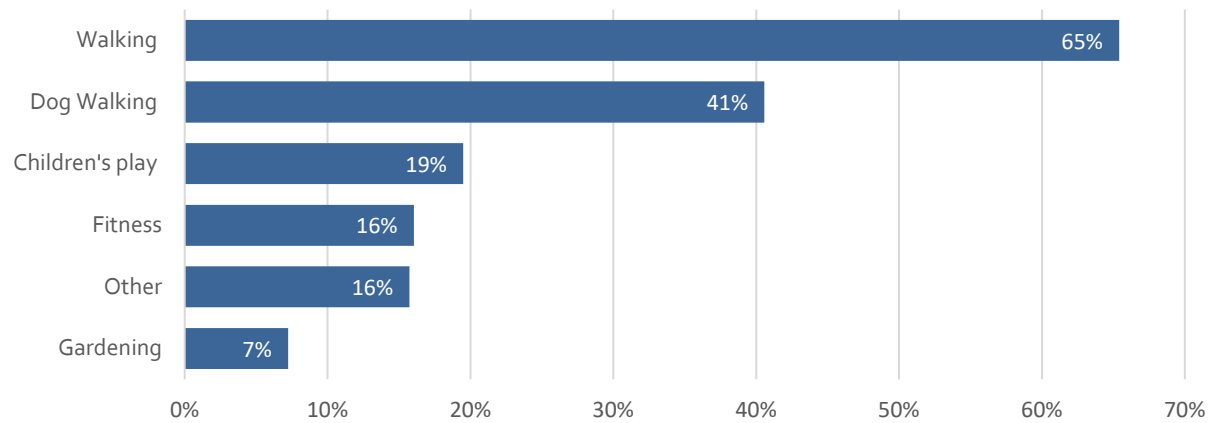
Which seasons do you currently visit the park?



## Park Activity

---

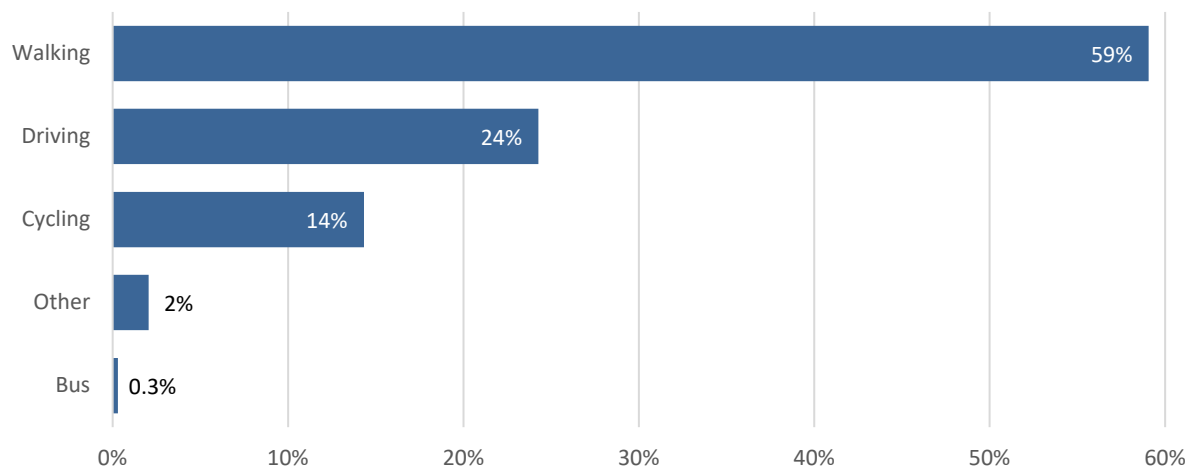
What activities do you currently participate in at DeHart Community Park?



## Park Access

---

How do you typically access the Park now?

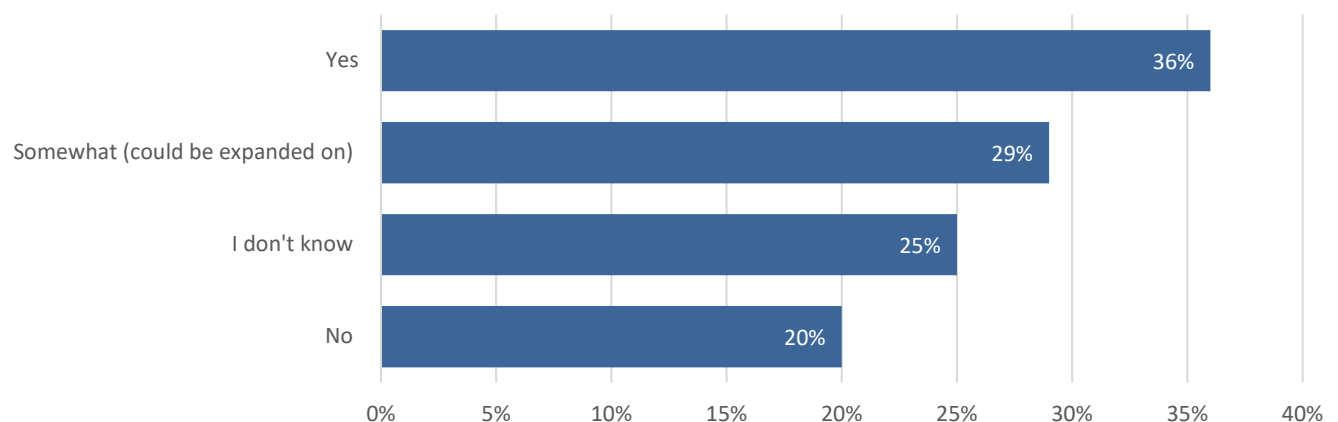


## Park Planning Objectives

How important do you think each of the following project goals are to the development of DeHart Community Park?

Goal	Very Important	Important	Slightly important	Not important	I don't know
To provide a community-level park in the Lower Mission neighbourhood	294	90	14		
To ensure both the existing mature trees and natural vegetated areas are maintained wherever possible	243	82	53	18	
To provide improved pedestrian and cycling access from the adjacent transportation corridors into the park site	212	108	57	18	
To build upon the park's location adjacent to the existing Okanagan Mission Community Hall	155	134	66	81	1
To help the City of Kelowna achieve its goals for a carbon-neutral and sustainable site	167	118	66	42	6

Is what you consider important for DeHart Community Park reflected in previous Park Objectives?



*The following table includes unedited qualitative survey feedback in response to Park Objectives, grouped into categories.*

<b>Access &amp; use (bikes &amp; pedestrians)</b>
Dirt jumps. Proper dirt jumps and pump tracks that ppl will use and actively enjoy maintaining.
an opportunity to footprint riding bikes into the next generation of Kelowna youth. They'll help grow Kelowna's pillars of mountain culture (tourism, economy, mental health, climate change). And without it being about racing or the exclusiveness that comes with lift-access bike parks and the like.
British Columbia is the premier mountain bike destination in the world. All the innovation, all the photographs, all the inspiration comes from here. It's the heart. And Kelowna ignores, which is a serious disservice to these kids and the community.
Biking should be a priority.
Improve access to the park on all sides add a variety of recreational opportunities for all ages
I'm a 15 year old and there are already so many walking areas and open parks and me and my friends need some place where we can ride our bikes. This hole DeHart park should be one big bike park
This sidewalk would also the improve safety of children walking to the local schools and ideally decrease the vehicle traffic at school pick up and drop off.
Add pump track
Busy road. Pedestrian and bike access could be challenging to address.
This location is situation in the midst of 3 busy roads/intersections, and as such, i believe that the main attractions for this space need to be something vibrant and lively that aligns with the realities (noise, vehicle traffic impacts) of this location. My personal top priority would be consideration of a mountain bike skills park and pump track (beyond the interim childrens mountain bike park shown on the preliminary map). MTBCO the local mountain bike organization, may be interested in collaborating on such a project. Possibly closer to Gordon, where a 'sensory garden' is currently envisioned.
<b>Access (vehicles)</b>
Will there be parking options, safety measures to protect children from busy traffic?
Having proper parking along DeHart would be good. The basketball court is of most interest to me and my family.
I am not cognizant of the previous objectives, but accessibility by all means of transportation is important so that all users have a good opportunity to make use of the park.
<b>Children &amp; youth</b>
Would like to see more space provided for playground.
I want a play structure that has structures for young children to old. A splash park would be very fun and a great way to cool down in the summer.
I think the city has to be careful in providing children/youth activity areas because the park is right in the middle of a residential area. Youth in the park at night can lead to noise complaints.
I think a larger area for young kids to play on. The sports courts and skateboard area are great for older kids. However a large playground similar to Quilchena park would be great to have in the lower mission that families can walk to.
A proper playground is not accessible to younger children in the neighbourhood (i.e. 2-5 year olds) - play spaces for kids are a big priority.
Also my children grew up in this neighborhood without a playground. Please add this into your plan
Need more children's activities such as skate park or bike skills park.
The mission area is missing a green space where kids can safely run and play. Benches for adults and play structures for kids. The play structure should be innovative.
Need more children play structures
A playground would be extremely beneficial as there aren't any nearby (Raymer road area)
These kids need a place to experience mountain culture that isn't a car ride away. Building the foundations for lifelong joy of nature, bikes, sport, fresh air, and an inclusive community.
I think our neighborhood needs a place for teenagers to be. Disc golf, high ropes course, bmx area, skateboard area, zip line, etc. I love the planned court for ball-hockey or basketball but needs more like that.
I would like to see a playground installed that could be utilized by small children aged 0-3 or 0-5. There are currently limited options in lower mission, despite a large number of young families with very small children. Most playgrounds in the area are designed for school-aged children, which forces us to drive to other areas of Kelowna such as Glenmore or Rutland.
Space for teenagers to hang out in this area. Ie: a skate park.
Need to have a play structure for kids like kettle valley
I would like to see a playground area and picnic area to invite families.
Children's play structures should be one key aspect if the part. Melbourne, Australia has an awesome number of amazing family parks. We could get ideas from their designs.
I wish the park for children was bigger
<b>Community garden</b>
I don't see the community garden in the original plan. I think it should remain in the park and expanded on. Youth in the park at night could lead to noise complaints.
I sort of like the communal garden that is there now
Consider winter uses, and enhancement of the community garden infrastructure. Also, park development is well funded through dcc charges
Community garden not in original plan
To provide youth with a place to engage in fun safe activities
Given the vast increase in housing now building in the area, this park seems minimal. More green space is needed. Will the public gardens continue in the park?



What would be built to achieve objective e? A forest?! Or a community garden? A community garden is an excellent way of achieving those goals, so that objective is important to me if that is what the result would be.
Community garden is important
Community garden
Keep community garden
I am a member of the community garden in that park. My hope is that it will not be removed. In fact, given the size of the park, it could accommodate a much larger garden. The waiting list is very long and no doubt would be filled immediately. As with all the community gardens, it is built by volunteers and the society provides the building supplies, etc. I see no reason for a kids park area - it will not be used to any valuable extent. Better the water be used to water vegetables, fruit and flowers than grass.
I hope keeping the community garden is an objective and wonder if this is a park for all ages?
I love the community garden but i would love to see school students involved too
Need to keep the community gardens
Retain community garden. Plant pollinator garden.
Should still have a community garden space.
The community gardens are not in the design which have been valuable to neighbors to sustainably grow vegetables whose backyards cannot accommodate.
<b>Dogs</b>
Nearby townhomes use this as a dog park - it should stay dog friendly as there aren't many options in the area and many dogs
The park needs to be dog friendly. There are so few dog friendly parks in this town. Honestly, the city's policy about dog access is completely outdated and doesn't reflect the community's needs in regards to access to park land for dog owners.
Would like to see part of the park have dog area
Does not reflect the needs of the community.
I also think it would be extremely valuable to add a dog park space to the plan. I know that there is a dog park space near h2o, however, with the increase in dog ownership in Kelowna in addition to our continued growth as a city i believe this will provide an immediate need to the community.
Need to include dog friendly walking area. Can be on leash.
I think it should also include a off leash area so myself and my neighbours don't have to jump into our vehicles to drive to nearest park to allow off leash. Its inconvenient and not helping for the environment
I would love dog friendly walking paths through the park (no dog park needed)
Please add a dog park area.
I would like to see a small dog off-leash area. We could walk our dogs over and get to know our neighbours better while the dogs play.
An area for adults and dogs to play and be a family in a healthy outdoor space is very important since building up with apartments and homes having none or little outdoor green space. We need to include dogs to be part of the family.
I would like a dog park included in the plans. There are very few of these in the city/none in the neighborhood. We have an elderly dog and i would like the opportunity for my dog to be welcome, walk on the trails, and join in the fun that can be had by all. Asking for dog-friendly dog park.
Responsible dogs and their owners (on-leash) should be allowed to enjoy the park.
Consider an off leash dog area, perhaps linear around the perimeter e.g. Knox linear off leash. The mission dog park is becoming very crowded.
I would like to see more dog parks for small dogs. Also, for a dog park i would like to see a nice dog park. Not just dirt! Maybe grass with obstacles so the dogs can be physically & mentally stimulated. What i am saying is let's get a upper scale dog park and not just dirt to play in! Thank you.
There are not enough off leash dog parks in walking distance of the upper and lower mission.
The city of Kelowna needs more dog-on-lead parks. Dogs on lead do not pose any community issues such as too close to child equipment since the dogs are on lead and as per city rules the leads are max 2m.
A section of this park should also be dog off lead. The offerings for dog off lead parks currently in Kelowna are abysmal. Many are dirty, unsanitary (mushroom beach) or are too small to throw a ball or have multiple dogs in it at once. The only proper dog off leash areas need to be driven to which is not in line with the city's sustainable initiatives. As a growing city we need to accommodate dogs and dog owners as a healthy part of our communities.
Dog park
Could include a dog park?
There are lots of people that walk their dogs in the park - is there an opportunity for an off leash dog area?
We need more large open spaces for people to play frisbee or ball with their dog(s). Nearly every home in this area has at least one dog. It's be nice to not have to drive to a park to play with them.
Needed off-leash area for the dog. As other 2 mission dog parks are too crowded.
<b>Natural features &amp; environment</b>
I would like to see treed seating areas.
I have not read the document but we as a family were involved in the 2010 plan. Due to the infill of housing in this neighborhood sooo very many old trees have been taken down. It is my hope that the loss of more mature trees is not going to happen with this project.
To support biodiversity, i would like to see a very strong emphasis on beneficial native plants in the landscaping.
More nature for families to enjoy
I believe a central community park is vital for the lower mission area with utilization of existing green space.
Maybe some mention about the importance of maintaining green space for both environmental and public health purposes
We need lots of trees to provide shade for people to truly enjoy
Will there be any buildings constructed? Will there be a plan for a natural ecosystem?
Keeping the trees and vegetation is important.
Replacing invasive elm trees would enhance the area.
I would like to see the area have more trees and indigenous gardens,

I think there needs to be a lot more shade and tree canopy in Kelowna for our hot summers.
Preserve the trees for environmental cooling due to the extreme heat last few years. Trees especially native species and habitat for the native animals
<b>Noise &amp; safety</b>
Having clear open visibility throughout the park will create a safe family/ community park. Retaining too much of the existing nature/shrubbery can create a park that's perceived to be unsafe.
<b>Lighting and noise</b>
We need to see safe pedestrian access connecting this park to the community homes of the lower mission. A main walking route involves Sarsons road which does not currently have a sidewalk. This is a busy road and without safe sidewalks and at least one blind corner. Our young family feels unsafe walking or riding our bikes to DeHart park. We strongly feel that families should be encouraged to walk and ride with their kids whenever possible and safe sidewalks is an important community initiative to encourage active citizens and reduced carbon emissions. By building a side walk in Sarson rd you would great a wonderful park connect between DeHart park and Sarsons beach park. This connection would add to our sense of community and provide an excellent walking route.
Please add basketball courts with lights
Design could be improved for security reasons. I live adjacent to the park and would not like to see a path right behind my yard. We have already had kids loiter in the trees, throw garbage, smoke drugs, etc and would prefer the path to be pushed farther back from the south fence line (ie north around "the hill". Furthermore have people looking into our house and yard that may be looking for potential break-ins.
I don't think the road adjacent parts of this park are desirable locations for 'sensory gardens' or other quiet contemplative features. Imo, such features would be better placed in quiet sheltered treed areas toward the centre of the park.
Safety is an important consideration - please elaborate on the lighting for paths ( safety but also respecting neighbors of park that it is not too intrusive); and any additional features
<b>Skateboard use</b>
I really like the little skatepark and is sorely needed for teens in the mission!
I would like to see a skate park
Would love to see a skate park like at ben lee
Please provide some space for a neighborhood level skatepark. Kids in lower mission have to ride the bus for 2 hours to get to ben lee and the downtown skatepark is terrible.
Please include a true skate park. I currently drive my son to the West Kel or Rutland or lake county. Even something like Peachland or Osooyoos or Oliver would be ok. Just rails is not enough. He didn't use the ramp at h2o because it wasn't 'fun'.
<b>Skatepark</b>
Expansion on the skateboarding/roller sport half of it. The community was promised a skateboarding plaza in the mission and this was our initial project space, following the kinsmen field house location. The influence skateboarding and having a great park if your community makes is substantial and shouldn't be skipped over. Tourism is increased, youth trouble is decreased and the community is bonded together better. It's an all inclusive safe space for the community to thrive off.
As a member of the skateboarding community in the mission, we do not have a skatepark in neighborhood. The proposed plans have some stuff to integrate skateboarding into the community but it can always be more. As skateboarding is growing extremely fast and becoming a more credible sport/ art( as it has been integrated into the Olympics) this would be a perfect opportunity to get the next generation of youth skateboarding and out of trouble. My friends and i made a petition a few years back, we got a mini ramp at the h2o bus stops. This is a great start but a new full size skateboarding park would be an amazing addition to the community.
Add a skate park and track
<b>Tennis/pickleball courts</b>
I would love the plan to include pickleball courts - an activity for young and old to play and more inclusive than tennis. Also, there are not many pickleball courts in this area of town.
I would like to see public tennis courts
Use 10% of the park to include additional tennis and pickleball courts. Mission tennis courts are fully used, and maintained at no cost to tax payers. There are hundreds of tennis and pickleball players.
The city needs indoor/outdoor tennis courts there.
Feel pickle ball courts would be a real asset as it is so popular and this is a perfect location near the tennis.
Am unsure how the existence of the private tennis courts adjacent to the park is relevant, other than to signify that public courts are lacking.
I was sad to see the mission tennis club was not allowed to add a tennis bubble. People are left to drive 15-20+ minutes to play tennis during the winter which further contributes to traffic.
Tennis is one of the fastest growing sports in Canada and is a great sport for all ages. Unfortunately, there aren't very many courts in the city of Kelowna. The ones that are available are usually always booked. It would be wonderful to have a much needed indoor facility for the large number of players in the tennis community.
Additional tennis courts or a covered tennis court area
Public tennis and pickle ball courts would be amazing along with a park area with paths and benches to sit and enjoy treed area.
<b>More tennis courts</b>
Expand the existing tennis footprint with a an accommodation for pickleball
Kelowna has a large tennis community. It is important that the three existing tennis courts will remain tennis courts only. If pickleball is incorporated, courts need to be added for pickleball only.
To add much-needed courts (tennis or pickleball) to the mission area. The population of the upper and lower mission is huge, yet there are few tennis and/or pickleball courts to serve the population - which would keep drivers off the road if they could play locally.
The city of Kelowna needs more pickleball courts
Second priority would be additional public tennis courts or other family friendly recreational amenities. Selection could be based on a citizen survey of options.

As a community member i spent a lot of time with the parks planner about 10 years ago. We thought we had a good design then so i like to see that design carefully incorporated into anything new. We had outdoor barbeques, outdoor multi-purpose courts (basketball, ball hockey). I also would love to explore the expansion to a "4th" tennis court- out into park) which would be covered for winter tennis-bubble at that time of year would be a very limited problem for neighbours- bubble removed during summer!
I like the areas dedicated for activities like mountain biking, skateboard rails, etc. I am not a pickleball player myself but given the sports growth dramatic growth and popularity wonder if this might be a great opportunity to add some pickleball courts here to help support this need within the city?
<b>General recreation/amenities</b>
An outdoor workout area (parcours) with a few options for individuals wanting to get a workout in. I also think the area should have sufficient shade for the hot summer months, perhaps an area that has a roof.
There needs to be a lacrosse box in park
Water park
Green space is needed, but really need more defined uses, such as a community hall, proper biking and skateboard park, water park, playground.
We need a multi sport court with hockey and a pump track path for kids. A baseball diamond would be great as there are no fields nearby for kids 9 & up to use, as the mission rec fields are for adults. Many, many families are driving all over Kelowna to Edith gay and Lombardy fields because we don't have a useful option close to us.
A park divided into different use areas e.g. Play area for kids (including a water park), open field, dog park, benches and shade.
Fitness in general, but youth fitness and programming in particular
Basketball and tennis are woefully lacking in our area. The mission tennis club has tennis courts but their memberships sell out within a few minutes and the hourly cost can be prohibitively expensive for some people. It is very important to me that we have public basketball courts and ideally public tennis courts as part of the park design. While the nearby schools have basketball courts they are built for children (not adult height) and the surfaces are in poor condition.
Basket ball court
More advanced features
Safer roads and multiple crossings available around all sides to access. Basketball, sport courts, lighting. Running tracks that are not just gravel. Playgrounds for little children, bike park or bike ramps for kids to ride their bikes and practice. Soccer nets at each end of the field.
The current use is limited to the ok mission tennis club and community garden space. The rest of the land is essentially vacant and undeveloped and believe this space should have additional recreational opportunities.
Parks should support and promote active lifestyles
Path needs to be added, nature preserved and ideally some installations to facilitate the organisation of community activities (bathroom, covered area with table). I think the side of DeHart's road also needs to be redone - right now it creates so much dust. Thank you!
I think there needs to be areas for different ages developed within the park ie playground or waterpark for kids. Benches with landscaped "meditation" garden. Walk/bike lanes, etc
Facilities and amenities. Quality washroom facilities— maybe the self cleaning ones they sometimes install in cities.
A multi function space. Space for dog walkers, space for the community garden, space for kids to play - how about a skate park?. Place for people to walk. An open concept, effectively lit area that allows for evening use and decreases the transient sleeping and still allows some wildlife.
I think it could become a community gathering place for people in the surrounding neighbourhood.
Provide a space for health & fitness for everyone without membership fees.
What is the focus ... add a playground? Create picnic sites? Support lawn sports like bocce? Ensure shade? Will there be basketball hoops for teens?
We need more recreational space for disc golf
What kinds of amenities will be provided? None of the priorities reflect the programming of the site.
Perhaps this is addressed later in the survey, but i think that community usability is critical. Is it a space that has a variety of use cases, that is established to add to the fabric of the community? Is this reflected by seasonality? For example, are there play areas (kids, sport/recreation), an off-leash park for dogs, a landscape feature that is a natural meeting place, etc.
Provide playground and picnic areas for families
A community park available for all ages is very important.
I'd like to see expanded recreational opportunities within the park.
<b>Other</b>
I'd like to see Mr. Reid (who's property it was for many decades) be recognized in some way
I really like the plans that have been provided and am very excited to see all of these new changes to come. I think this will be a wonderful addition for Kelowna.
It's been 10+ years since i've seen the original plan, I likely don't remember all the details. Why don't you include them, the previous objectives, before asking this question?
What are the previous park objectives?
I'm not certain what previous park objectives were. I do know that i was involved in the community consultation for this park that took place 13 years ago and i'm disappointed that it's taken this long for the park to get the go ahead. If the money was not available back then to develop the park, i don't understand why all the planning took place.
Vague, not sure how it will be actualized
I like what's been done but there's always room for improvement.
Previous plans didn't listen to whole community and consider views of neighbouring property owners
I did not see the previous plan so perhaps some of these questions were answered there.
The naming of the park DeHart why has this been chosen ?
Not sure what previous objectives were
The city is doing a better job at planning for the future!
This is the first park survey i have participated in (not originally from Kelowna)

## Future Amenities

The following table is a list of possible future amenities or features for DeHart Community Park. Survey respondents were asked to rank the amenities as *Very important*, *Slightly important*, or *Not Important*. The amenities are listed in order from most important to least important.

Amenities	Very Important	Slightly important	Not important
Site furnishings (lighting, trash/ recycling bins)	83%	13%	2%
Tree preservation/ succession & habitat enhancements	71%	23%	5%
Improved pedestrian & bike access from neighbourhood	62%	29%	8%
Youth activity area	62%	28%	9%
Trails	58%	34%	8%
Children's play area	60%	28%	10%
Washrooms	55%	33%	12%
Gardens (heritage, naturescape and sensory)	48%	40%	11%
Flexible space	40%	48%	9%
Covered gathering areas (providing shade and weather protection)	44%	43%	13%
Multi-use court(s)	47%	34%	18%
Diverse seating	36%	45%	16%
Community garden	43%	33%	22%
Picnic shelter	29%	51%	19%
On-site parking	37%	37%	25%
Large open space meadow	33%	39%	25%
Opportunities to showcase and celebrate local indigenous culture	29%	43%	27%
Sports field/ courts	36%	32%	30%
Dog run	34%	31%	34%
Interpretive signage (opportunities to share history, environmental information)	21%	44%	34%
Quiet area for reflection and learning	24%	38%	35%
Novice mountain bike course (ages 8-12)	29%	29%	40%
Fitness loop equipment	20%	39%	38%
Plaza/ courtyard/ public event space	17%	41%	40%
Performance and event space	19%	37%	43%
Green amphitheater	17%	39%	42%
Public Art	13%	43%	41%
Bookable areas for picnicking and BBQ	15%	39%	45%
Entrance feature	11%	40%	41%

Hill	9%	30%	58%
Refreshment kiosks or concessions	9%	16%	75%

What else do you think is important for the project team to consider in planning the future of DeHart Community Park?

*The following table includes unedited qualitative survey responses, grouped by category.*

Access & Use (Bikes & Pedestrians)
I cannot stress enough that for families like mine with young kids, we're happy to ride with them on separated paths like nearby on Pandosy, but being within wobbling distance of cars going 60km/h is an instant deal-breaker.
Now is the perfect time to put a bike path adjacent to this new sidewalk, grade-separated from the road, before spending all this money putting in a brand-new curb and street trees in the wrong place. There is an opportunity here to not only create a safe way for families to ride to this brand new park with their kids, but to also make it safer for kids to ride their bikes on this busy section between the two very nearby elementary schools (DWE and AME) and popular route to Sarsons Beach.
Better pedestrian and bike access along DeHart
Strider bike / pump track ( could be integrated beside pathway)
Proper sidewalks on both sides of Dehart for the block between Gordon and Lakeshore. Perhaps a crosswalk as well.
Add a pump track!
Kelowna needs a paved pumptrack
We have enough sports fields within reason for the area. Don't do another sports field. Before doing another ill-fated "child mountain bike skills" course ... get some experts in dirt jumps and pump tracks to consult first.
Absolutely do not get rid of the mountain bike park course. It says "interim" at this point...really??? And gardening and nature stuff is more important? How often are people going to be walking through and enjoying nature or having community events around. The answer is rarely. People on this survey too probably talk about how they'll use the park etc for walks and sitting down and relaxing, okay ya there's already tons of places to do that. There are ZERO mountain bike course/trails in the area. Closest being east Kelowna bike skills park. Yet the population is huge in lower/upper mission with kids and this isn't a permanent idea? Shocked. Do not scrap it. We need this. There was a community built bike pump track in the upper mission near Frazier Lake but the city bulldozed it for no reason either than parking their trucks while the dam is replaced on the lake. Bottom story is, the bike track will be used tons and I among others will be tremendously disappointed if it's not included. Thank you.
There should be an advanced mountain biking trails along with the junior trails to make it fun for all ages
Pump track instead of MTB skills track. Pavement preferred, dirt/shale possible
Bike park would be amazing.
Lots of bike parking/racks
Beginner to advanced jump park with wooden structures to gain speed
A advanced bike park for ages 12+
Walking track around perimeter of park
Walking loop suitable for seniors & young children
Paths for walking roller blading wide enough for dog walking
Wheelchair accessibility. Paths to be paved.
Running loop with km markers. All season use.
The park is not that big! Can all of the above fit there?? I like the idea of having something for every age but there are two elements that concern me. 1. Adding a hill for mountain bike trails seems unnecessary and out of place. Why try to change the natural terrain of the park? It's not that big and there is a naturally wild and hilly place for mountain biking at Mission Ridge Park nearby.
My personal top priority would be consideration of a mountain bike skills park and pump track (beyond the interim childrens mountain bike park shown on the preliminary map). MTBCO, the local mountain bike organization, may be interested in collaborating on such a project. Possibly closer to Gordon, where a 'sensory garden' is currently envisioned.
A little pump track would be awesome
Multiple entrances, easily accessible
Access (Vehicles)
Ensure some parking is available. Families with little kids may have to drive on hot/cold days or toddler may not be able to walk that far. I support walking and biking-we bike there. But that doesn't fit all families all the time.
To design it around accessibility, shared pathways and bike lanes. Make it annoying to bring vehicles, if we encourage vehicle use that goes against helping the environment and exhaust fumes at parks are horrible. I understand a need of some parking, and those spots should have electric vehicle charging stations.
Parking! Lots of parking is important
Adequate parking
Accessible and available to everyone whether they walk, bike or drive.
Children & Youth



A children's play area could possibly include a splash park. A playground and kids bike area would be fantastic. I would also recommend pedestrian connection from the bus stop at Gordon Drive through the park (to both Sherwood and Mission Hall), as many Canyon Falls middle school students walk that route.
Would like to see playground, are for kids run, small shops - coffee shop, ice cream (not confession, shops); walking and biking access is a must; somewhere to lock up bikes.
Small water park for the kids
An epic playground and an epic water park would be amazing. City park is too busy with tourists. I live in Glenmore and north Glenmore elementary is so busy with kids wanting to be outside playing since they added a new playground. I am always looking for places for my child to play without having to purchase tickets for indoor play. Big, fun, interactive playgrounds and bike parks are needed.
I hope the space can target play areas for kids of all ages so families in the area can walk to the park rather than drive to other parks
Splash park for children
I would look to model Ben Lee Park, it's such a great multi-use park, with the walking trail and playground. Also, please consider placing the playground centrally, not near the perimeter where it's easy for kids to escape onto the road.
if there is to be a playground, make it fun and challenging
Innovative play structure and splash pad
Passive reaction equipment (natural/enhanced Parkour courses) where youth can engage in fitness activities without the need to purchase or have equipment
Love the idea of a bike park for kids!!! We need one of those out here in the mission!!
Playground
Our neighborhood needs a place for teenagers to be. Disc golf, high ropes course, climbing wall, skateboard area, zip line, etc. I love the planned court for ball-hockey or basketball but needs more like that.
Water park or a really awesome kids playground. Maybe a teenager type attraction like a skateboard area?
I think it should be split in half so half for young kids to bike and then a more advanced bike area for older kids. We don't need a walking area
We have sports fields and dog park at H2O (close by). Let's make this something more unique. Maybe with a small kids waterpark? Or a water garden/relaxation area? Along with other open areas for multi use/picnic/family playing, and walking and bike paths.
Gathering/play areas for young adolescents and teenagers, including site furnishings which are skateboard friendly
There are very few areas for youth activities, while there are many walking and family parks and areas.
We need something for our youth. We have school playgrounds cues and parks but no outdoor activities like skate board park and more courts
A place for kids to safely enjoy outdoor space and be active. A skate part, basketball court and something well lit.
Make the kids playground area out of natural material - log beams and big rocks for climbing. Maybe a boat made out of wood with slides/climbing structures going up to it.
Walking loop suitable for seniors & young children
Natural play areas for kids to free play
Activities and play area for kids.
It would also be great to have a little hill the kids can sled on in the winter as the closest one is in Kettle Valley. I think we have enough sports fields at the CNC center close by but a basketball court would be great as there aren't any at the CNC by the H2O or anywhere close by.
A state of the art playground for toddlers and younger kids and or an area similar to Ben Lee park where there's a pathway that circles the park.
I would love to see the local area school children have input into the decision making process. I am a teacher from Anne McClymont, and I would love to have an area that our school children could use for outdoor learning. It would be wonderful if they could be part of the interpretive signage too to share the local history of the area and environmental info. As a school, we would love to work with the indigenous community to add our local plants to the area and to include indigenous signage, create bee houses.
This should be a multi-generational park where all feel welcome and have options for activities. Also, it should be a place where families can linger while children play, and where the community can gather in informal, organic ways.
Creating a large excellent playground for multiple ages as now with the large amount of young children, the closest and best play area is in upper mission which is where everyone from the lower mission has to drive to creating more traffic issues.
Playground designed for small children (ages 0-3 or 0-5)
A space for kids and teens to play and hang out!!! Waterpark, free tennis courts/basketball courts... playground for kids that's not in a school.
We have no large play structure with multiple swings either.
Please consider what amenities exist in the spaces nearby (CNC / H2o has field space), Schools (DWE / AME / BCE - all have playgrounds)
A play area for kids is important
With the 4 schools close by, input from them would be invaluable and carry the community theme of use.
Would be nice to se options for different types of families.
It would be great to have a playground and splash park in this area of the city. The neighbourhood has many young kids who would benefit from this.
An inclusive playground
<b>Community Garden</b>
There is a community garden in the space which seems to be very popular and I suggest to continue that but add a community orchard area.
Community gardens are important.

It's not a huge area. Keep it a more natural park with the community garden and education opportunities.
I am really hoping you keep the community garden as it has been a fixture for us for many years. It provides people with opportunity to connect with the land and grow food which is so important.
Activities that create loud noise should be located away from existing homes. Community gardens or other noise free amenities could be placed along housing.
We would also love to see the community garden area for education on regenerative practices etc.
The corner of Gordon and DeHart is already noisy with traffic and it would be easy to relocate the community garden off the street and likely better for consumable produce to be away from traffic.
Maintaining community garden space
Maintain the community garden space.
Keep the community garden
<b>Dogs</b>
Dog access.
Please put an off leash dog park here. There are so many Dog owners in our neighbourhood with no dog park in walkable distance. The area would be ideal for a youth mountain bike park as well as a water park area for young children and a small skate board park for youth. We really don't need more basketball courts as there are lots of schools around with that nor do we need a play park with swings as local schools provide that as well already. It would also be ideal to keep the community garden area if possible too. And we need garbage and recycling bins there please!
Dog park is important.
Off leash dog area with separate large dog and small dog areas with shade trees
I think it's important to make any dog run a safe dog space, dog parks that are too small can cause dog fights to break out and be a danger to enter - for both people and dogs.
I think it is also important that there be a separate small dog space as well.
Also strongly feel a fenced in area for a dog park would be an amazing addition to the area! Thank you for seeking feedback from locals :)
Currently, the open field is often used by people walking their dogs. A dog run or small dog park would be well utilized!
Please create a park that is dog friendly - meaning not just providing a dirt pit for the dogs to run around in, but instead, make it a progressive and integrative park for humans and dogs. We all need exercise and walking, jogging, and running with a dog is a great way to get active. It is sad to see so many parks in the Okanagan with "no dogs allowed" and "dogs on leash only" signage. Our pets are our family too - when they aren't welcome neither are we.
A dog park that is made for large dogs. Rowcliffe park is only good for small dogs. Also fenced fully for everyone's safety. Lots of trees for shade and to help create an ecosystem. We don't need turf. That's what the ball fields are for at H2o.
dog free park
This park absolutely MUST be dog friendly and I do not mean just a fenced off leash park. Leave the off leash fenced dog park to H2o. I have an elderly dog and I just want to have a quiet, peaceful, grass and trail area where we he can walk, sniff etc on leash. I live on Hobson Crescent and there are no green spaces in this neighborhood that allow dogs.
I would love the community park to be dog friendly and contribute to the feeling of community by holding small events. I would much much rather be able to walk my dog on the trails/paths than have a dog park
Dogs should be allowed in park. The vast majority of people I see in the field are walking their dogs. I back onto the field & have two dogs myself, so use to walk my dogs in the field are of utmost importance to the people who will continue to use this space. At any given moment when I look into the field, there is usually at least one person with a dog... Or occasionally I'll see someone with tennis racquets walking to the tennis courts... Where else will they go if dogs are restricted from the park? I don't believe in dog runs or fenced in off leash areas, they are usually too small and often have dogs that don't behave well with others, so I personally wouldn't use it. And there's one already not too far away by Mission Creek & H2O.
Off-leash dog park
Please consider making Dehart Park welcoming to dogs on leash. Not all dogs like an off leash dog run and there are already many of those in Kelowna. The parks in Kelowna are so well cared for and we would love to enjoy them more with our small, timid dog on leash. However, so many parks don't allow dogs even on-leash. We would love a green space to walk our dog on paths and allow her to sniff some grass.
Dog friendly throughout the park.
On-leash dog trails
Again dog run. Mission Park is very busy. Excellent idea to create novice bike area. Many youth in the area involved in biking and enjoy the dirt jumps etc.
More dog parks for the Mission! There are only two off leash dog parks at present, cedar creek and mission recreation park. Neither are walkable for most of the mission.
A nice dog park for small dogs.
With grass & not dirt. Benches & obstacles course for dogs to run & play. Water station. I would like to see an up scale dog park.
A large area for dogplay would be good. The only other place with that amenity is near Cedar Creek and it's too far to walk.
Start with a fenced dog area
Maintain green space for walking and pets (there are so few dog-friendly areas in Kelowna),
New off-leash dog area the 2 in the mission are very crowded Dogs need to run
Can an open meadow/sports field and dog run park co-exist without crossing over into each other? If you can keep them separate great ... cause I do understand the need for dog owners to have somewhere to take their dogs.
A dog friendly section
<b>Natural features &amp; Environment</b>

Wildlife. Bat friendly lighting. Native trees and shrubs that provide food for native birds, squirrels, etc. There are lots of deer in the area to help with pruning. Pollinator friendly. Also being mindful of water usage for large lawn areas. At the same time a somewhat natural water feature would be nice.
Preservation and enhancement of natural habitats, diverse range of native plants and trees; dogs on-leash with dog waste bins/collection separate from garbage (see: City of Vancouver dog waste collection program)
Shade and water features are the most important feature - a community park is not useful if it's too hot to enjoy it, and it will only get hotter every year with the planet warming.
This land is a perfect opportunity to return back to its natural habitat as a reflective and respectful environment.
Re-Wilding - a Park where the natural environment takes precedence with soft surface, peaceful trails for walking with and without dogs.
Increased plant diversity
The natural trees and vegetation should be preserved as part of the natural beauty of the location.
Maintain the wildness feeling of the park, similar to the Greenway. Don't make it too "planned"
The enjoyment of and access to natural beauty should be just as important as social activities although both are necessary for a good community.
Keep the space as natural and green as possible.
Keeping as much green space as possible; this is a unique opportunity to maintain green space in an area where development footprint is quickly growing.
Enhancing public green space, making it available to multiple ages and abilities. Maintain natural vegetation as much as possible.
Mature trees and the opportunity to plant more trees/shrubs, is very important.
Try not to be everything for everyone. Simple green space is good.
Leaving it as natural as possible is important.
Climate Change
As mentioned in previous comment, shade, canopy cover.
Keeping the mature trees and adding more would also be excellent.
More trees and flowers for bees
<b>Noise &amp; Safety</b>
Pickleball courts! Redo dehart road to make it safe for pedestrians and cyclists. The left turn lane onto lakeshore is a congestion area and should be included in the road plan.
Parking along Sherwood St is already very busy by town homes. Children walking to AME and OKM have no sidewalks in this area and must navigate this traffic including parent drop off traffic. More cars parked on the streets by Sherwood to access the park would make the streets more dangerous.
Slowing down the traffic on dehart road!!!!
I cannot stress enough that for families like mine with young kids, we're happy to ride with them on separated paths like nearby on Pandosy, but being within wobbling distance of cars going 60km/h is an instant deal-breaker.
Limiting opportunities for illegal homeless encampments.
Speed control around the park
Good lighting in the evening to make it a safe area to enjoy in the evenings
Adequate lighting to enjoy the park in the evening hours.
What is there now works for me. Some lighting would be welcomed
Lighting, gates, cameras and fencing that will prohibit camping on site.
Security
To not have bright lights and sports fields at night
Basketball court with lights
Crosswalks and slow traffic speed bumps etc for the traffic around the park streets
I also would love to see the lower mission connected by a walking & bike pathway that is in similarity of that near gyro. Where we are we are cut off and the pathway leading to the roundabout by bluebird rd is dangerous especially for kids as people always cross over the white line and speed.
Good lightening for safety
Protection from busy streets for kids
Sidewalks really need to be added. Walking anywhere around Lakeshore, Dehart and Sarsons with small children is very dangerous.
Lighting and safe environment
Lighting and safe environment
Security and proximity to neighboring properties of park elements to avoid disruption to neighboring properties.
Noise consideration. You have residential all around the area, including the development that butts up right next to the park.
Consider the noise pollution from Gordon and lakeshore when planning where to place an amphitheatre or picnic shelter. Amphitheatre should have appropriate electricity and lighting for year round events
Current placement of the "hill" for mountain bike or skateboard is right up against the fence of the housing development. This feature should be moved closer to DeHart Road as it will be a significant noise generator for the residents in that area.
Some sort of noise/sightline buffer between adjacent traffic (Gordon and De Hart) and the park itself.
Hard to achieve quiet areas when adjacent to 2 busy arterial streets. 10 year old plan was created before the funds associated with DCC park development were available. This should fundamentally change the city's approach to development of the park.
I think it's important that there are more foliage/trees/shrubs blocking the sights and sounds of the main road (Gordon), as traffic is loud and ugly.

I don't think the road adjacent parts of this park are desirable locations for 'sensory gardens' or other quiet contemplative features. IMO, such features would be better placed in quiet sheltered treed areas toward the centre of the park.
This location is situation in the midst of 3 busy roads/intersections, and as such, I believe that the main attractions for this space need to be something vibrant and lively that aligns with the realities (noise, vehicle traffic impacts) of this location.
<b>Skateboard Use</b>
Skateboard Park
Please add a skate park for our youth. There is no where for them to skate or scooter in the mission
Skateboard park for kids. Lots of lighting.
Bike / skateboard track
Skatepark is very important.
Although my children are now beyond this stage, we genuinely feel a skateboard park would be an amazing feature! As it is right now, the youth of the Mission area need to be driven all the way to Rutland or downtown Kelowna to have access to skateboarding areas. Otherwise, there are no other spaces that welcome skateboarding.
Skate park
Lower Mission needs a skatepark for the kids!!
Make it a beautiful park with beautiful flowers and greenery for all to enjoy. Do not make it a "hang out" for teenagers (ex. no skateboard park).!
A skate park could be a nice addition and/or some bike jumps. If there is a children's play area, it would be great if it was a more natural wood one, with elements that children a variety of ages would appreciate. Maybe a parkour type area that all ages would enjoy. A great example of a park that incorporates a number of these items is Penzer Park in Langley.
skate park
Please do not have a skateboard run in this park. I am 85 years old live across the road in mission villas. The noise from Gordon Ave has increased substantially in last 5 years. Further noise will be detrimental to residents. Glad to have a park but please no great extra noise.
Can you please consider a Skate Park? Currently the kids use the Community Hall parking lot and the Enclave driving area/ driveways and Sherwood. It's very popular in the warm months. It's a perfect location next to the firehall for first response and the city could consider adding an ambulance at the fire hall for added value. If the Skate Park were to be built below grade IE - a sloped hole in the ground then the noise could be mitigated, the material could be used to build a hill/ berm AND in the event that it is no longer needed it's easy to fill with dirt or flood and make a duck pond.
The Mission could really use a proper skatepark. Gives kids something healthy and active to do. Nothing too fancy (although fancy would be great!). Something simpler like Osoyoos, Oliver or Peachland. Currently I drive my 12 year old and his friends to Rutland, W. Kel or Lake country. There was a petition started last year I believe. A couple of rails is not enough and a waste of space in my opinion. Thank you.
Skate park, especially geared at teens. Being right by OKM, it would make sense for this area to serve our teens as well as our young children.
Instead of a mountain bike course, how about a skateboard park.
A skatepark would be an amazing addition as a petition we made a few years ago got over a few thousand signatures from the local community.
A skatepark would be amazing
Once again the addition of a further focus towards skate obstacles being added / an entire park
Please provide a skate plaza.
Please do not add the proposed skateboard area. Noise pollution. Anti social behaviour and vandalism would overspill into our community
Skate park and bike track
A skate park
<b>Tennis/Pickleball Courts</b>
If the present tennis courts are truly community courts they should be open free of charge for the community. They are presently dominated by the Mission tennis club. There is a pay option for citizens but even at that it is not common knowledge. Not truly public tennis courts and certainly not multi courts. A public park should be open and free to the public.
More tennis courts and allow to cover for indoor use
Pickleball courts, children's spray park, amphitheater area for local talent, public bathroom
Would love to see at least 4 Pickleball courts like the ones in Rutland by the YMCA, currently the nearest set of Pickleball courts are by the Parkinson's Rec Centre which is a long way from the Mission area
I'd love to see a pickle all court!
indoor tennis facility - either permanent or seasonal to provide tennis through the winter.
Tennis!
Tennis courts
Tennis courts
First and foremost, Pickle ball courts. And seating to watch, seating when walking
There are no pickleball courts anywhere in the south mission except for one rough shared tennis court in kettle valley.. Shame as a wealthy area
More tennis
Winter indoor tennis courts. If pickleball is added, they get their own seperate courts from tennis.
Pickle ball, pickle ball and more pickle ball. It's the fastest growing sport and our city is severely lacking in courts!!
Specifically I believe the 3 tennis courts on city land should be upgraded by resurfacing, a separate public access from the OK Mission Tennis clubhouse and also covered with a bubble for year round use. This improvement plan could be adjusted depending on the plans for

tennis at the CNC site on Gordon Drive. Regardless, a comprehensive tennis and/or court sport plan should be developed for Lower Mission that results in a complementary outcome for the 2 locations.
If there are six tennis courts being built at the Mission Rec Centre then I don't think that this area should be developed for recreation. Please explain what flexible spacing means.
There are currently no public tennis courts in the neighbourhood, and there should be.
If additional tennis courts or tennis bubble is not part of the development of DeHart Community Park, then providing them elsewhere in the City is important.
PICKLEBALL! 🏓
The is only one tennis/pickleball court available (free) to the public in the entire Mission. Please consider adding some to this park.
Again, the fact that there are so few tennis or pickleball courts in the Mission area.
Pickleball courts
tennis courts
Dedicated Pickleball courts.
Pickleball courts would a great addition
Opportunity to expand existing court facility to meet the future and current needs of the community!
Second priority would be additional public tennis courts or other family friendly recreational amenities. Selection could be based on a citizen survey of options.
Pickleball courts at least 4.
build pickle ball courts
Tennis and pickle ball courts for public use, basketball courts, walking trails, benches and kids park area.
Be different than existing sports facilities within 1 km radius. Already have courts, large fields in school yards and cnc
Pickleball courts
<b>General Recreation/Amenities</b>
Can there be coin operated electric barbecues for public use
lacrosse box
Complement existing amenities at Mission Recreation Park (e.g. need a true park, not more sport facilities)
An indigenous theme water feature as our summers in Kelowna are becoming increasingly hot so it could be place where children and adults could find relief from the heat in a fun interactive way. If it also had the ability to recycle the water for vegetation or toilets that would be more sustainable.
Would be good if this was a local location where the City could run exercise and recreation classes
Baseball diamonds, street hockey court.
Make sure that there are facilities/equipment for all ages - e.g., playground for toddlers and young children; bike course for older kids as well. Drinking fountains. Ice skating rink in the winter.
I love the idea of an outdoor venue for music in the neighborhood
Create significant winter use opportunities, and don't let the maintenance departments influence winter use because they don't want to clear snow.
Am hoping for a few ping pong tables like the ones at Gyro!
Put in a simple outdoor pool like burnaby Central Park ;)
A public outdoor pool or a water park with sprinklers similar to city park.
As mentioned earlier basketball courts are the most important. Checkout the Ice Age playground and basketball courts in Spokane WA. This is precisely how I think the park should come together. The basketball courts have league play when the weather is nice enough with stands. Huge community gathering place. The playground is a huge attraction as well.
universal design - features accessible to community members of all abilities and ages +18
I think an outdoor waterpark with under cover picnic tables for all families to enjoy together.
Sport court should be able to convert to ice rink
Basketball court and football/ soccer field would be nice.
A space to enjoy outside, I imagine where families can play and picnic, a live music raised space with electric for theatre rival entertainment on occasion but mostly to go somewhere that's not at home. An occasional natural environment
Amenities should be complementary to those already on offer at adjacent schools. For example, playground equipment and basketball hoops are readily available locally. Unique amenities like pickleball or volleyball courts would be preferable. The novice mountain bike course is important because many neighborhood kids have already been using the park for this purpose.
Water fountain
Bathrooms are the biggest thing! It's a far walk from my home and there aren't any bathroom options nearby.
A dedicated area for outdoor yoga & other similar activities, partly shaded or covered
Outdoor classroom/learning opportunities
Adding disc golf baskets
Set up for a weekly farmer's market. Also good to have infrastructure to support weekly community meals. Would work well to be the same night as farmer's markets. Access to a kitchen to be run by community volunteers. An outdoor fire burning oven - can bake bread to sell at farmer's market or make pizzas for community meal.
Two keys: washrooms, and concession (could be provision for a food truck). Being able to grab a coffee while strolling the trails and gardens would be great!
Disc golf
A small area for a small disc golf course

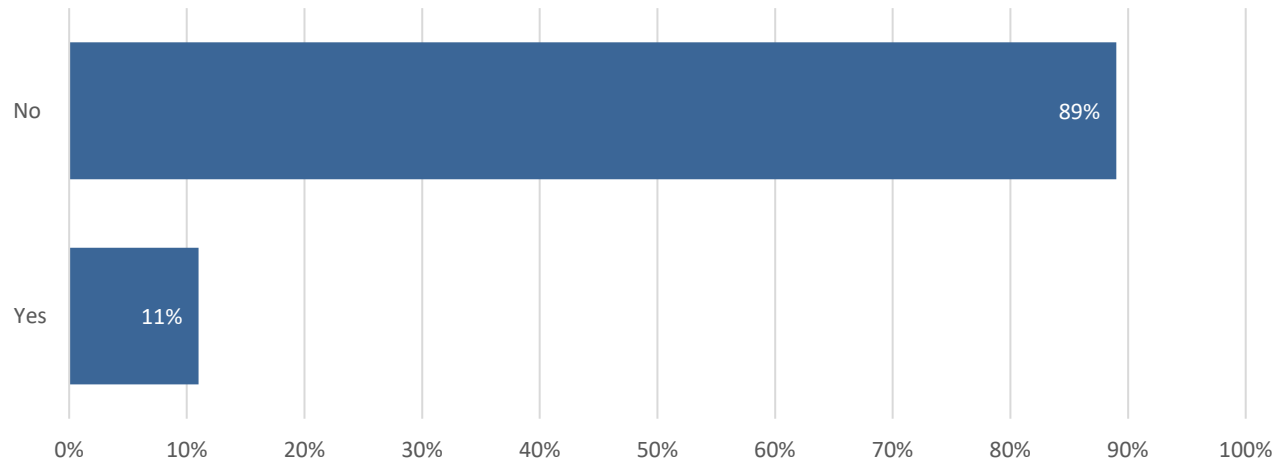
Kelowna has one of the lowest basketball courts per capita in Canada!
A pond
It would be great to have a water park like Quilchena Park and Ben Lee Park.
it would be great to have public courts, outdoor performance space, etc at this park
No one uses the fitness machines expensive and have to be maintained.
Other
What is going to draw the neighborhood to this park
I'd like to see some of the longtime family's from the area's past be honored in some way, such as the Reid's or Horak's who were across the street for many decades. Maybe in the names of the walking paths or?
A great and comprehensive list above
Try not to make it too busy, simplicity is best.
Cleaning up the interface between the park and Dehart Road.
The budget and whether the future amenities will actually be used. It seems Kelowna is taking away natural green spaces and spending a lot of money on unnecessary improvements. I see so many playgrounds rarely being used and I worry about attracting either homeless or criminal activity to our area.
Cost - balance the \$\$ and what's reasonable.
Enhance entrance to Community garden so it is an attractive feature at it's current location
Make sure it's maintained, garbages emptied on regular basis, bathrooms are well lit and kept clean
Connect with Okanagan Mission Community Hall and an access from Lakeshore.
FYI, it's not a park today, it's an empty unmaintained lot with no reason to visit it.
These options weren't very specific. What is a youth activity area as compared to a children's play area? I don't know what a green amphitheater is.
Re Name the Park. DeHart surname is the Name of a Councilors X husband So City promoting X partners how will you explain that History? Why not Father Pandosy.
I visited in the Reid house on DeHart Road many times back in the late 70's and early 80's. Myrtie and Wilber Reid owned the House and the land that this park is on. They were a lovely couple and I thought that they had donated this land to the City. I think it is important that there be signage in the park acknowledging the Reid's. I would suggest the park be called DeHart-Reid Park!
I am not sure but I believe that the Reid Family donated this land or gave it to the city at a very good cost so think that some recognition should be considered in the naming of the park.
I would hope that a massive amount of money would not be poured into this park only to discover no one is using it. Maybe start off with less with the capability to add more as time goes on and perhaps as people request.
That's a lot of stuff, I think you all are on the right path!
Winter Activity - Outdoor Rink
I think they need to consider where this park should actually be built, being that the mission has H2O and lots of park space and more than one dog park, whereas Rutland could use a green amphitheater and a new dog park. Rutland is majorly lacking in community garden space and the community in Rutland is far more active with events that building an Amphitheater in the Mission first, only says that is being done because they have more money and once again Rutland is left looking rough and a backburner concern for the City and City Council members. As well with the huge new upgrade to Parkinson Rec that is planned and H2O built not that long ago, Rutland could use some major upgrades at the YMCA and a new dog park.



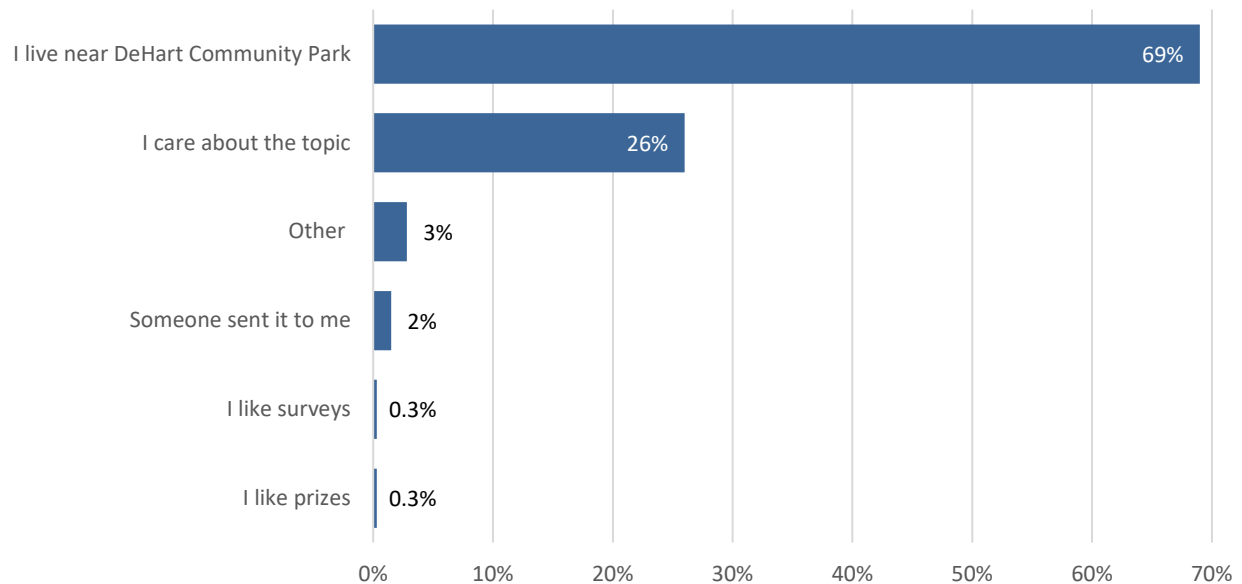
## Engagement

---

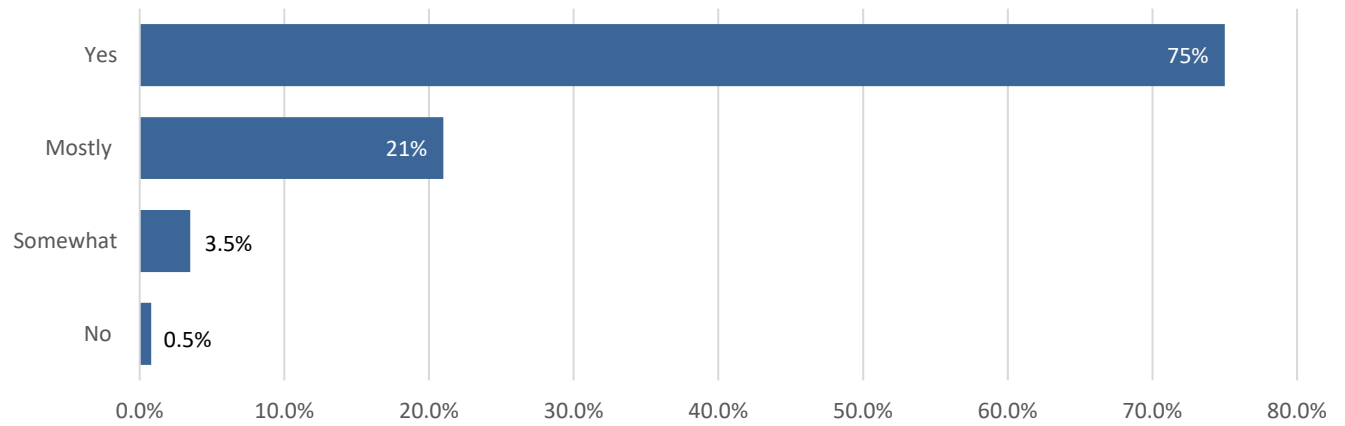
Did you participate in the 2009-10 DeHart Community Park Public Consultation?



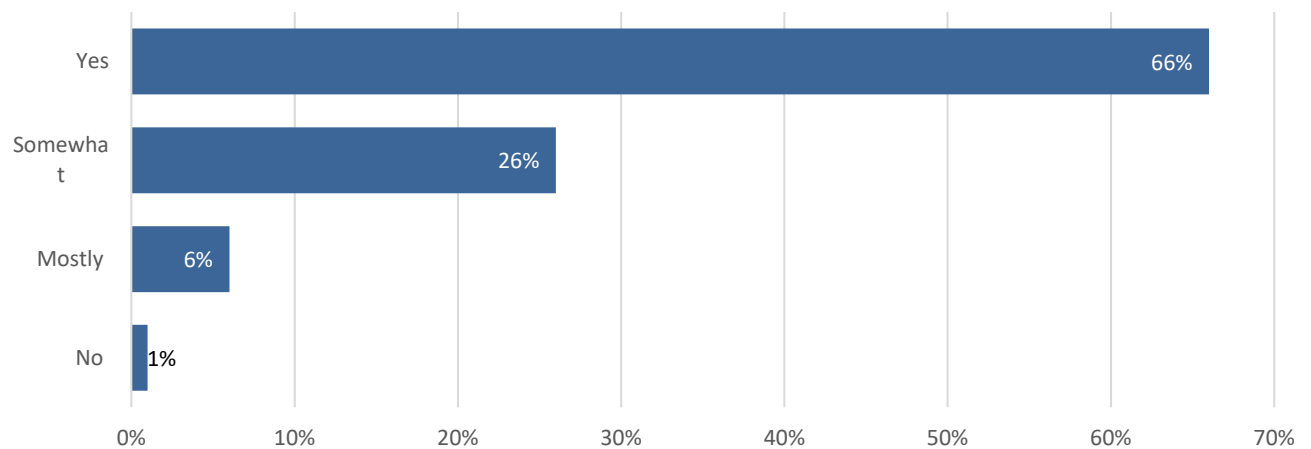
Why did you participate in the survey?



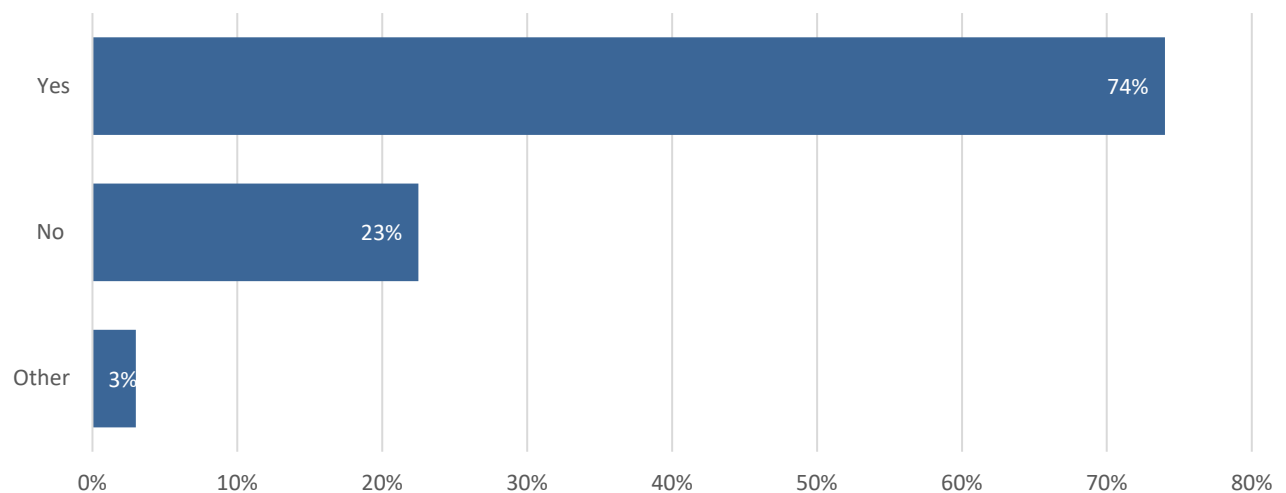
### Was the information easy to understand?



### Did you have enough information to participate in a meaningful way?

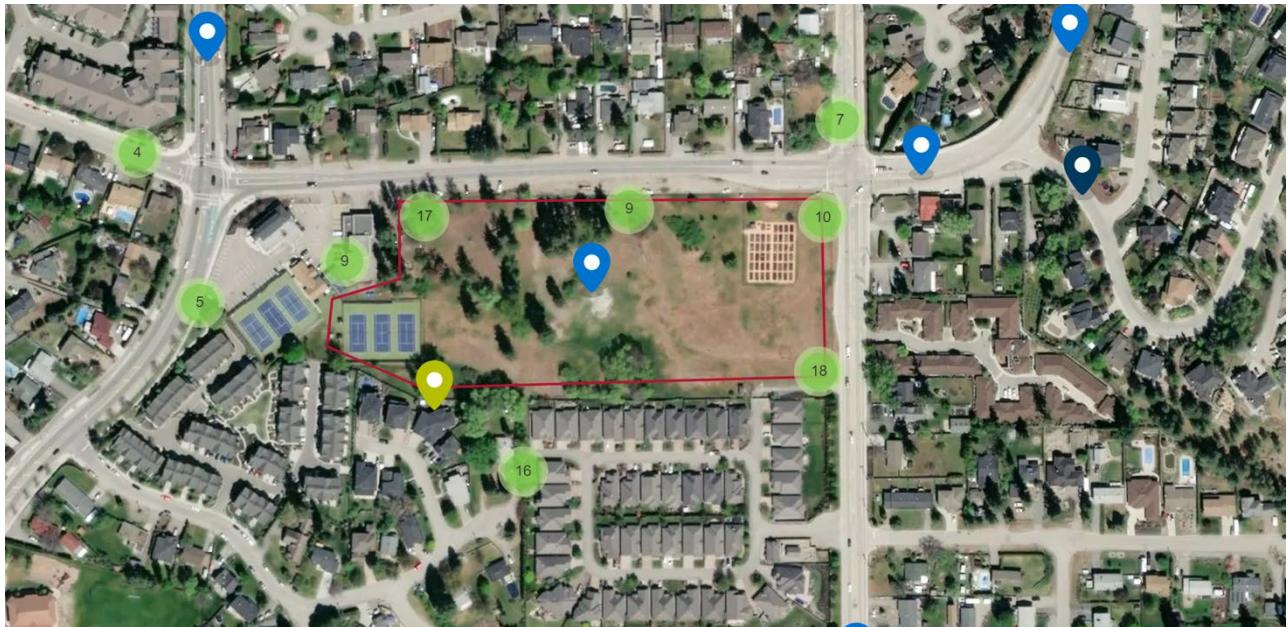


### Do you understand how your input is being used?



## Get Involved Engagement Map

A DeHart Community Park page was launched on Get Involved Kelowna, the City's public engagement platform on October 18, 2022. Visitors to the site were able to submit feedback through an interactive map. Between October 18 and November 20, 2022, the map had a total of 516 visitors, 108 contributors, and 117 contributions. The image below shows the location of all of the responses received during this time.



*The following table includes unedited map responses, grouped by category.*

<b>Access &amp; Use (Bikes)</b>
Coming by e-bike in good weather and car in winter/rain
I come down from Westpoint Dr with a kid or two on the back of my bike.
Make sure there is a safe bike lane on DeHart Rd.
Also use bike to access tennis courts
We drive to the park with our bikes and park there, then go for a bike ride. It would be great to finish our ride at a nice park.
<b>Access &amp; Use (Pedestrians)</b>
Walking path
We walk this path from Sherwood Rd to get to the park. It would be great for it to be lit, re-paved and safe for access for users of all abilities.
I would walk to the park. It would be great to have a safe side walk or multiuse pathway from lakeshore road to here.
This is our closest access point if arriving at the park on foot.
There are no side walks on either side of DeHart, so I cut through the community centre and fire hall parking lot to enter the park.
Walking across busy road. Crosswalk is too far.
I would walk down Lakeshore and enter as close to Lakeshore and DeHart.
There should be bike lanes and sidewalks. Please add a crosswalk halfway between Gordon and Lakeshore. Add pedestrian controlled lights.
Popular with dog walkers
An entrance and walking path from near the tennis courts would be great.
<b>Access &amp; Use (Pedestrians &amp; Bikes)</b>
Two seniors biking and walking.
Driving, walking or biking from this direction
I access this park from all five corners (NE, SE, SW, W (tennis courts), NW, by walking or cycling. A direct route should be provided East-West directly adjacent Dehart for kids to access schools. Dehart is currently dangerous for cyclists.
Walking or biking from my condo. It would be lovely to have a location so close to home to visit and enjoy with friends and family. I live alone.
A safe a viable option for a ATC connection from the Gordon/ mission creek corridor to lakeshore/kettle valley
<b>Access (Vehicles)</b>

Coming from Upper Mission in car
I drive past this area from the North on Gordon so would likely approach from this spot in a vehicle.
<b>Recreation &amp; Amenities</b>
We love having a range of playgrounds to go to with our primary school aged children. Ones that have a playground as well as a paved path for scooting, as well as a washroom, are our favourites.
Would love to see additional green space here, native trees and plants, providing important habitat for native species and helping the city meet its climate targets. At the same time, being a place for locals to enjoy and learn what we can do in our own yards. Recently learned about the concept of Miyawaki pocket forests - perhaps something to look at here.
Great place for more green space.
<b>General</b>
I live close
access from behind the tennis courts and firehall
Coming from Kettle Valley, I would turn right off Lakeshore and onto DeHart then a quick right just past the firehall.
We back into the park with a gate
Coming down Gordon
Best route for me to arrive and am in this area often from this route
Finally! Looking forward to it