

Connecting Our Region Let's Talk Transportation!



Do you travel across the region for work, to visit family or to access services?

Transportation across the region provides a vital connection to jobs, health care, education, recreation, shopping, emergency services and family and friends.

Better regional transportation can mean a stronger economy and quality of life and an improved environment.

Add your voice to the Central Okanagan's first Regional Transportation Plan and the Okanagan Gateway Transportation Study.



Connecting Our Region

Let's Talk Transportation!



Our first region-wide Transportation Plan

By 2040, population in the Central Okanagan is expected to increase by nearly 40% — that's almost 77,000 new residents.

The Regional Transportation Plan will identify the regional transportation investments that will be needed over the next 20 years.

These investments will help keep our region moving – and help strengthen our economy and quality of life.

Working collaboratively across the region

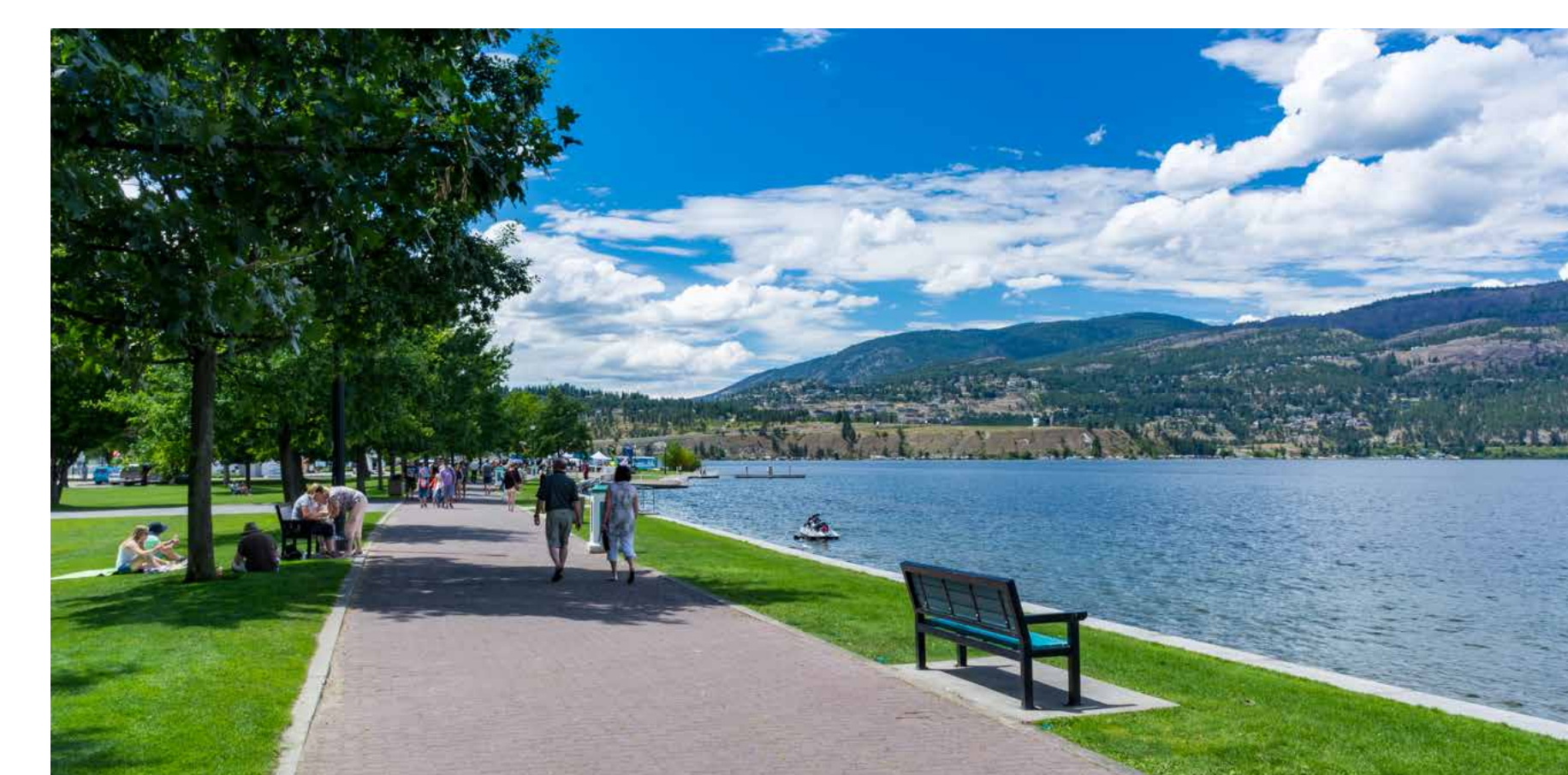
The project is led by the Sustainable Transportation Partnership of the Central Okanagan (STPCO) – a collaboration of:

- City of Kelowna
- City of West Kelowna
- District of Lake Country
- District of Peachland
- Westbank First Nation
- Regional District of the Central Okanagan



Regional Transportation Plan Vision:

“A transportation system that connects people to regional destinations within the Central Okanagan and beyond, supporting and enhancing the region's economy, social networks, and natural ecosystem.”



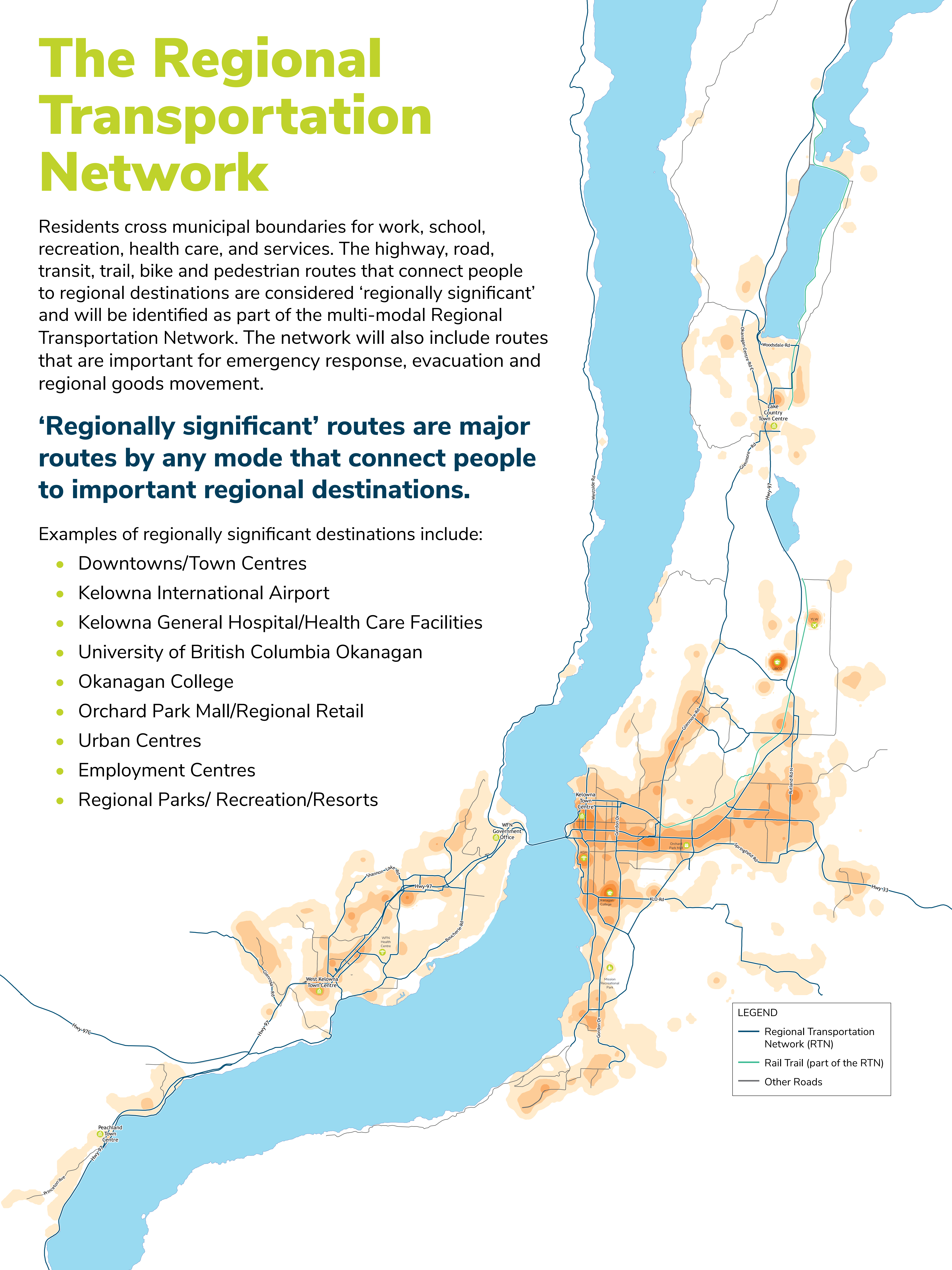
The Regional Transportation Network

Residents cross municipal boundaries for work, school, recreation, health care, and services. The highway, road, transit, trail, bike and pedestrian routes that connect people to regional destinations are considered 'regionally significant' and will be identified as part of the multi-modal Regional Transportation Network. The network will also include routes that are important for emergency response, evacuation and regional goods movement.

'Regionally significant' routes are major routes by any mode that connect people to important regional destinations.

Examples of regionally significant destinations include:

- Downtowns/Town Centres
- Kelowna International Airport
- Kelowna General Hospital/Health Care Facilities
- University of British Columbia Okanagan
- Okanagan College
- Orchard Park Mall/Regional Retail
- Urban Centres
- Employment Centres
- Regional Parks/ Recreation/Resorts





Connecting Our Region

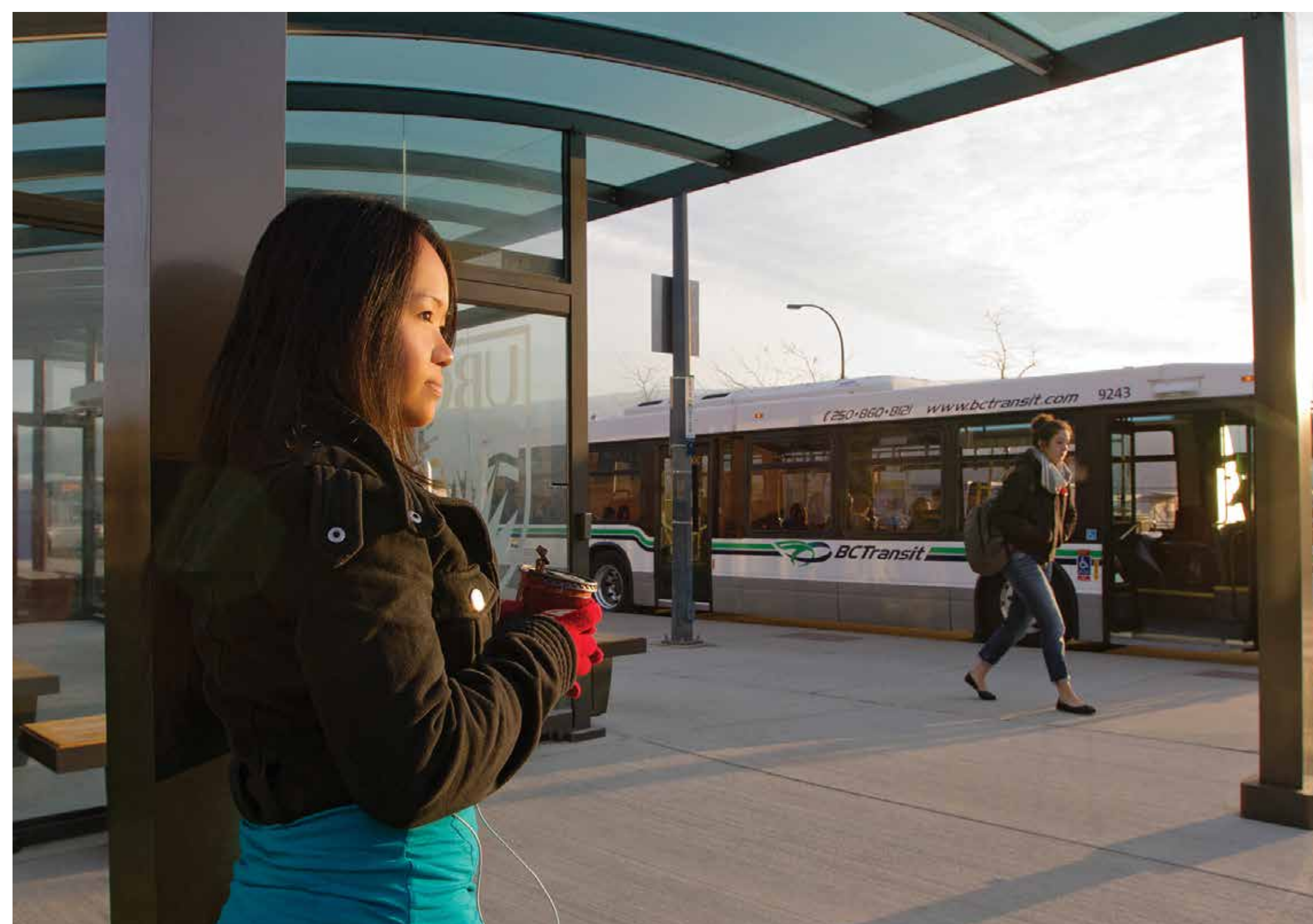
Let's Talk Transportation!

The Okanagan Gateway Transportation Study will:

- Improve connections to, from and through the Kelowna International Airport, the University of British Columbia Okanagan and surrounding areas
- Support the vision of the Airport, University and surrounding area as a vibrant, livable and connected hub that benefits the whole region
- Define future projects, programs and policies that will strengthen the economy and quality of life – and further our commitment to climate action in the region

Working together to ensure all interests are considered

The Okanagan Gateway Transportation Study is being developed as a partnership between the Kelowna International Airport, City of Kelowna, University of British Columbia Okanagan and the Ministry of Transportation and Infrastructure.





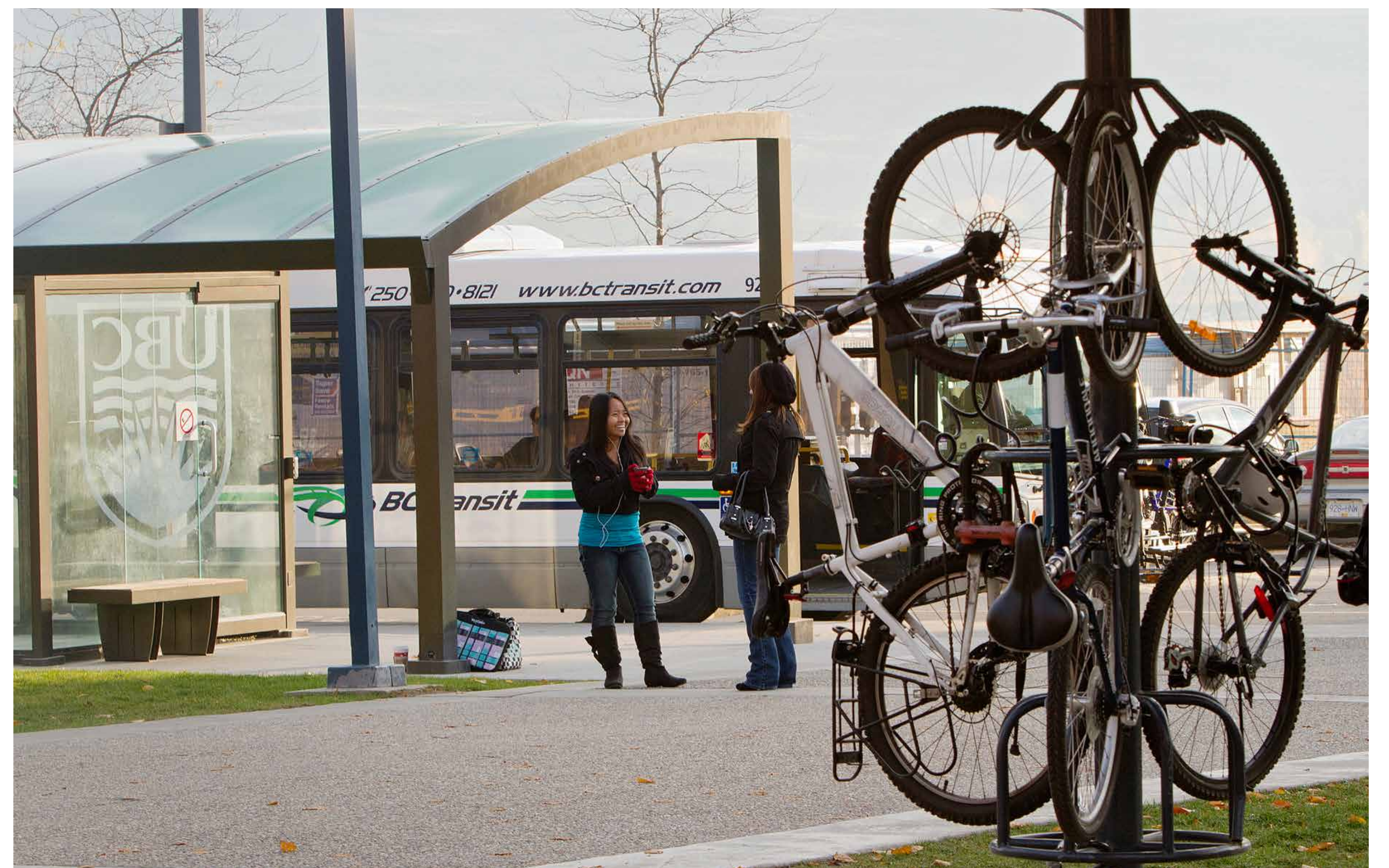
Connecting Our Region

Let's Talk Transportation!

The Okanagan Gateway

The Okanagan Gateway is an important and growing area of the region. It is home to the Airport and the University which will continue to expand significantly over the next 20 years. It provides the region with a vital connection to jobs, travel, innovation, recreation and education.

The Okanagan Gateway Transportation Study will support growth consistent with the vision of the airport, university and surrounding areas as a vibrant, livable and connected hub that benefits the whole region.



Kelowna International Airport (YLW)

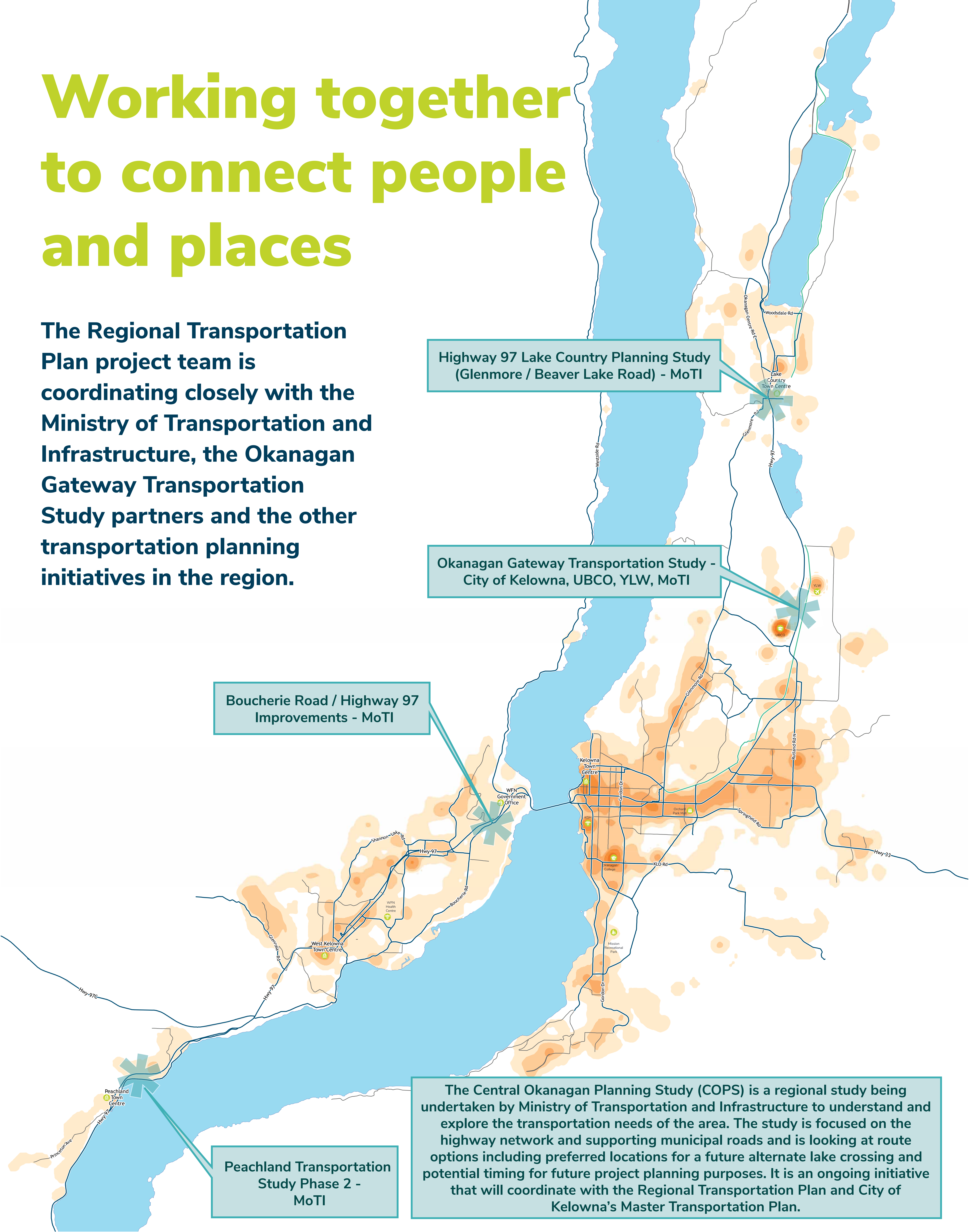
- Is the second busiest airport in British Columbia, and continues to grow
- Accommodates over 2 million passengers each year
- Supports more than 1,500 full-time equivalent jobs (airport and tenants)

University of British Columbia Okanagan

- Is the largest post-secondary institution in the British Columbia interior
- Has doubled its student population in the last decade
- Has more than 11,000 students, faculty and staff

Working together to connect people and places

The Regional Transportation Plan project team is coordinating closely with the Ministry of Transportation and Infrastructure, the Okanagan Gateway Transportation Study partners and the other transportation planning initiatives in the region.



Highway 97 Lake Country Planning Study
(Glenmore / Beaver Lake Road) - MoTI

Okanagan Gateway Transportation Study -
City of Kelowna, UBCO, YLW, MoTI

Boucherie Road / Highway 97
Improvements - MoTI

Peachland Transportation
Study Phase 2 -
MoTI

The Central Okanagan Planning Study (COPS) is a regional study being undertaken by Ministry of Transportation and Infrastructure to understand and explore the transportation needs of the area. The study is focused on the highway network and supporting municipal roads and is looking at route options including preferred locations for a future alternate lake crossing and potential timing for future project planning purposes. It is an ongoing initiative that will coordinate with the Regional Transportation Plan and City of Kelowna's Master Transportation Plan.



Ministry of
Transportation
and Infrastructure

THE UNIVERSITY
OF BRITISH COLUMBIA



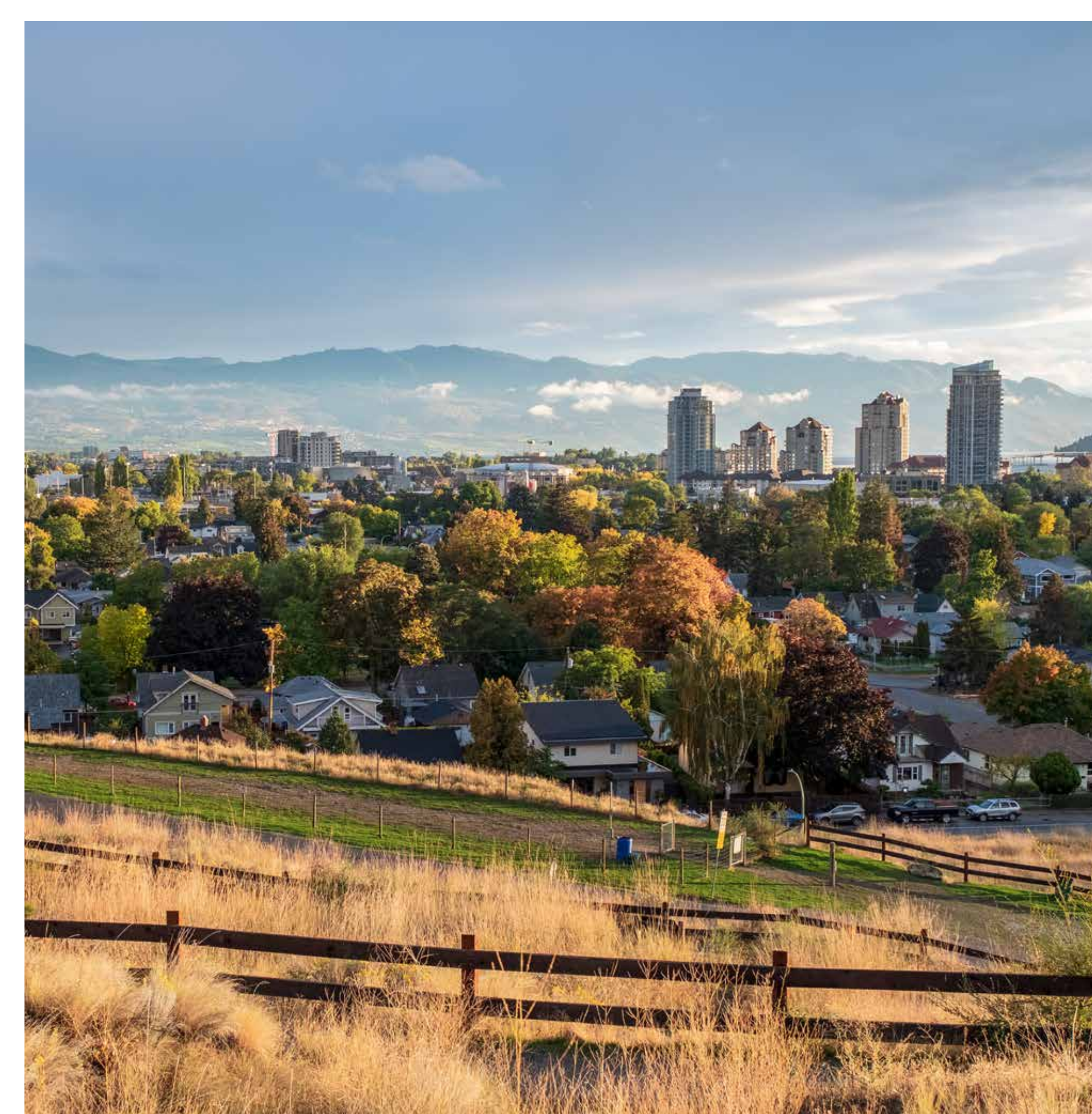
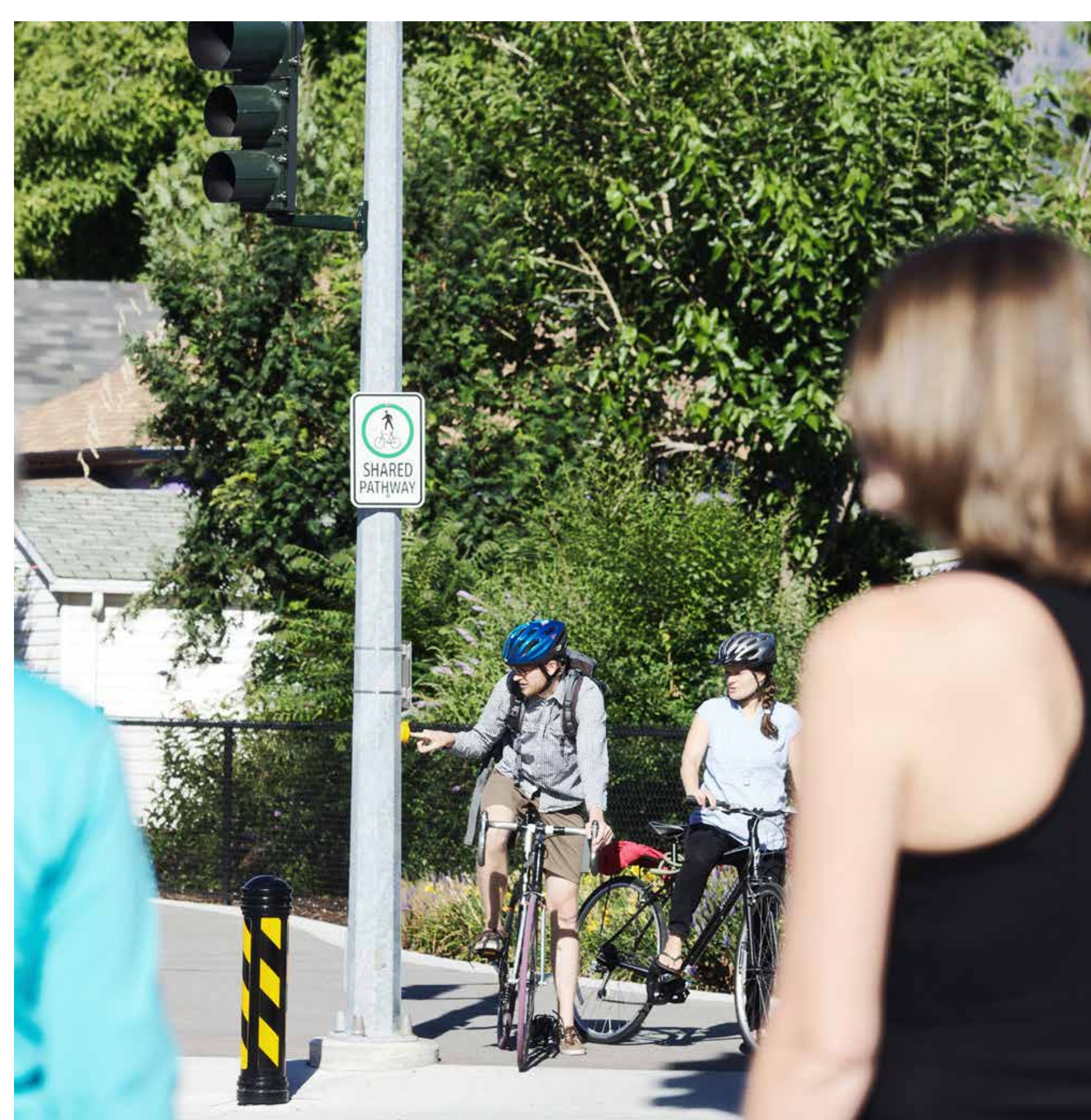
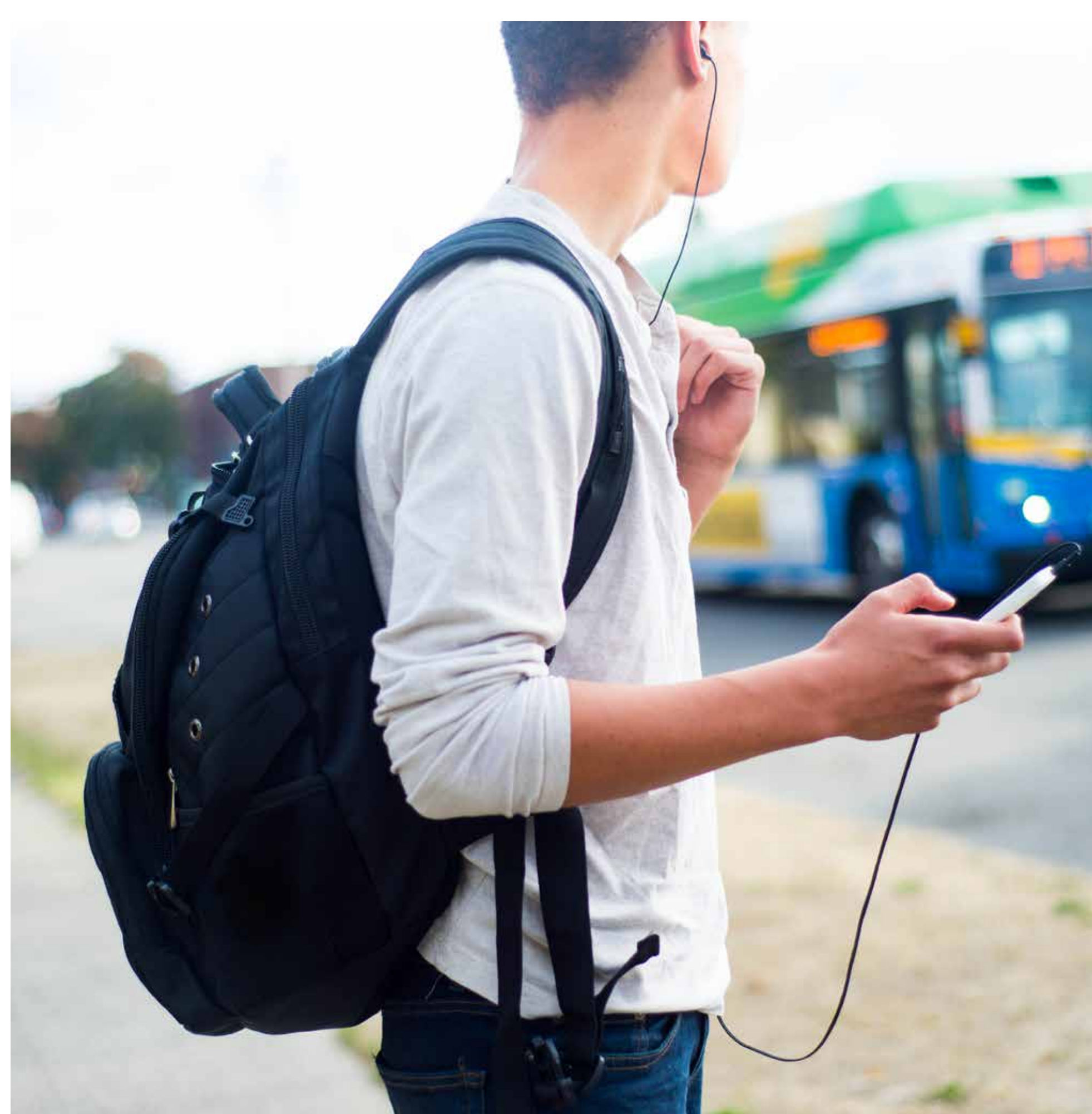
Connecting Our Region

Let's Talk Transportation!



How can we make transportation work for people, the economy and the environment?

Projects, programs and policies under consideration generally fall into the following themes or categories:



Transit:

- Enhanced/more frequent service
- Higher order transit (full or partial separation from auto traffic)
- Options to help people get to and from transit
- Park and rides
- Integrated fare payment (one fee, multiple modes)
- Integrated trip planning apps (one app integrates multiple modes of travel)

Active Transportation:

- Separated bike lanes
- Connected networks
- Bike share and other shared mobility options
- Safe routes to school programs

Land Use:

- 'Satellite' health care, education and civic services in each community (this will reduce the need to travel)
- Land use policy that brings people closer to activities and services (this will reduce the need to travel)

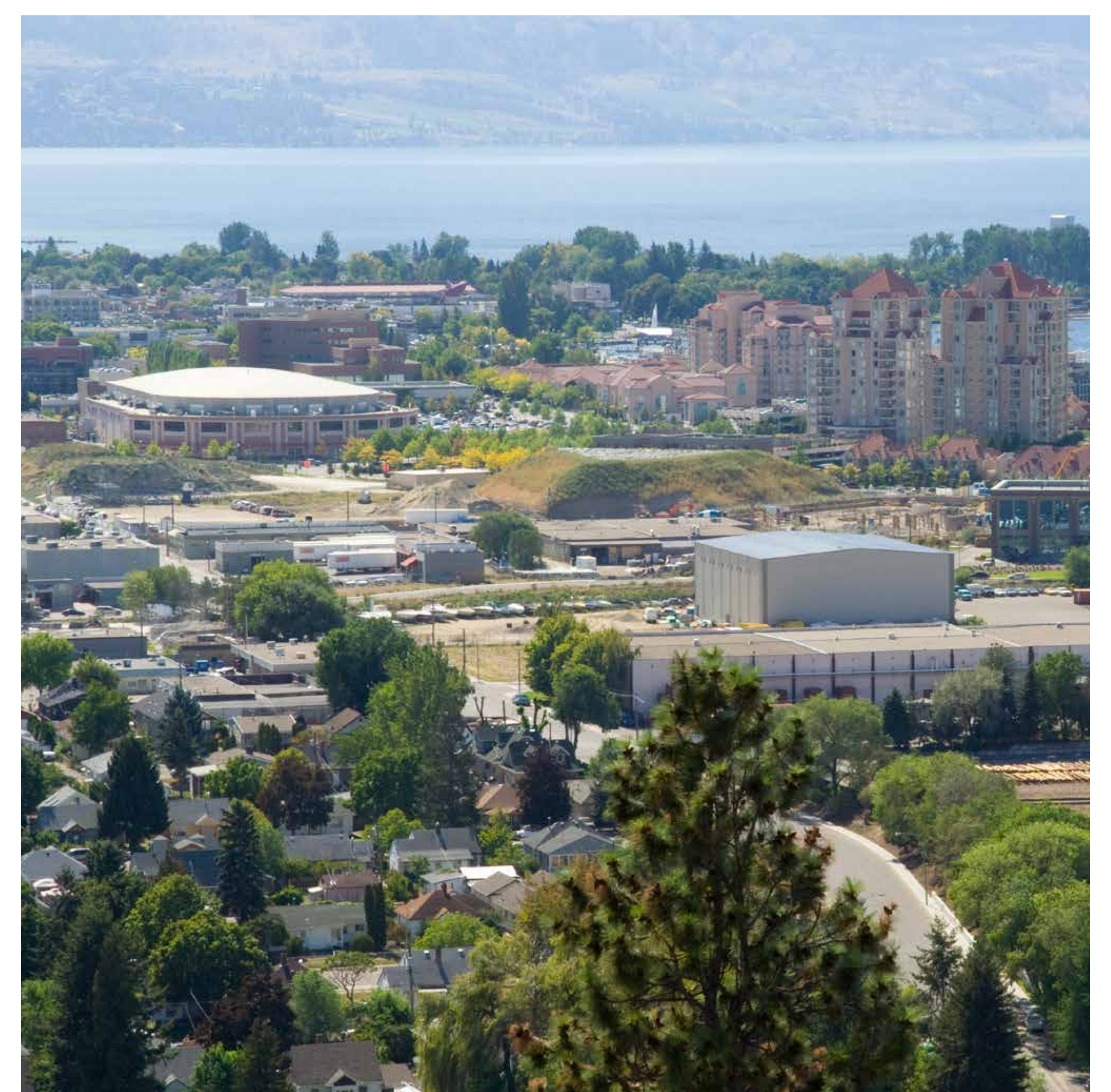
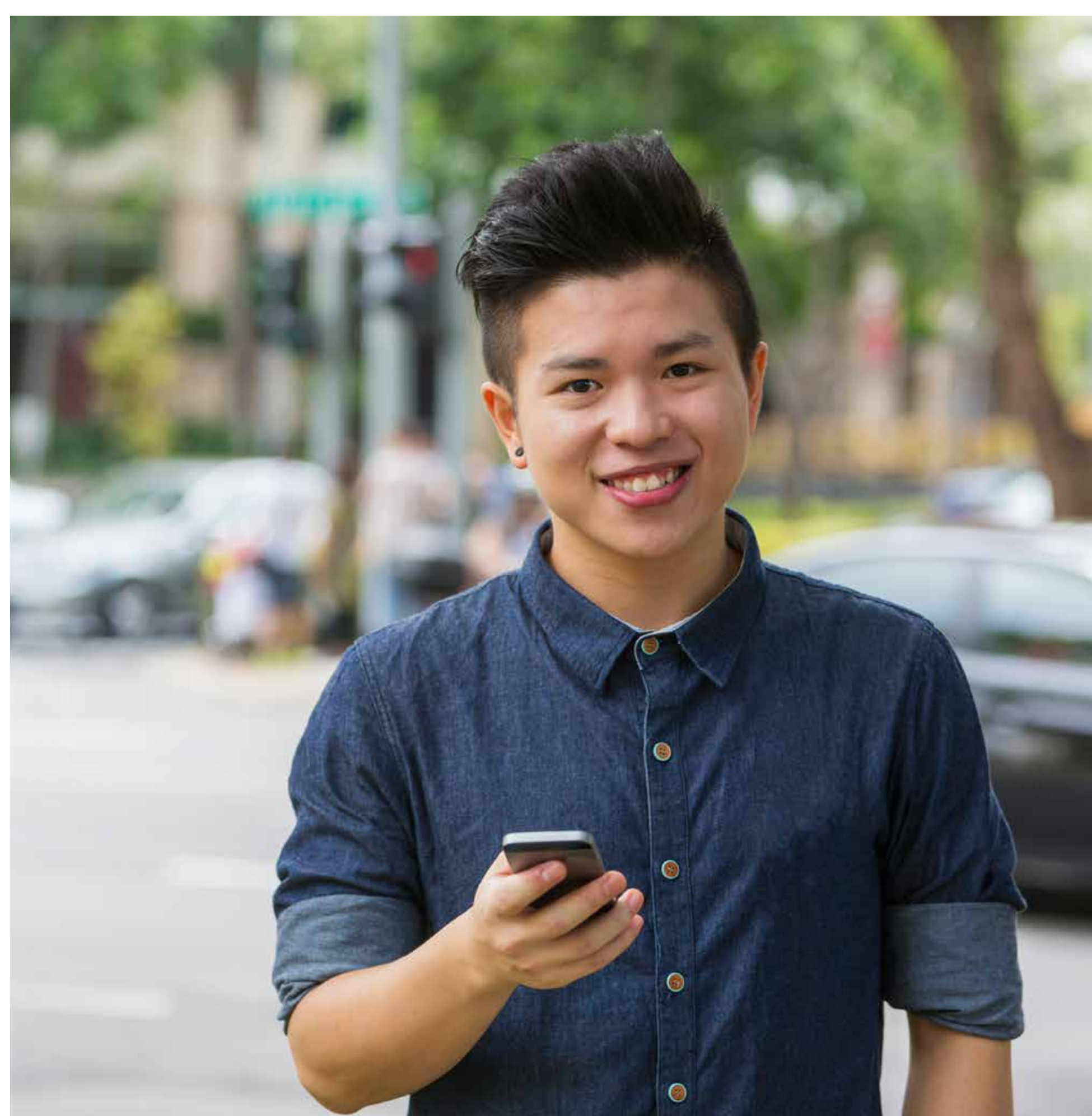
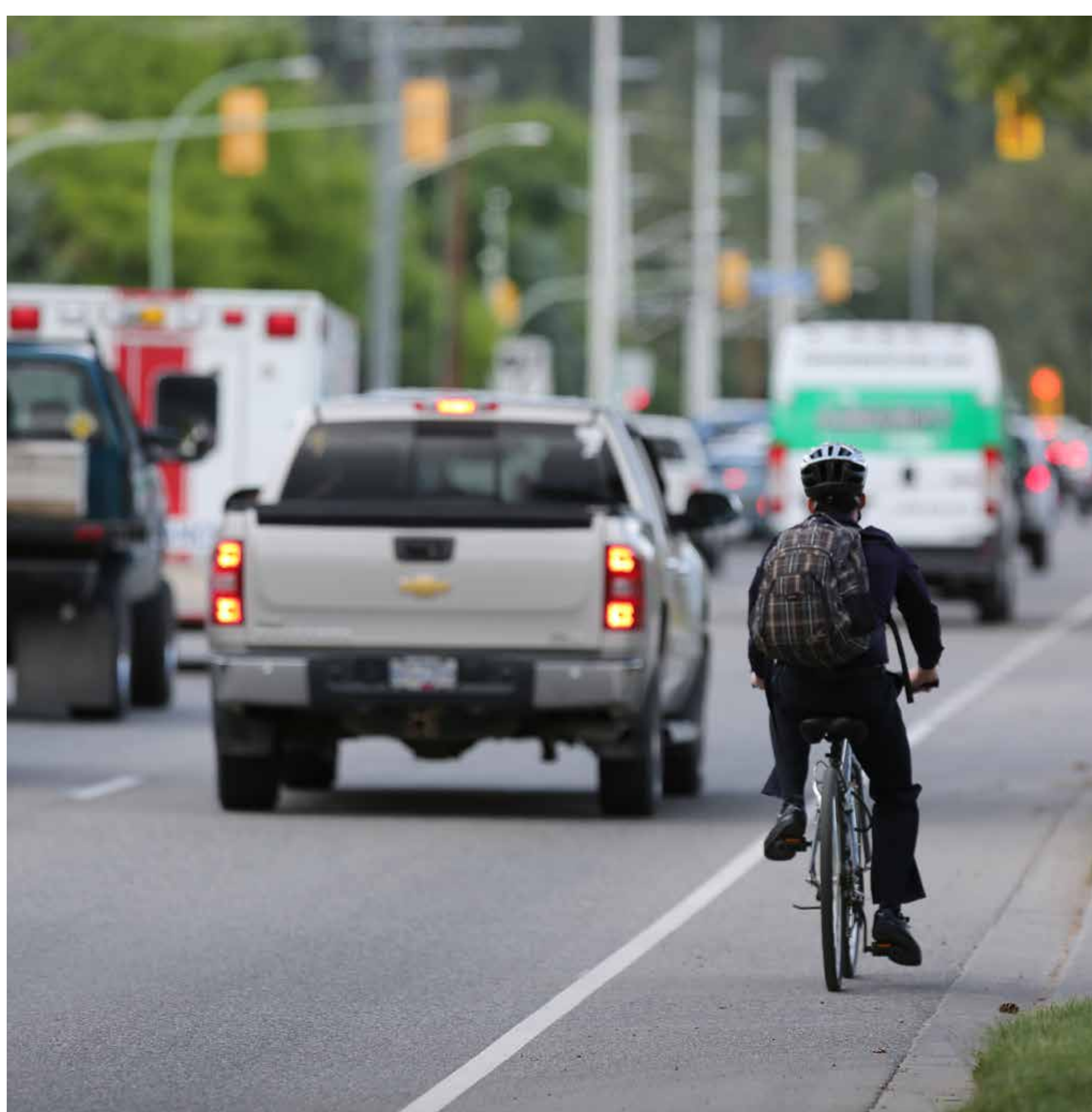
Examples are not exhaustive

Connecting Our Region

Let's Talk Transportation!

How can we make transportation work for people, the economy and the environment?

Projects, programs and policies under consideration generally fall into the following themes or categories:



Travel Demand Management:

- Employee commute programs/incentives
- Co-working/telecommuting
- Parking supply and pricing
- Regional development assessments
- Offset hour of work incentives

Vehicle Efficiency:

- Car share programs
- Ride-hailing (e.g. Uber, Lyft)
- Connected networks
- Focus on congested locations
- Managed lanes
- Pricing strategies

Partnerships

- Working with School District 23 and Kelowna General Hospital to explore targeted mobility solutions (for example, car sharing or community shuttles)
- Partnering with large employers and schools to refresh and expand commute programs and incentives (for example, transit passes, bike parking, showers and lockers)
- Encouraging large employers and ski and golf resorts to work together with the airport to identify and test innovative ground travel connections

Examples are not exhaustive




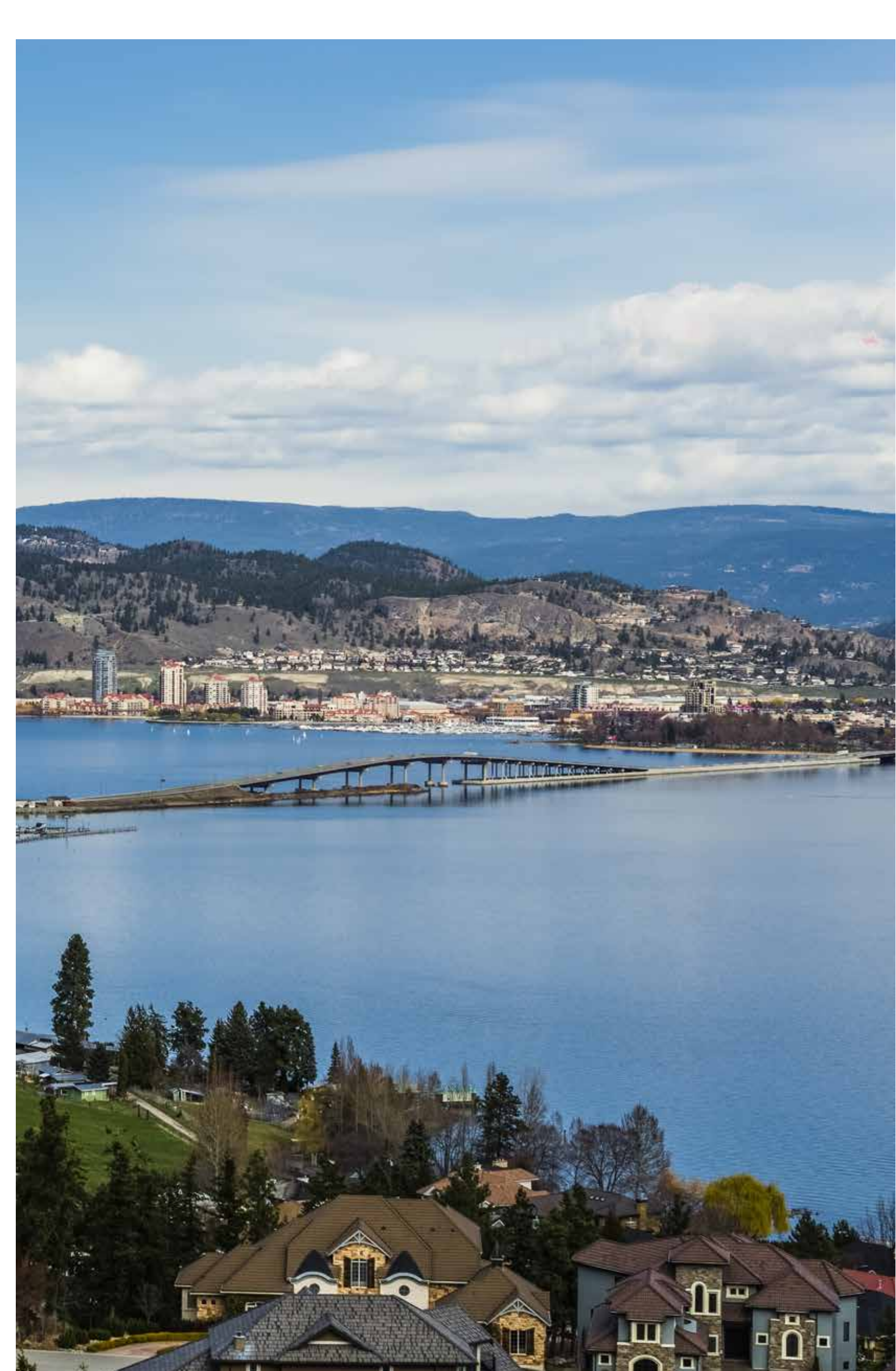
Connecting Our Region

Let's Talk Transportation!

What are your ideas for the following geographic areas?

We want to hear about the projects, programs and policies you think will make the biggest difference for your quality of life, the economy and the environment.

What are your ideas for the following geographic areas?

	<div>Connecting Peachland and beyond</div> <div>Peachland residents need better connections north to West Kelowna and Kelowna and south to Summerland and Penticton.</div>
	<div>Connecting the Westside</div> <div>West Kelowna, Westbank First Nation and surrounding area residents rely heavily on Highway 97 for both local trips and access to regional destinations. Westside Road provides the only access to/from the region north on the west side of Okanagan Lake.</div> <div>Connecting across the lake</div> <div>The bridge has capacity out to 2040, however there are constraints at either end. Creativity is needed to increase the number of people that can cross the bridge easily and efficiently. Note: A second crossing is not within the scope of the Regional Transportation Plan.</div> <div>Connecting Kelowna (West)</div> <div>Regionally significant destinations in this area include downtown Kelowna, the Landmark Employment Centre, Kelowna General Hospital, Okanagan College and the Capital News Centre. How can we ensure reliable multi-modal access to and between these destinations?</div>



Connecting Our Region

Let's Talk Transportation!

What are your ideas for the following geographic areas?

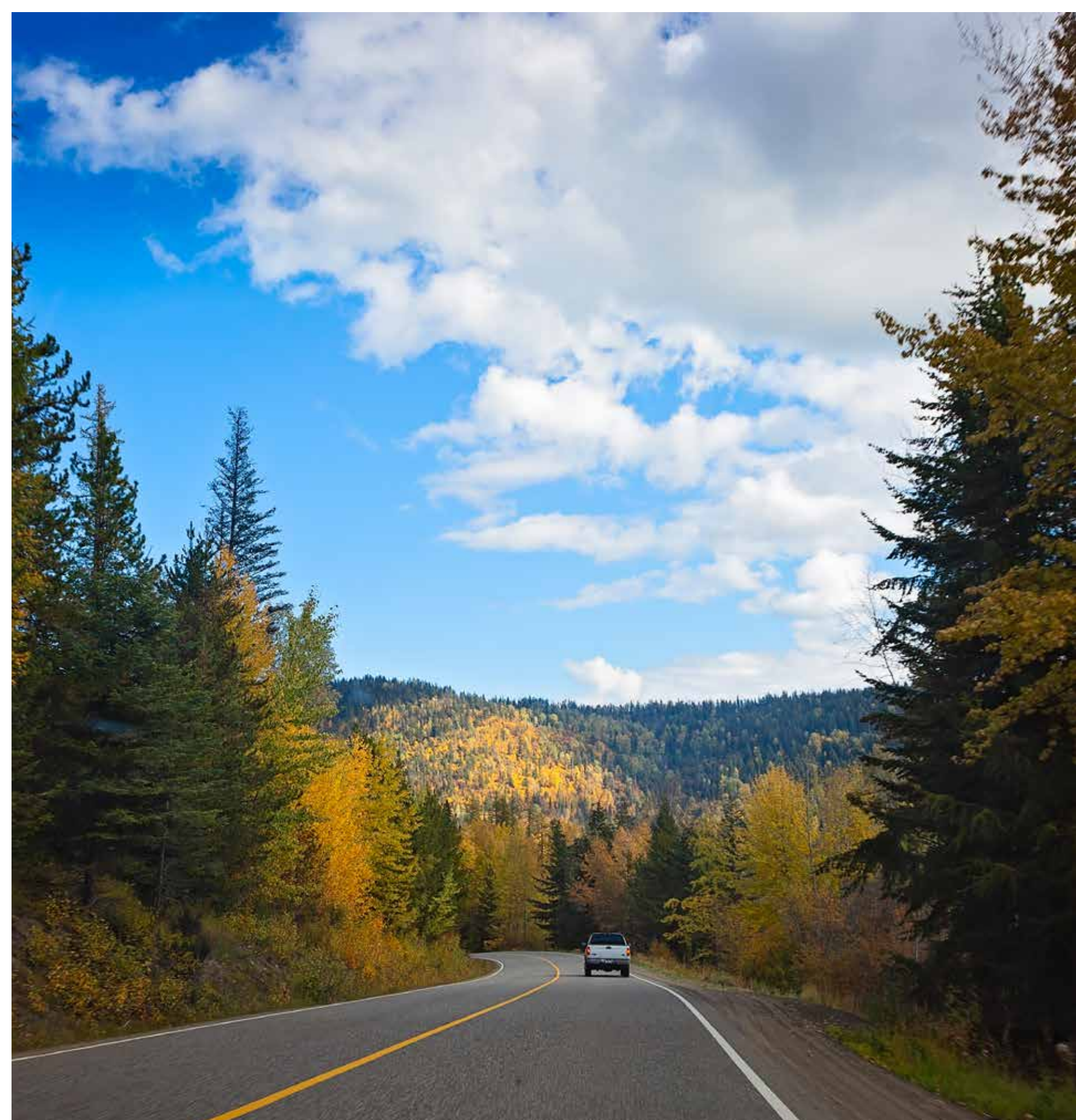
We want to hear about the projects, programs and policies you think will make the biggest difference for your quality of life, the economy and the environment.

What are your ideas for the following geographic areas?



Connecting Kelowna (East)

Regionally significant destinations on the east side of Kelowna include the University of British Columbia Okanagan and Kelowna International Airport. Topography and agricultural land create a pinch-point near Orchard Park Mall. Forecasts show travel demand will grow significantly in the next 20-25 years.



Connecting the Okanagan Gateway

The Okanagan Gateway is an important regional hub that includes the University of British Columbia, the Kelowna International Airport, the Airport Business Park and the Ellison, University South and Quail Ridge neighbourhoods and parts of Highway 97 and the Rail Trail.

Due to forecasted growth, there is a need to improve access both to and within the Gateway.

Connecting Lake Country and beyond

Lake Country residents need better connections to regional destinations to the south and north to Vernon.



Connecting Our Region

Let's Talk Transportation!

Thank you

for participating today!

Conversations at the event will help inform the Central Okanagan's first Regional Transportation Plan and the Okanagan Gateway Transportation Study.

The event is hosted by the Sustainable Transportation Partnership of the Central Okanagan (STPCO) in collaboration with the Okanagan Gateway Transportation Study partners.

Please don't forget to complete the survey and share it with your friends!

