

Flooding

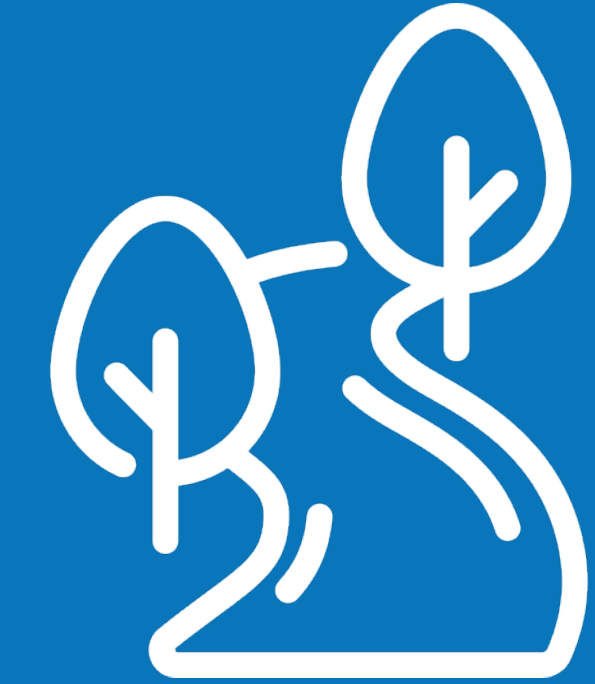
Climate change in Kelowna means:



More rain in winter, spring, and fall



Intense rainfall



Warmer springs affects creek flow

What are the impacts of flooding?

Frequent river flooding



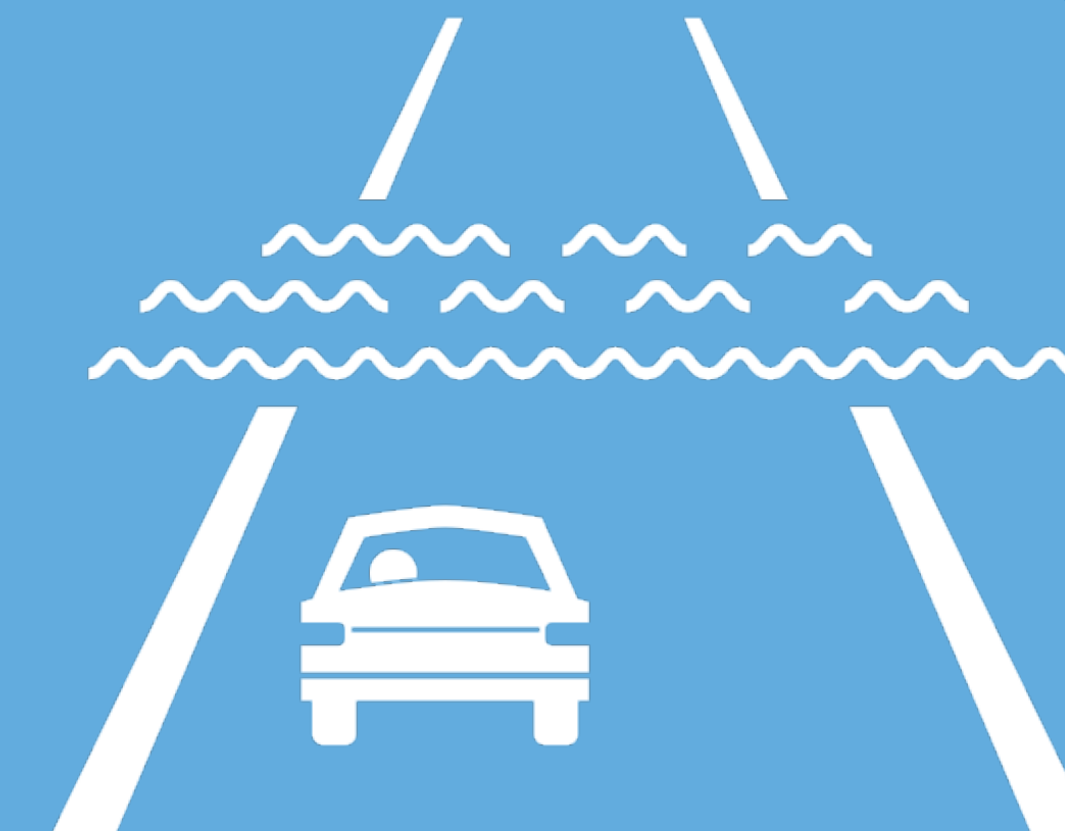
Reduced water quality and erosion



Damaged homes



Flooded streets, paths, and parks



Delayed planting and harvesting



Learn more: getinvolved.kelowna.ca/climatestrategy

Wildfire

Climate change in Kelowna means:



Longer fire season



Drier landscape, more fuel



Less summer rain, more extreme weather

What are the impacts of wildfire?

Poor air quality



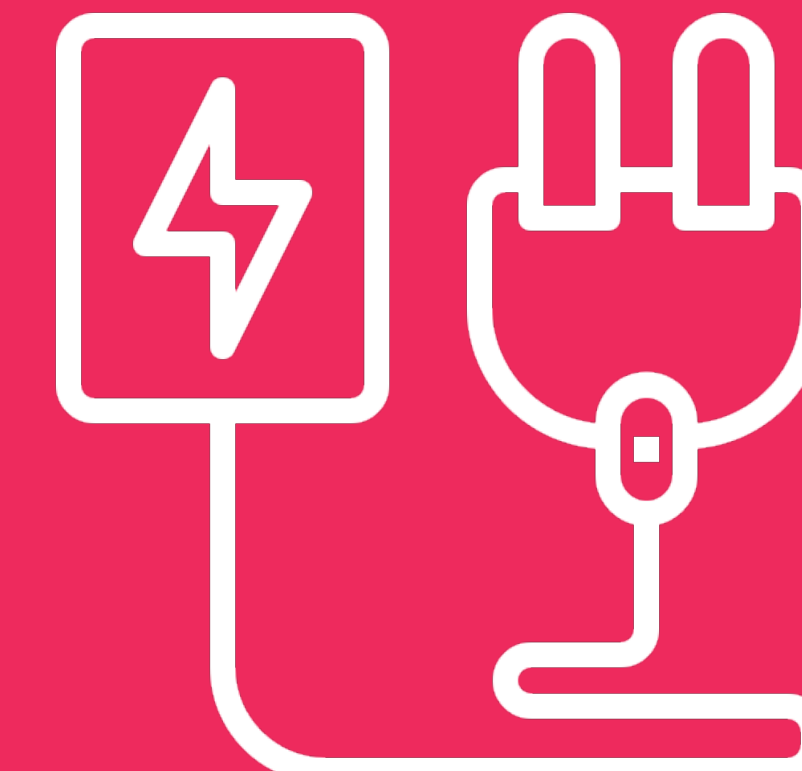
Damage or loss of buildings



Ecosystem and habitat loss



Electrical disruptions



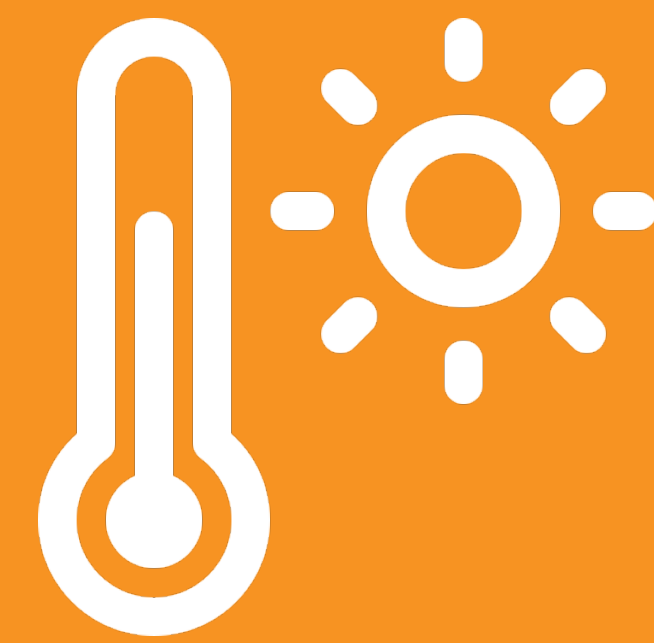
Transportation disruptions



Learn more: getinvolved.kelowna.ca/climatestrategy

Extreme Heat

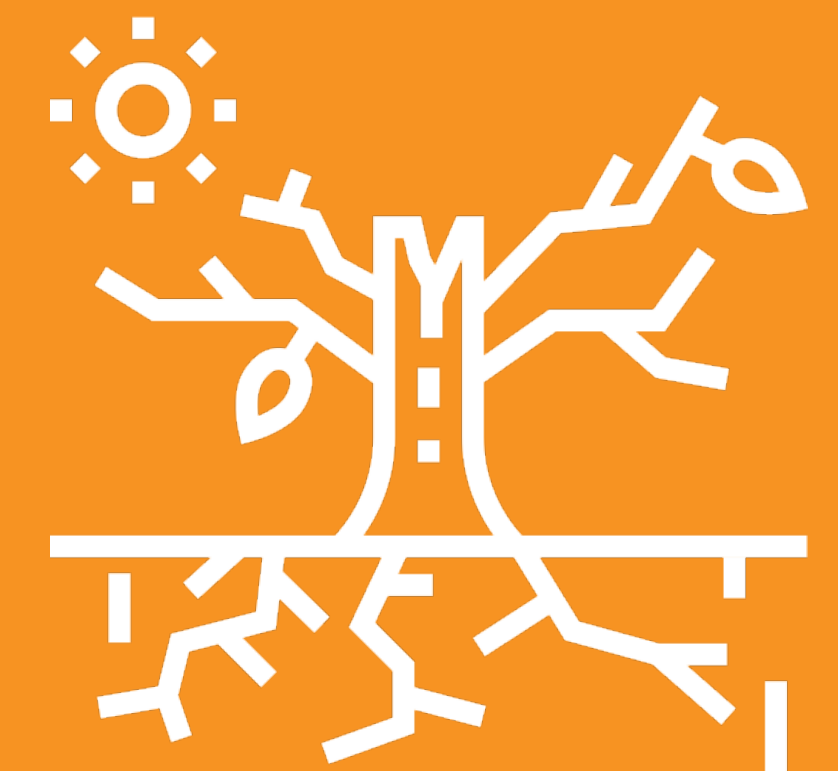
Climate change in Kelowna means:



More days
over 30°C



Hottest summer
days 7°C warmer



Warmer seasons &
Risk of drought

What are the impacts of extreme heat?

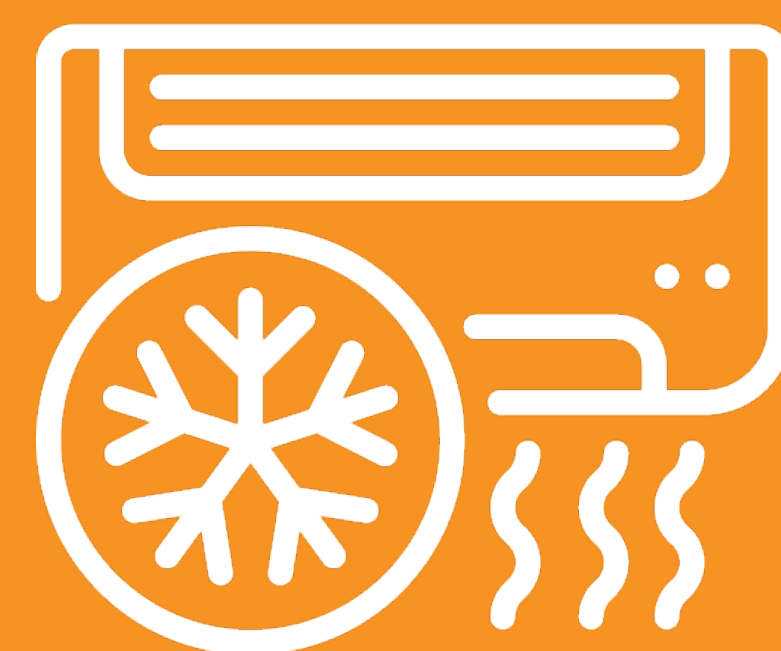
Dehydration,
heat exhaustion,
heat stroke



Stressed natural
and agricultural
areas



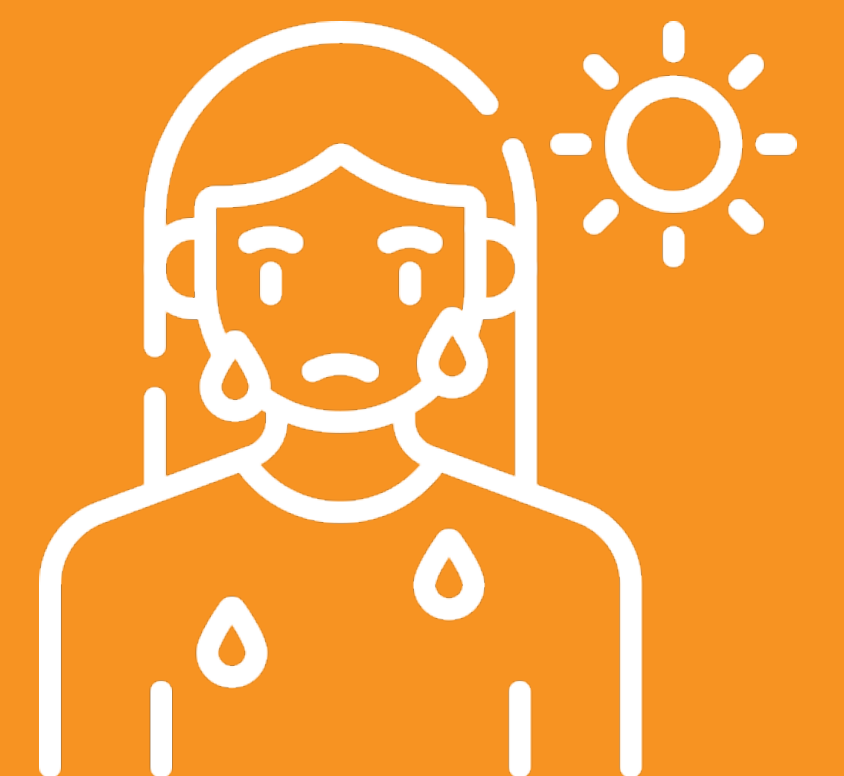
Increased
electricity use
for cooling



Poor air
quality



Unhealthy
outdoor
conditions



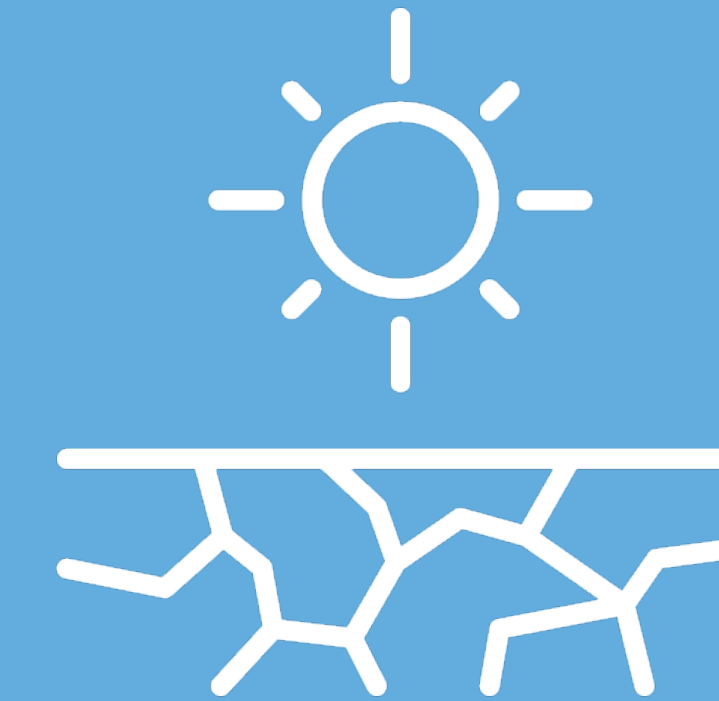
Learn more: getinvolved.kelowna.ca/climatestrategy

Water Security

Climate change in Kelowna means:



Less snowpack
Hotter, drier summers



Risk of
drought



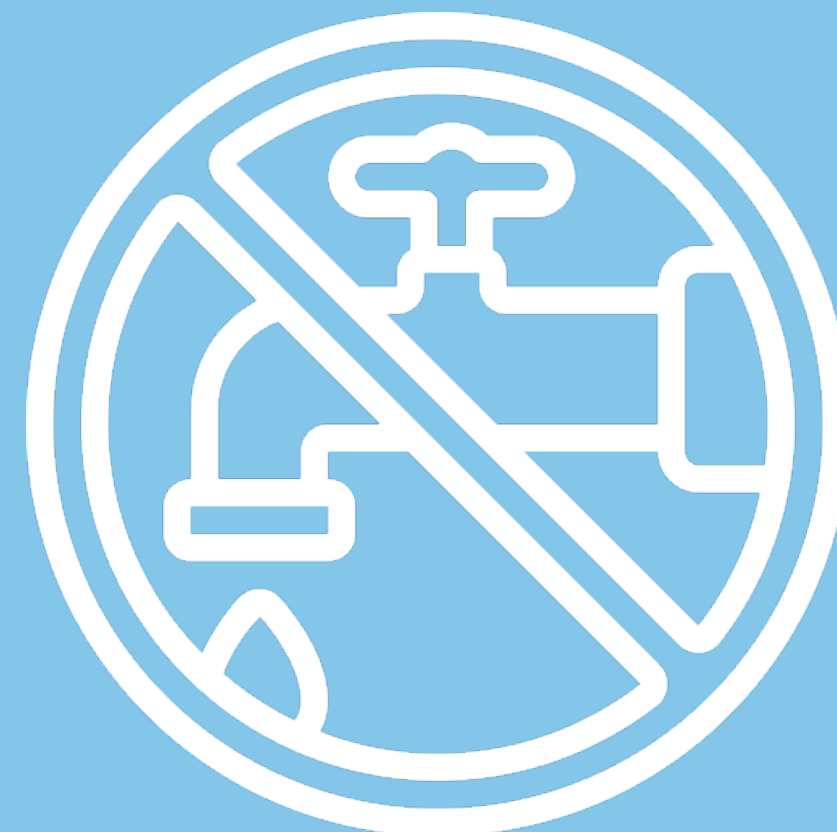
Longer growing
season

What are the impacts of reduced water security?

Competition
for water use



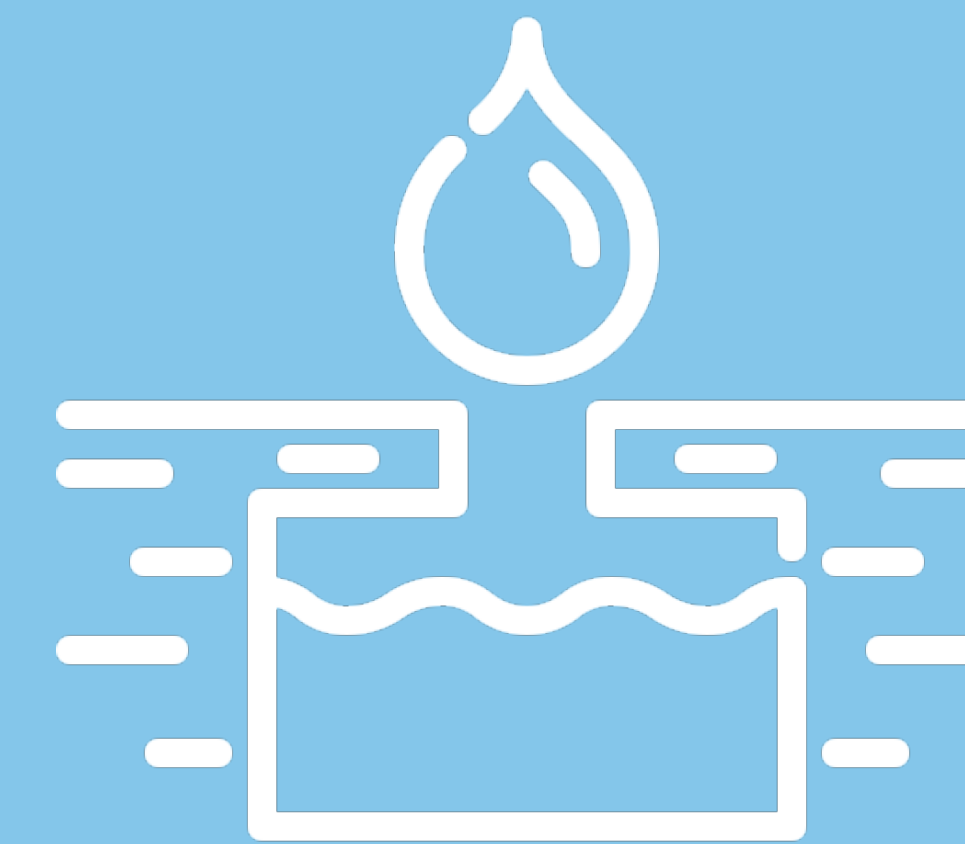
Water
restrictions



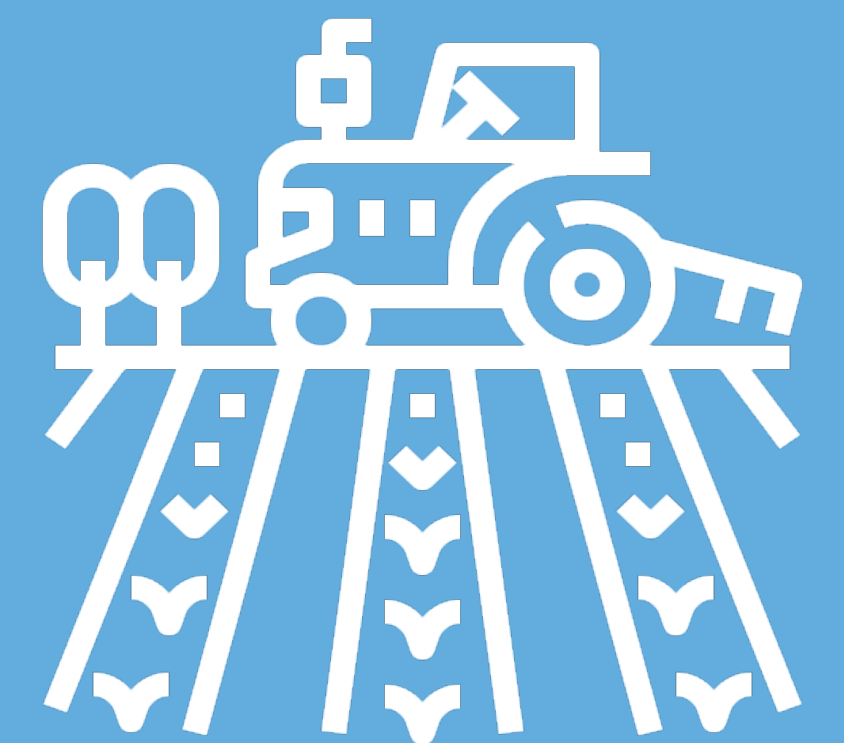
Stressed
ecosystems



Less groundwater
recharge



Agricultural
production
impacts



Learn more: getinvolved.kelowna.ca/climatestrategy