



Ballou Park upgrade and expansion

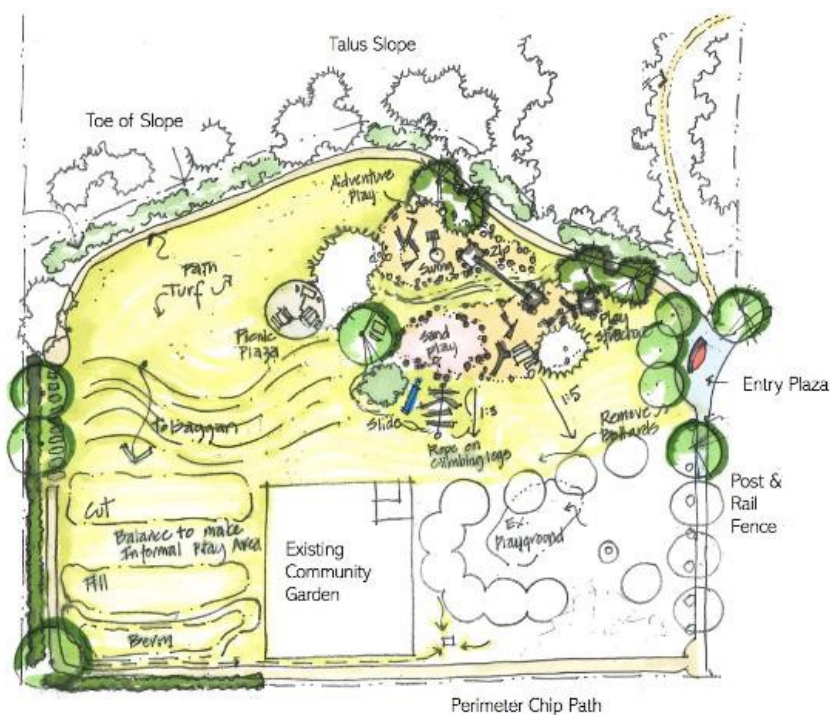
Public engagement report

July 2021

Project Overview

Ballou Neighbourhood Park is a 1.44 ha neighbourhood park on two legal parcels, located in the Glenmore neighbourhood of the city, at 1859 Ballou Road. Part of the park is developed (~0.3 ha), with a playground (currently for children ages 6-12) and a community garden; these facilities will remain. The remainder of the property is undeveloped and generally open, with east-facing slopes of 10-20 per cent. A slope on the property provides sledding opportunities in the winter.

Expansion of the park is anticipated in 2022 and a preliminary concept plan has been prepared for the park. The primary on-site improvements proposed for this project include an adventure playground, entry plaza, perimeter pathway and fencing, trail connection to Knox Mountain Park, site grading, irrigation, and landscaping.



Engagement Overview

The City is collecting input from residents to understand how they currently use Ballou Park and indicate preferences for how they'd like it to function in the future. Feedback was collected through an online engagement page outlining the proposed design and a survey. This engagement was open for four weeks between June 16 and July 11 and respondents were invited to share their thoughts through a combination of 16 open-ended and multiple-choice survey questions.

To promote the page, letters were sent to residences in the area, social media posts were published, and two public service announcements were distributed to media, emailed to more than 2,200 subscribers and posted on Kelowna.ca. Posters were hung in the park to let users know of the engagement opportunity and stakeholders including, Watson Road Elementary School and PAC, Central Okanagan Community Garden Association, and the Society of Hope.

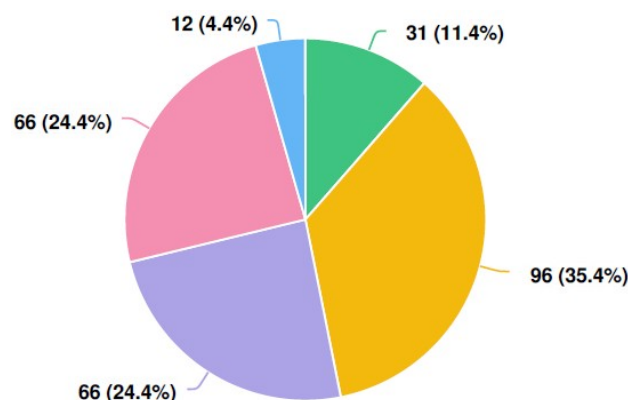
During the engagement period there was a total of 441 webpage visits to the get involved page, with 272 of those participating in the online survey.



Respondent demographics

Notification focused on reaching residents who already use the park and will use the park in the future. Over half of the respondents reside in Glenmore South and are between the ages of 25-44. Other respondents indicated they lived in Glenmore North, Downtown Kelowna and Other which consisted of Wilden, South Pandosy KLO and Rutland.

More than 70 per cent of visitors to Ballou Park indicated they visit the park monthly or more, with weekly visitors being the most common.



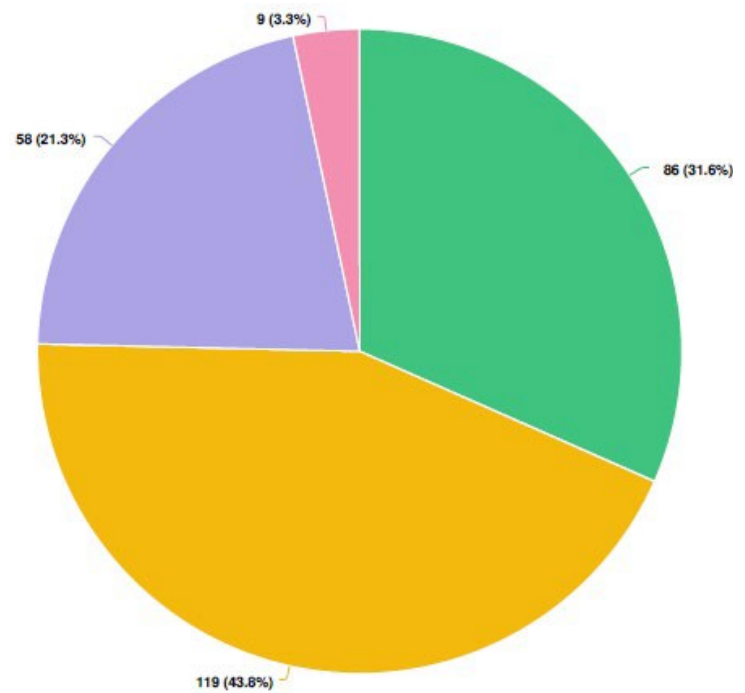
Frequency of park visits

● Daily ● Weekly ● Monthly ● Less than 10 times per year ● Never

What we heard

More than 75 per cent of respondents indicated they were in favour or very much in favour of the concept design proposed by the City. Overall comments included:

- "My children would definitely play there all the time if it was as proposed. Currently it's a very sad and uninviting park."
- "It's such a small park now, any upgrades would be amazing"
- "Any updated parks in our neighbourhood will be visited regularly by our two kids 5 and under."
- "Looks beautiful and fun! We would go there more often! Thanks for keeping the tobogganing hill! Thanks for improving the playground, it is a bit drab."

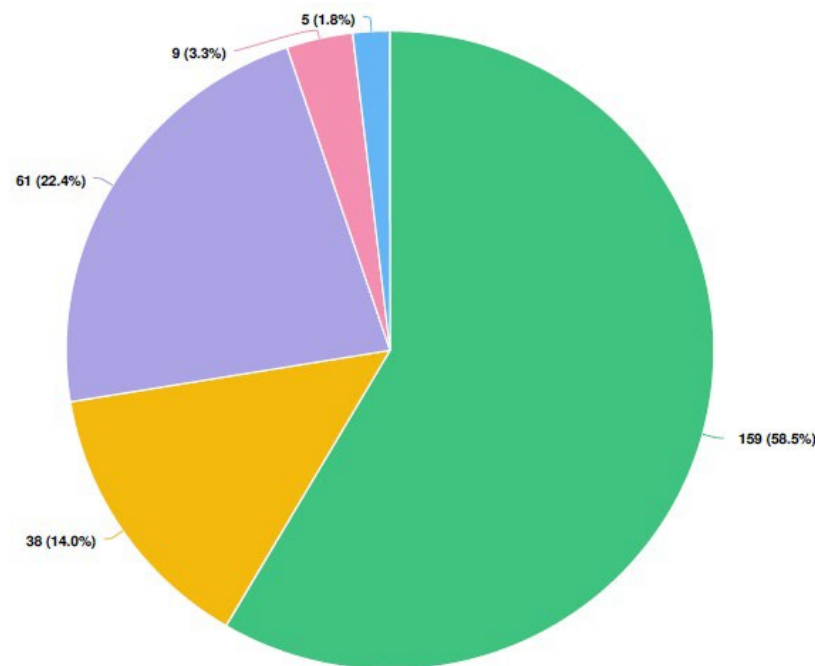


Favourability of proposed design

Very much in favour In favour Somewhat in favour Not in favour

The most common method of travelling to the park was walking at more than 58 per cent. Only 22.4 per cent drive, but several comments related to parking and transportation. Including:

- "There doesn't seem to be any more parking. Cars parallel parked at the side can be a hazard. There is no sidewalk on Moubray Rd heading down to the park."
- "I foresee severe parking issues especially during toboggan season no sidewalks on Yates or Moubray pending disaster"
- "Parking is not an issue right now. It may, however, become more of an issue when upgrades are made (particularly if an official hiking trail access point is included)."
- "There is currently low available parking for this park as it is and I am not sure how you will increase the parking given the scope of the proposed park. This will likely result in congestion for residents of the area."



Current methods of transportation to park

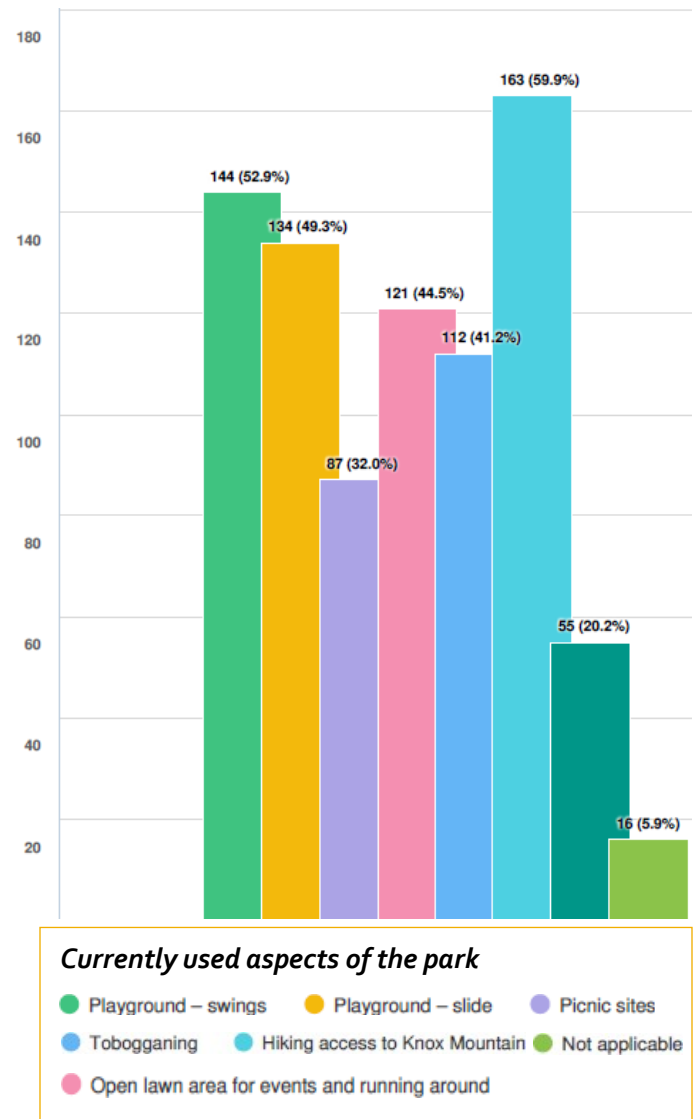
Walk Cycle Drive Not applicable Other (please specify)

Determining how the park is currently being used by those who visit will help determine which aspects to keep and/or improve upon. Respondents were asked to choose all applicable options with more than 79 per cent indicating that they visit the park to access Knox Mountain for hiking or mountain biking.

More than 101 per cent of responses indicated playground use as the second most prominent choice, with swings as the favorite activity.

A number of comments indicated concern about the activity options for different ages of children including:

- "Please include play structures for various age groups as it's hard to find parks that are toddler friendly"
- "Just want to make sure the equipment is toddler friendly, not using gravel as the playground space, and has nice shaded/tree"
- "It looks like it is geared towards older kids (5/6+). Making sure some areas are appropriate for toddler/preschool aged kids would be appreciated."
- "We need to consider all the older children in the area. Nothing here for them. Please consider a bike or skate park. Thank you!!"



Expansion of this park is intended to serve a growing neighbourhood. Survey respondents indicated that the upgrades most important to them included upgrades to the tobogganing hill (52.2%) and playground aspects like natural play materials such as wood and sand, and a climbing structure (tied at 50.7%).

Comments indicate that the toboggan hill is highly valued by respondents:

- "I appreciate the prioritization of the toboggan area as that is a much used and loved aspect of the park."
- "A zipline is a great idea as well as improvements to the toboggan area"
- "I like that the toboggan area will stay and be included."
- "The toboggan hill and formal connection to Knox trails are fantastic ideas."



Next Steps

The park construction is scheduled to begin Fall 2021 with anticipated completion in Summer 2022.

Respondent feedback in addition to design best practices, amenities elsewhere in the neighbourhood and existing policy guidance for neighbourhood level parks will inform the final design of the park expansion.

