

The North End Neighbourhood Plan

Leave your mark on the future of the North End

Nestled at the base of Knox Mountain, the North End is a unique neighbourhood rich with amenities that draw visitors near and far. It's also home to a mix of residential, recreational, industrial and commercial uses, and an emerging brewery district. What should the future of this area look like? The **North End Plan** will guide growth and redevelopment in the area over the next 20 years and beyond – and the City is seeking your input!

What's a neighbourhood plan?

A neighbourhood plan is a long-term plan that sets policy for land use and development, housing, parks and public spaces, infrastructure, and transportation solutions for a given area. These directions are implemented over time through civic investment and private sector development.

North End Plan project timeline (est.)



North End quick facts

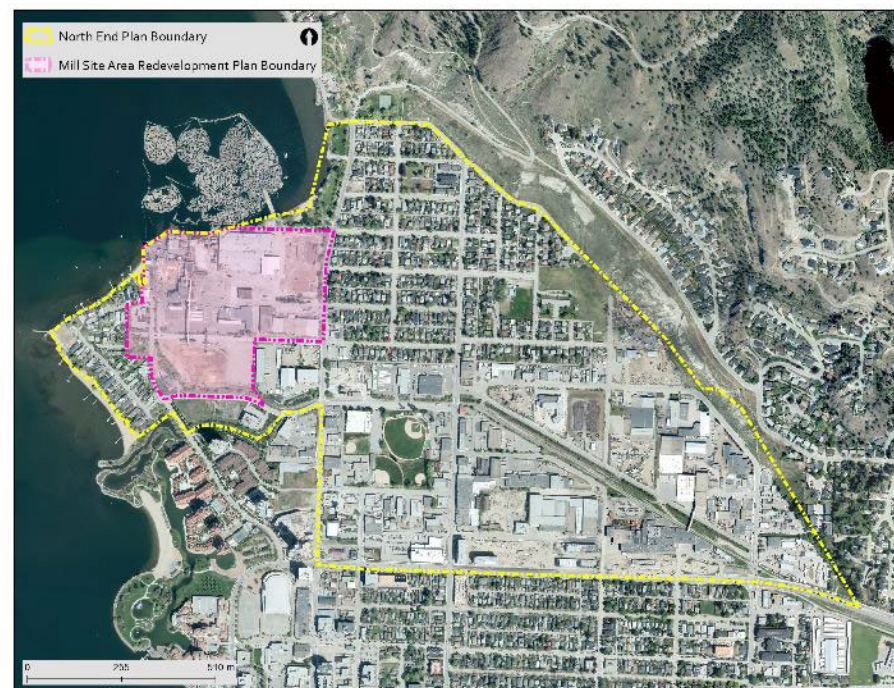
- ▶ **Population:** 1,565 residents
 - Residents tend to be younger and earn less than the Kelowna average
- ▶ **Business/employment**
 - The North End is home to 170 businesses employing approximately 3,300 people
 - In addition, nearly 80 home-based businesses operate in the North End
- ▶ **Housing**
 - Residents tend to live in smaller households and are more likely to rent
 - Over 95% of the North End's two residential neighbourhoods is composed of single and two dwelling housing – a far higher proportion than the city as a whole

What will be used to inform the North End Plan?

Public input, Council direction, and technical considerations are all vital inputs into the North End Plan. Additionally, existing policy documents – such as Imagine Kelowna, the 2040 Official Community Plan (OCP) and 2040 Transportation Master Plan (TMP) – will provide foundational guidance in the development of the plan.

What is the Mill Site Area Redevelopment Plan? What is its relationship to the North End Plan?

The North End Plan is being led by the City and will provide an overarching vision for the area. Owners of the former Tolko mill site are also undertaking a redevelopment process that explores what the future of this site might hold – as a large, waterfront site, the way it develops will undoubtedly have an impact on the future of this area and it is important for it to align with a vision for the neighbourhood as a whole. As a result, the North End Plan will guide the Mill Site Area Plan. Both processes are complementary but distinct and will follow similar timelines. They will both be shaped by robust community engagement with final plans subject to public review and Council approval. The table on the right shows how the two relate to one other (and to higher level plans).



How to get involved



- ▶ To shape the **City's North End Plan**, visit: getinvolved.kelowna.ca
- ▶ To shape the **Mill Site plan**, visit: kelownamillsite.ca

	Plan Level / Coverage	Detail	Engagement	Led by
City Plans (OCP/TMP)	Highest level: City-wide policy direction	**	City-wide	City
Neighbourhood Plan	Mid-Level: Neighbourhood-specific policy direction	***	City-wide + targeted	City
Area Plan	Lower-level: Site-specific development plan	****	Targeted	Owner/ Developer